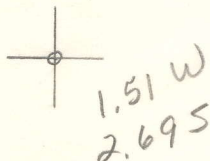


LATITUDE 38° 52' 30"

LONGITUDE 81° 17' 30"



7'5 OGIS topo location

7.5' loc	<u>2.69 S</u>	15' loc	<u>5.57 S</u>
	<u>1.51 W</u>	(calc.)	<u>3.75 W</u>

Company _____

Farm _____

Quad Spencer 7 1/2' 15' EC

County Roane

District Spencer

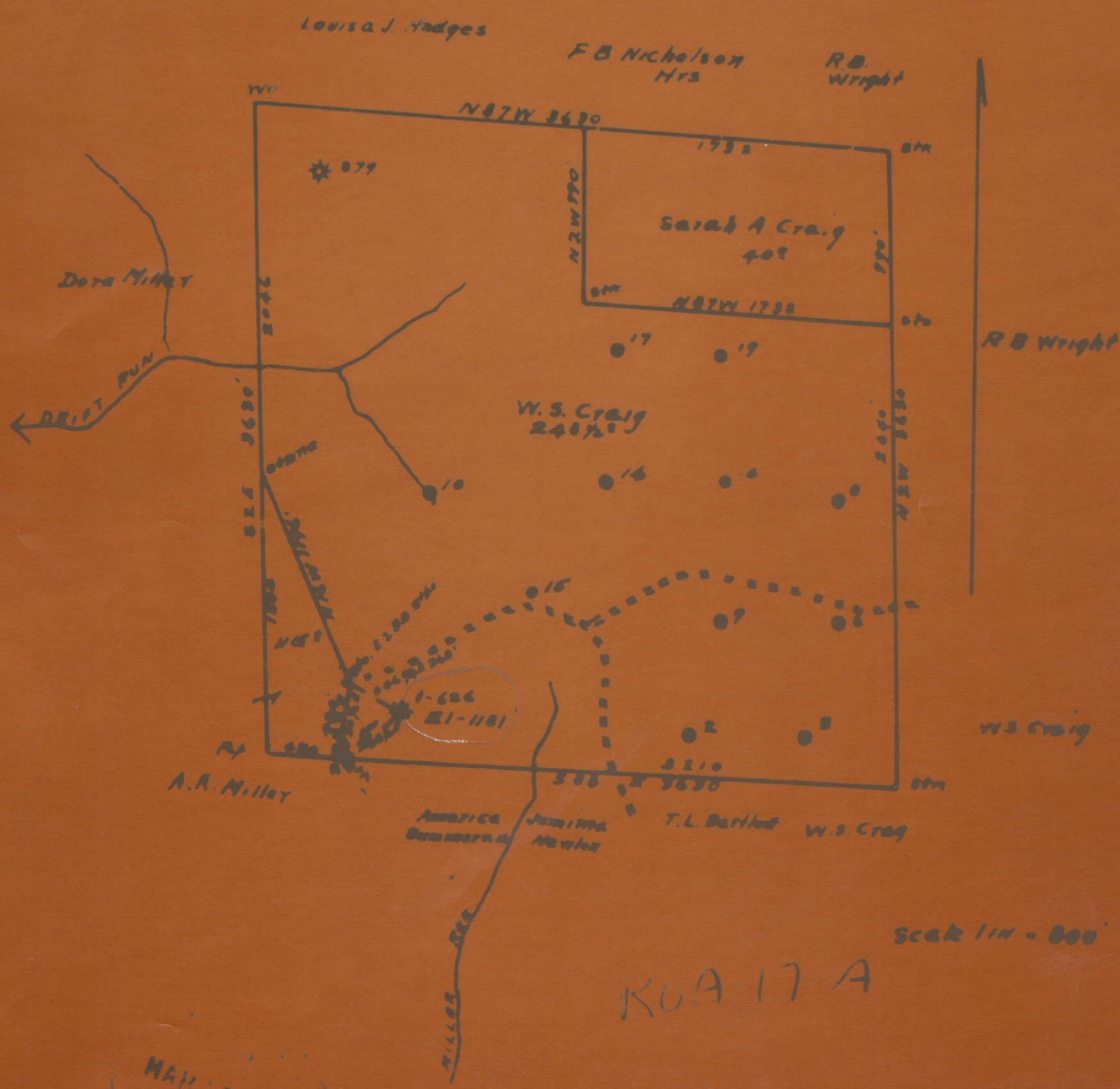
WELL LOCATION MAP

File No. 087-30017

Acknowledged before me this 3rd day of March, 1931.
My Commission expires on the 1st day of March, 1933.

Frank Fordham
Engineer

John F. Wiegman
Surveyor



MAR 1 1931
WEST

Spencer District, Roane County, W. Va.

By South Penn Oil Co., P. O. Drawer 1255, Pittsburgh, Pa.

On 248 $\frac{1}{2}$ acres, surface owned by Fred E. Craig, Reedy, W. Va., and

mineral rights by H. W. Craig, R. D. No. 3, Spencer, W. Va.

Elevation, 1181' L.

16' conductor; 10" casing, 1010'; 8 $\frac{1}{4}$ ", 1355'; 6-5/8", 2302'.

No coal was encountered.

Abandonment reported to Dept. of Mines March 9, 1931.

Well was not shot.

Salt water at 1390 and 1960-2118'.

Producing hole.

	Top.	Bottom.
Conductor	0	16
Sand	120	135
Red rock	135	170
Slate	170	260
Sand	260	300
Slate	300	395
Sand	395	455
Red rock	455	466
Lime	466	490
Red rock	490	560
Sand	560	580
Red rock	580	640
Lime	640	680
Slate	680	725
Pittsburgh Sand	725	755
Slate	755	800
Sand	800	827
Red rock	827	890
Lime	890	910
Slate and shell	910	960
Red rock	960	1000
Lime	1000	1020
Red rock	1020	1079
Sand	1079	1110
Slate and shells	1110	1200
Little Dunkard Sand	1200	1218
Red rock	1218	1240
Slate	1240	1328
Big Dunkard Sand (water, 1390')	1328	1415
Slate	1415	1430
Sand	1430	1535
Slate	1535	1555
Sand	1555	1630
Slate	1630	1685
Sand	1685	1740
Slate	1740	1790
Sand	1790	1850
Slate	1850	1950
Salt Sand (water, 1960-2118')	1950	2160
Little Lime	2160	2183
Pencil Cave	2183	2185
Big Lime	2185	2297
Big Injun Sand	2297	2317
Slate	2317	2340

(OVER)

	Top.	Bottom.
Lime	2340	2420
Slate and shells	2420	2500
Lime	2500	2570
Slate	2570	2722
Berea Grit (gas; 2730-2742'; oil, 2732-2742'), to bottom	2722	2742

Top.	Bottom.	
0	15	Conductor
15	15	Sand
15	15	Red rock
15	15	Slate
15	15	Sand
15	15	Slate
15	15	Sand
15	15	Red rock
15	15	Lime
15	15	Red rock
15	15	Sand
15	15	Red rock
15	15	Lime
15	15	Slate
15	15	Pittsburgh sand
15	15	Slate
15	15	Sand
15	15	Red rock
15	15	Lime
15	15	Slate and shell
15	15	Red rock
15	15	Lime
15	15	Red rock
15	15	Sand
15	15	Slate and shell
15	15	Little Duckard sand
15	15	Red rock
15	15	Slate
15	15	Big Duckard sand (water, 4390')
15	15	Slate
15	15	Sand
15	15	Slate
15	15	Sand
15	15	Slate
15	15	Sand
15	15	Slate
15	15	Sand
15	15	Slate
15	15	Salt sand (water, 180-218')
15	15	Little lime
15	15	Pencil cave
15	15	Big lime
15	15	Big lime sand
15	15	Slate

(OVER)

Spencer District, Roane County, W. Va.

By South Penn Oil Co., P. O. Drawer 1255, Pittsburgh, Pa.

On 248 $\frac{1}{2}$ acres, surface owned by Fred E. Craig, Reedy, W. Va., and mineral rights by H. W. Craig, R. D. No. 3, Spencer, W. Va.

Elevation, 1181' L.

16' conductor; 10" casing, 1010'; 8 $\frac{1}{4}$ ", 1355'; 6-5/8", 2302'.

No coal was encountered.

Abandonment reported to Dept. of Mines March 9, 1931.

Well was not shot.

Salt water at 1390 and 1960-2118'.

Producing hole.

	Top.	Bottom.
Conductor	0	16
Sand	120	135
Red rock	135	170
Slate	170	260
Sand	260	300
Slate	300	395
Sand	395	455
Red rock	455	466
Lime	466	490
Red rock	490	560
Sand	560	580
Red rock	580	640
Lime	640	680
Slate	680	725
Pittsburgh Sand	725	755
Slate	755	800
Sand	800	827
Red rock	827	890
Lime	890	910
Slate and shell	910	960
Red rock	960	1000
Lime	1000	1020
Red rock	1020	1079
Sand	1079	1110
Slate and shells	1110	1200
Little Dunkard Sand	1200	1218
Red rock	1218	1240
Slate	1240	1328
Big Dunkard Sand (water, 1390')	1328	1415
Slate	1415	1430
Sand	1430	1535
Slate	1535	1555
Sand	1555	1630
Slate	1630	1685
Sand	1685	1740
Slate	1740	1790
Sand	1790	1850
Slate	1850	1950
Salt Sand (water, 1960-2118')	1950	2160
Little Lime	2160	2183
Pencil Cave	2183	2185
Big Lime	2185	2297
Big Injun Sand	2297	2317
Slate	2317	2340

(OVER)

RCA-17-A

W. S. CRAIG NO. 1 WELL (Continued).

	Top.	Bottom.
Lime	2340	2420
Slate and shells	2420	2500
Lime	2500	2570
Slate	2570	2722
Berea Grit (gas, 2730-2742'; oil, 2732-2742'), to bottom		2722 - 2742

A-11
A-12

2742 - 2722	Slate
2722 - 2700	Slate
2700 - 2680	Slate
2680 - 2660	Slate
2660 - 2640	Slate
2640 - 2620	Slate
2620 - 2600	Slate
2600 - 2580	Slate
2580 - 2560	Slate
2560 - 2540	Slate
2540 - 2520	Slate
2520 - 2500	Slate
2500 - 2480	Slate
2480 - 2460	Slate
2460 - 2440	Slate
2440 - 2420	Slate
2420 - 2400	Slate
2400 - 2380	Slate
2380 - 2360	Slate
2360 - 2340	Slate
2340 - 2320	Slate
2320 - 2300	Slate
2300 - 2280	Slate
2280 - 2260	Slate
2260 - 2240	Slate
2240 - 2220	Slate
2220 - 2200	Slate
2200 - 2180	Slate
2180 - 2160	Slate
2160 - 2140	Slate
2140 - 2120	Slate
2120 - 2100	Slate
2100 - 2080	Slate
2080 - 2060	Slate
2060 - 2040	Slate
2040 - 2020	Slate
2020 - 2000	Slate
2000 - 1980	Slate
1980 - 1960	Slate
1960 - 1940	Slate
1940 - 1920	Slate
1920 - 1900	Slate
1900 - 1880	Slate
1880 - 1860	Slate
1860 - 1840	Slate
1840 - 1820	Slate
1820 - 1800	Slate
1800 - 1780	Slate
1780 - 1760	Slate
1760 - 1740	Slate
1740 - 1720	Slate
1720 - 1700	Slate
1700 - 1680	Slate
1680 - 1660	Slate
1660 - 1640	Slate
1640 - 1620	Slate
1620 - 1600	Slate
1600 - 1580	Slate
1580 - 1560	Slate
1560 - 1540	Slate
1540 - 1520	Slate
1520 - 1500	Slate
1500 - 1480	Slate
1480 - 1460	Slate
1460 - 1440	Slate
1440 - 1420	Slate
1420 - 1400	Slate
1400 - 1380	Slate
1380 - 1360	Slate
1360 - 1340	Slate
1340 - 1320	Slate
1320 - 1300	Slate
1300 - 1280	Slate
1280 - 1260	Slate
1260 - 1240	Slate
1240 - 1220	Slate
1220 - 1200	Slate
1200 - 1180	Slate
1180 - 1160	Slate
1160 - 1140	Slate
1140 - 1120	Slate
1120 - 1100	Slate
1100 - 1080	Slate
1080 - 1060	Slate
1060 - 1040	Slate
1040 - 1020	Slate
1020 - 1000	Slate
1000 - 980	Slate
980 - 960	Slate
960 - 940	Slate
940 - 920	Slate
920 - 900	Slate
900 - 880	Slate
880 - 860	Slate
860 - 840	Slate
840 - 820	Slate
820 - 800	Slate
800 - 780	Slate
780 - 760	Slate
760 - 740	Slate
740 - 720	Slate
720 - 700	Slate
700 - 680	Slate
680 - 660	Slate
660 - 640	Slate
640 - 620	Slate
620 - 600	Slate
600 - 580	Slate
580 - 560	Slate
560 - 540	Slate
540 - 520	Slate
520 - 500	Slate
500 - 480	Slate
480 - 460	Slate
460 - 440	Slate
440 - 420	Slate
420 - 400	Slate
400 - 380	Slate
380 - 360	Slate
360 - 340	Slate
340 - 320	Slate
320 - 300	Slate
300 - 280	Slate
280 - 260	Slate
260 - 240	Slate
240 - 220	Slate
220 - 200	Slate
200 - 180	Slate
180 - 160	Slate
160 - 140	Slate
140 - 120	Slate
120 - 100	Slate
100 - 80	Slate
80 - 60	Slate
60 - 40	Slate
40 - 20	Slate
20 - 0	Slate