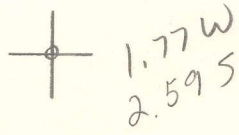


LATITUDE 38°52'30"

LONGITUDE 00°51'18"



7'5 OGIS topo location

7.5' loc \_\_\_\_\_ 15' loc \_\_\_\_\_  
 \_\_\_\_\_ (calc.) \_\_\_\_\_

Company \_\_\_\_\_

Farm \_\_\_\_\_

Quad Spencer 7 1/2'

County Roane

District Spencer

WELL LOCATION MAP

File No. 087-73A

JOHN MILLS & SONS

Lease No.

Spencer

Well Order No.

PLAT OF THE LOCATION OF WELL No. 1

being Well No. 1

J. M. GARPASEL

Tract of 40 1/2 acres

Located in

SPENCER

State,

ROADS

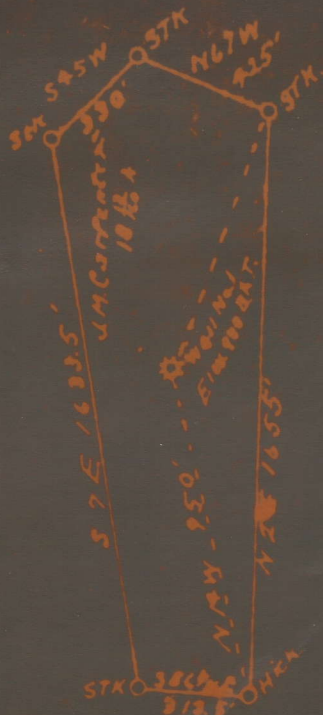
County

Edith Marple



J. M. GARPASEL

ROY G. HILDRETH



Roy G. Hildreth

see microfilm for Plot

J. M. CARPENTER NO. 1 WELL.

Spencer District, Roane County, W. Va.  
By Spencer Oil & Gas Co.  
On 54-3/16 acres.  
Keller Map I-22.  
Elevation..... 900' (see Plot)  
Completed Nov. 29, 1921.  
Gas well. 460,000 cu. ft. Big Injun Sand. (S. P.)  
From Heck's notes.

TD = 2080

ROA-73-A  
7

(~~ROA-73-A~~)

No well record on microfilm just some notes