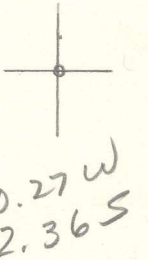


LATITUDE 38°50'00"

LONGITUDE 81°22'30"



7'5 OGIS topo location

7.5' loc \_\_\_\_\_ 15' loc \_\_\_\_\_  
 \_\_\_\_\_ (calc.) \_\_\_\_\_

Company \_\_\_\_\_

Farm \_\_\_\_\_

Quad Peniel 7 1/2'

County Roane

District Spencer

WELL LOCATION MAP

File No. 087-1034

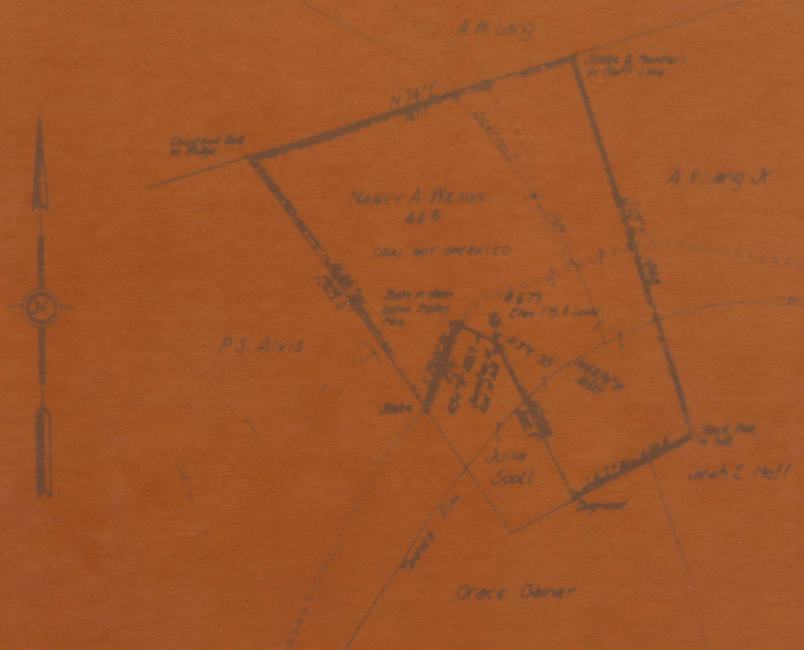
I, the undersigned, hereby certify that this map is correct and shows all the information to the best of my knowledge and belief, required by the Oil and Gas Section of the Mining Laws of West Virginia.

*E. A. Cunningham*  
Engineer

Acknowledged before me, a Notary Public of Kanawha County, W. Va.

this 18<sup>th</sup> day of January 1935.

My Commission expires May 2, 1940.



Nancy A. Wilson  
Well No 679  
Spencer District  
Roane County, W. Va.  
Jan. 18, 1935.

UNITED FUEL GAS CO.  
MAP SHOWING  
WELL TO BE ABANDONED  
SCALE - 1 INCH = 660 FEET

4 19 1935

See microfilm for Plot

NANCY A. WILSON NO. 679 WELL.

No. 130 O.F.-Roane.

Spencer District, Roane County, W. Va.

By United Fuel Gas Co., Charleston, W. Va.

On 4<sup>1</sup>/<sub>2</sub> acres, surface and mineral rights owned by Nancy A. Wilson, Spencer, W. Va.

Drilled previous to June 1, 1929.

Elevation, 775.8' L.

13" conductor, 16'; 6-5/8" casing, 1894' 6".

Bottom hole packer, 6-5/8, set at 1894' 6".

Anchor packer, 2 x 5-3/16, set at 1944'.

Casing perforated at 2416 and 2394'.

No coal was encountered.

Abandonment reported to Dept. of Mines Jan. 18, 1935.

Well was shot; norrecord.

Gas well.

(Scaffold Run)  
Turner Run

ROA-103-A

	Top.	Bottom.	Thickness.
1st Pittsburgh Sand	380	- 400	20
2nd Pittsburgh Sand	550	- 590	40
Little Dunkard and	960	- 1060	100
Big Dunkard Sand	1070	- 1135	65
Gas Sand	1213	- 1315	102
Salt Sand	1550	- 1878	328
Big Lime	1878	- 1990	112
Big Injun Sand	1990	- 2005	15
Berea sand (gas, 2378'; gas increased, 2383')	2372	- 2388	16
Total depth			2437