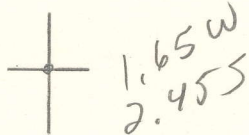


LATITUDE 38° 57' 30"

LONGITUDE 81° 57' 30"



7.5 OGIS topo location

7.5' loc \_\_\_\_\_ 15' loc \_\_\_\_\_  
 \_\_\_\_\_ (calc.) \_\_\_\_\_

Company \_\_\_\_\_

Farm \_\_\_\_\_

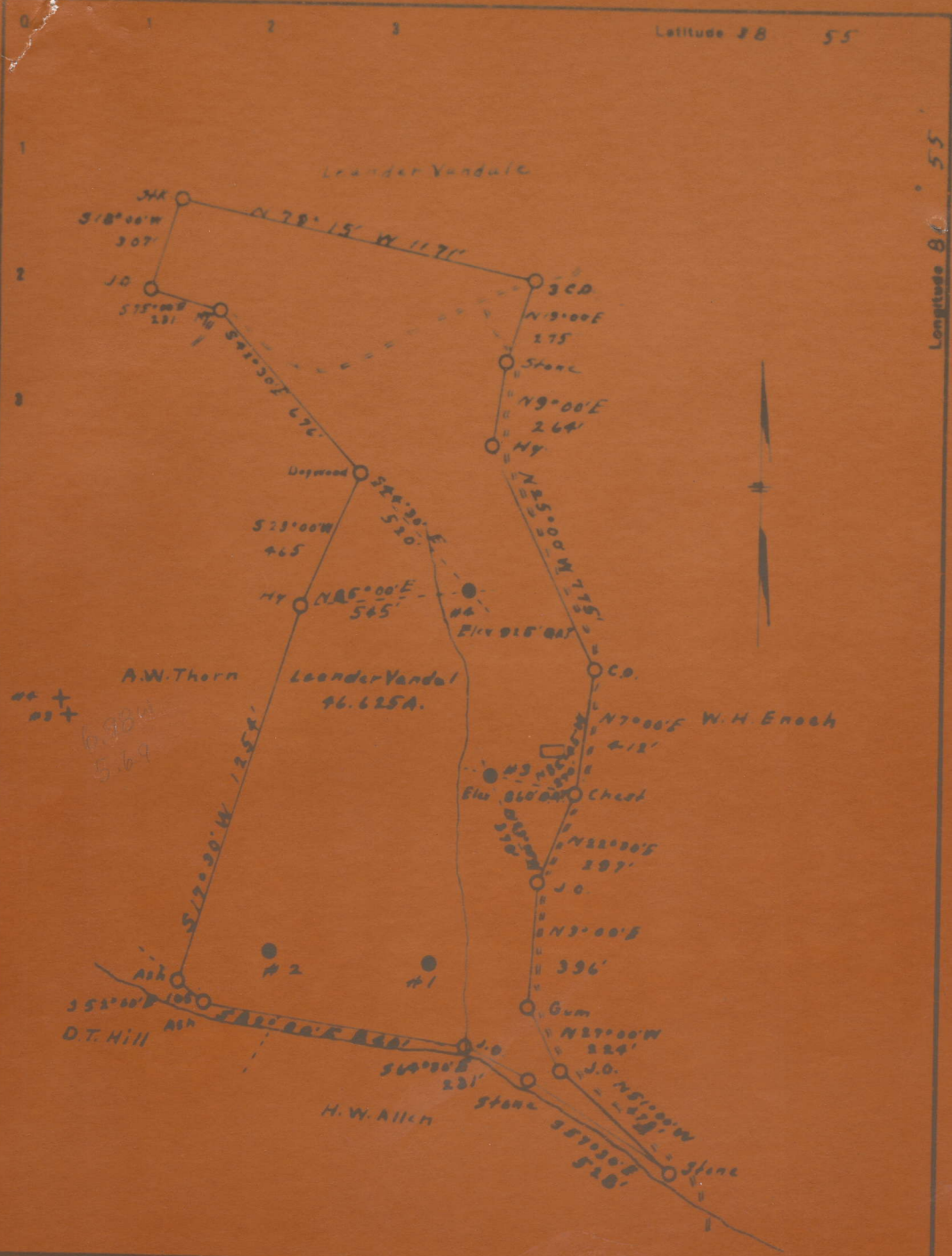
Quad Reedy 7 1/2

County Roane

District Reedy

WELL LOCATION MAP

File No. 087-137A



Company H.E. MILLIKEN  
 Address Waynesburg, Pa.  
 Farm Laander Vandal

STATE OF WEST VIRGINIA  
 DEPARTMENT OF MINES  
 OIL AND GAS DIVISION

---

VANDALE, LEANDER, NO. 1197.

Roa-137-A.

By H. E. Milliken.

Reedy Dist.

See microfilm for  
Plat

Well record hard to read

---