

LATITUDE 38° 55'

LONGITUDE 91° 18'

4.05W
4.74S

7.5 OGIS topo location

7.5' loc _____ 15' loc _____
 (calc.) _____

Company _____

Farm _____

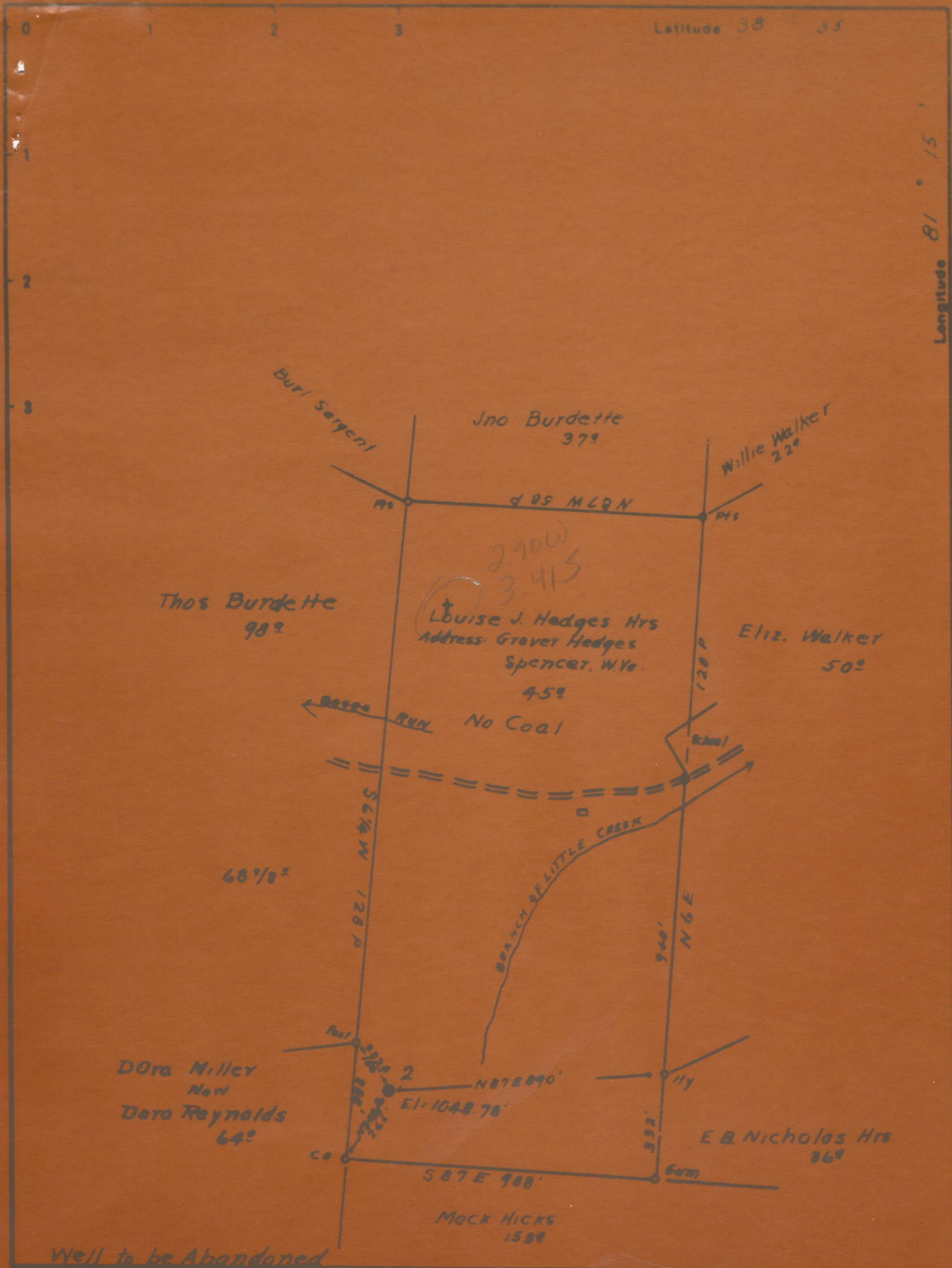
Quad Spencer 15' (EC)

County Roane

District Spencer

WELL LOCATION MAP

File No. 087-147A



Well to be Abandoned

Company South Penn Oil Co
 Address 211 7th Ave Pittsburgh, Pa
 Form L. J. Hedges

STATE OF WEST VIRGINIA
 DEPARTMENT OF MINES
 OIL AND GAS DIVISION
 CHARLESTON

147A

Spencer District, Roane County, W. Va.
 By South Penn Oil Co., G. of C. Bldg., Pittsburgh, Pa.
 On 45 acres, on Spring Creek, surface and mineral rights owned
 by Heirs of L. J. Hedges, % Grover Hedges, Spencer, W. Va.
 Well was completed, Nov. 24, 1916.
 Shot, April 13, 1920, in Big Injun Sand.
 Open flow, 4.5/10ths water in 6-5/8" opening.
 Oil, 1 1/2 bbl. after shot in Injun.
 No coal was encountered.
 Oil well.

see microfilm
for Plot

	Top.	Bottom.
Big Line	2065	- 2170
Big Injun Sand	2212	
Berea Sand (oil and gas, 2597-2618')	2589	- 2618
Total depth		2619
Filled back, April, 1920, to, present T. D.		2229

Above is only well record available.

149

WEST VIRGINIA DEPARTMENT OF MINES
OIL AND GAS DIVISION

WELL RECORD

Permit No. **ROA-147-A**

Oil or Gas Well **OIL**
(Kind)

Company **SOUTH PENN OIL COMPANY**
 Address **C.of C.Bldg.Pittsburgh, Pa.**
 Farm **L.J.& A.O.Hedges** Acres **45**
 Location (waters) **Spring Creek**
 Well No. **2** Elev. **1048.78'**
 District **Spencer** County **Roane**
 The surface of tract is owned in fee by **Hrs.L.J.Hedges**
c/o Grover Hedges Address **Spencer, W.Va.**
 Mineral rights are owned by **Hrs.L.J.Hedges,**
c/o Grover Hedges Address **Spencer, W.Va.**
 Drilling commenced **Nov. 24, 1916**
 Drilling completed **Apr. 13-1920**
 Date shot **Apr. 13-1920** Depth of shot **B.Injun**
 Open Flow **4/5** /10ths Water in **6-5/8" open** Inch
 /10ths Merc. in Inch
 Volume **916,000** Cu. Ft.
 Rock Pressure lbs. hrs.
 Oil **1 1/2 Bbl.after shot in Injun** bbls., 1st 24 hrs.
 Fresh water feet feet
 Salt water feet feet

Casing and Tubing	Used in Drilling	Left in Well	Packers
Size			Kind of Packer
16			
13			
10	930 (Pulled)		Size of
8 1/4	1260 (Pulled)		
6 5/8	2145	2145	Depth set
5 3/16			
3			Perf. top
2			Perf. bottom
Liners Used			Perf. top
			Perf. bottom

CASING CEMENTED SIZE No. FT. Date
NO COAL
 COAL WAS ENCOUNTERED AT FEET INCHES
 FEET INCHES FEET INCHES
 FEET INCHES FEET INCHES

Formation	Color	Hard or Soft	Top	Bottom	Oil Gas or Water	Depth Found	Remarks
Big Lime			2065	2170			
Big Injun			2212				
Berea			2589	2618			
Total Depth				2619			
Filled back 2229', April, 1920.							
Present Total Depth				2229			
Above is only well record available.							



