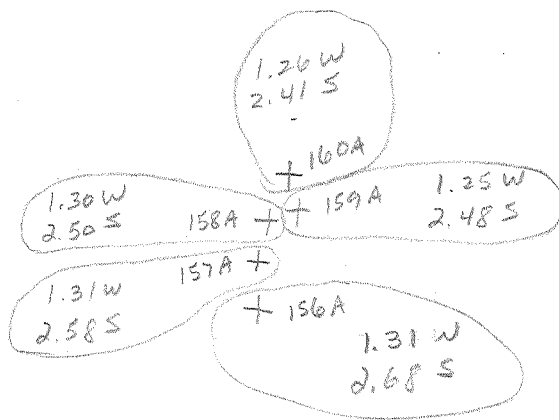


LATITUDE 38°57'30"

LONGITUDE 81°45'18"



7.5 OGIS topo location

7.5' loc _____ 15' loc _____
 (calc.) _____

Company H.E. Milliken

Farm H.F. Enoch

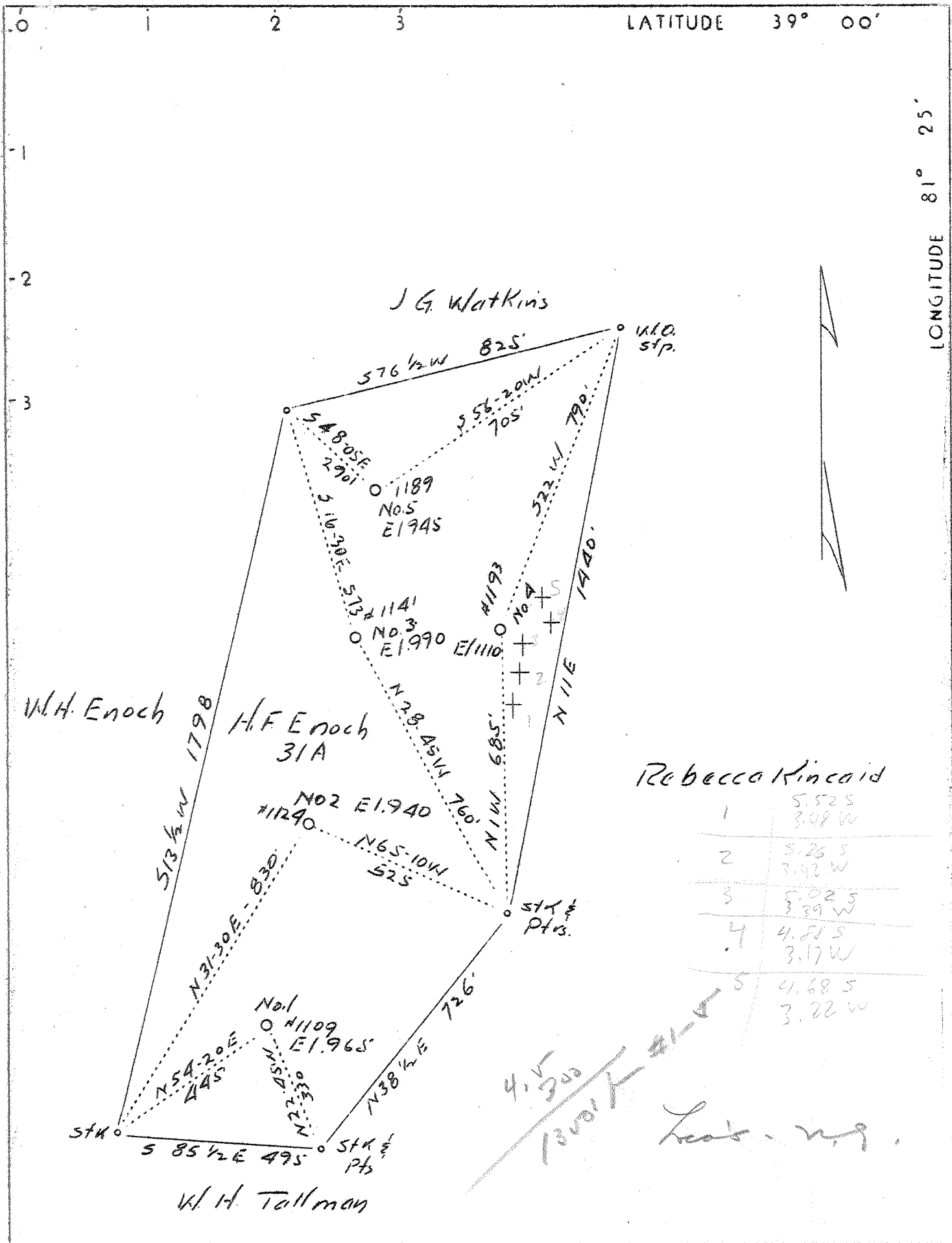
Quad Reedy 7 1/2'

County Roane

District Reedy

WELL LOCATION MAP

File No. 087-156A → 160A



Company H. E. Milliken. 3657
 Address Waynesburg, Pa.
 Farm H. F. Enoch
 Tract 31 Acres Lease No. _____
 Well (Farm) Nos. 1, 2, 3, 4, 5 Serial# 1109-1124-1193-1141-1189
 Elevation (Spirit Level) 965, 940, 1110, 990, 945
 Quadrangle Hoyt S. W. Spencer NW
 County Roane District Reedy 4
 Engineer L. F. Dye
 Engineer's Registration No. 804
 File No. _____ Drawing No. _____
 Date 4-7-37 Scale 1" = 300'

STATE OF WEST VIRGINIA
 Department of Mines
 OIL AND GAS DIVISION
 Charleston

156 & 157 No well record on microfilm
 WELL LOCATION MAP
 see microfilm for File No. ROA-156-160A
 158, 159, 160 well record INCLUDING
 + Denotes location of well on U. S. Topographic Maps, scale 1 to 62,500 latitude and longitude lines being represented by border lines as shown
 - Denotes one inch spaces on border line of original tracing.