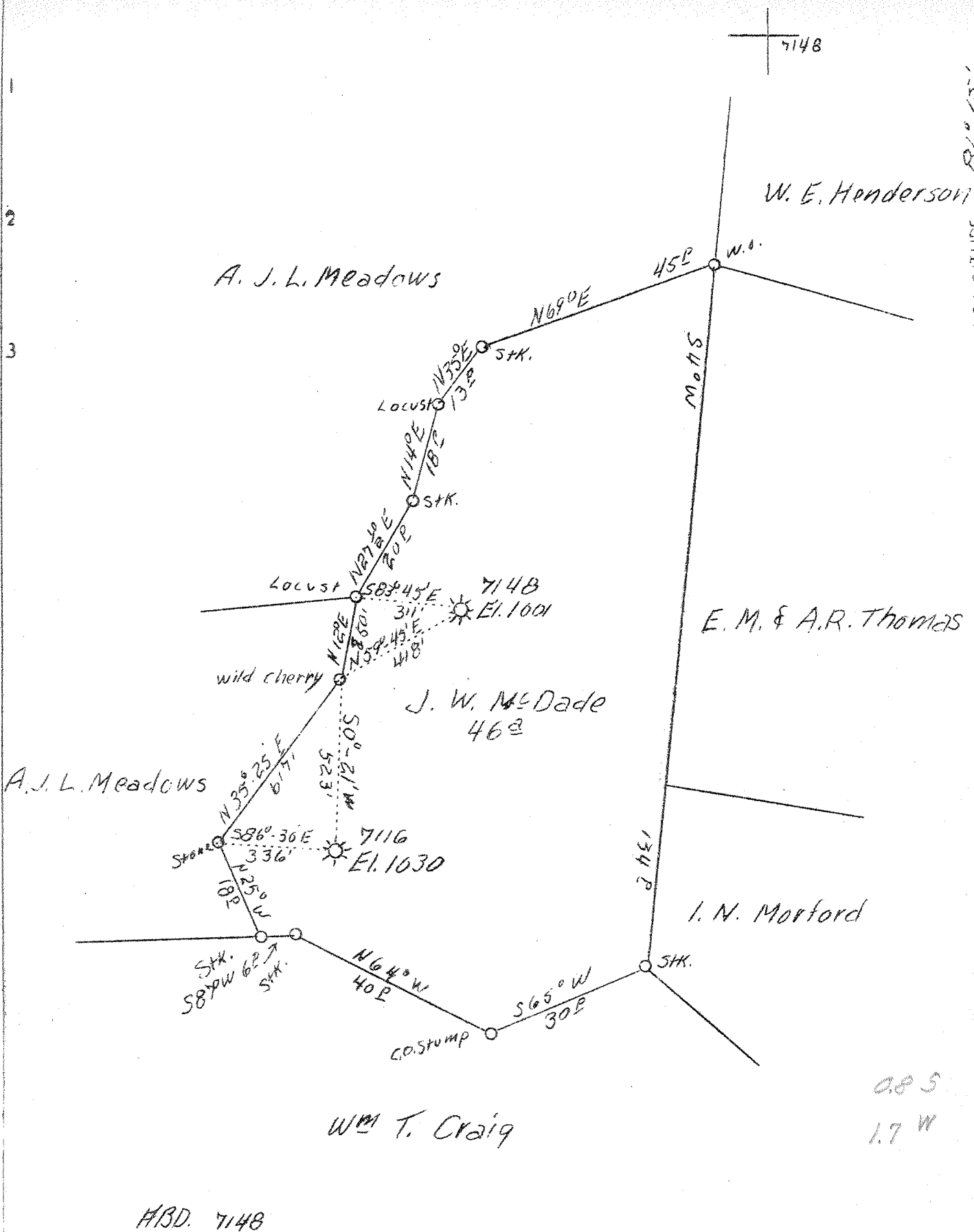


1 2 3

LATITUDE 38° 45'

LONGITUDE 81° 15'



085  
1.7 W

ABD. 7148

Company Hope Natural Gas Co.  
 Address Clinton, W. Va.  
 Name J. W. McDade  
 Acres 40  
 Loc. No. 4200  
 Serial No. 7116 & 7148  
 Elevation (Spirit Level) 1030 & 1001  
 Quadrangle Shenandoah N. E.  
 County Roanoke  
 District Shenandoah  
 Engineer J. A. B. [unclear]  
 Engineer's Record Book No. 900  
 Date May 19, 1928  
 Scale 1" = 400'

Shenandoah Nat. Gas Co.  
 1001  
 1030  
 1001

File No. Roa-193-A

Reference to plan of Roll of U.S. Topographic Maps, scale 1" to 32,000 latitude and longitude lines will be indicated by border lines of same - denotes end of space on line or right of cut.

193A

Spencer District, Roane County, W. Va.

By Hope Natural Gas Co., Clarksburg, W. Va.

On 46 acres.

Elevation, 1001' L.

Drilling commenced Sept. 29, 1925; completed, Nov. 19, 1925.

Well was not shot.

No water recorded.

3 1/2" casing, 535'; 6" , 1183' (pulled); 5" , 2074'; 2" tubing, 2220'  
(pulled). Casing not cemented.

No coal was encountered.

Gas well. Abandonment reported to Dept. of Mines July 20, 1938.

Record to ROT from Mrs. Griffith August 12, 1938.

	Top.	Bottom.
Sand	645	- 790
Red rock cave	790	- 1060
First Cow Run Sand	1060	- 1080
Second Cow Run Sand	1125	- 1200
Salt Sand	1785	- 1917
Big Lime	1990	- 2141
Big Injun Sand (show oil, 2160'; gas, 2196-2204')	2141	- 2210
Total depth		2221

WEST VIRGINIA DEPARTMENT OF MINES  
OIL AND GAS DIVISION

WELL RECORD

186

Permit No. ....

Oil or Gas Well Gas  
(Kind)

Company Hope Natural Gas Company  
 Address Clarksburg, W. Va.  
 Farm J. W. McDade Acres 46  
 Location (waters) .....  
 Well No. 7148 Elev. 1001  
 District Spencer County Roane  
 The surface of tract is owned in fee by .....  
 Address .....  
 Mineral rights are owned by .....  
 Address .....  
 Drilling commenced 9-29-1925  
 Drilling completed 11-19-1925  
 Date shot Not shot Depth of shot .....  
 Open Flow /10ths Water in ..... Inch  
 /10ths Merc. in ..... Inch  
 Volume ..... Cu. Ft.  
 Rock Pressure ..... lbs. .... hrs.  
 Oil ..... bbls., 1st 24 hrs.  
 Fresh water None recorded feet ..... feet  
 Salt water None recorded feet ..... feet

Casing and Tubing	Used in Drilling	Left in Well	Packers
Size			Kind of Packer
16			
13			
10			Size of
8 1/4	835	835	
6 5/8	1183	Pulled	Depth set
5 3/16	2074	2074	
3			Perf. top
2	2220	Pulled	Perf. bottom
Liners Used			Perf. top
			Perf. bottom

CASING CEMENTED ..... SIZE ..... No. FT. .... Date  
Not cemented  
 COAL WAS ENCOUNTERED AT ..... FEET ..... INCHES  
 ..... FEET No. coal INCHES ..... FEET ..... INCHES  
 ..... FEET ..... INCHES ..... FEET ..... INCHES

Formation	Color	Hard or Soft	Top	Bottom	Oil Gas or Water	Depth Found	Remarks
Sand			645	790			
Red Rock Cave			790	1060			
First Cow Run Sand			1060	1080			
second Cow Run Sand			1125	1200			
salt Sand			1765	1917			
Big Lime			1990	2141			
Big Injun Sand			2141	2210	show oil Gas	2160 2196-2204	
Total Depth				2221			

