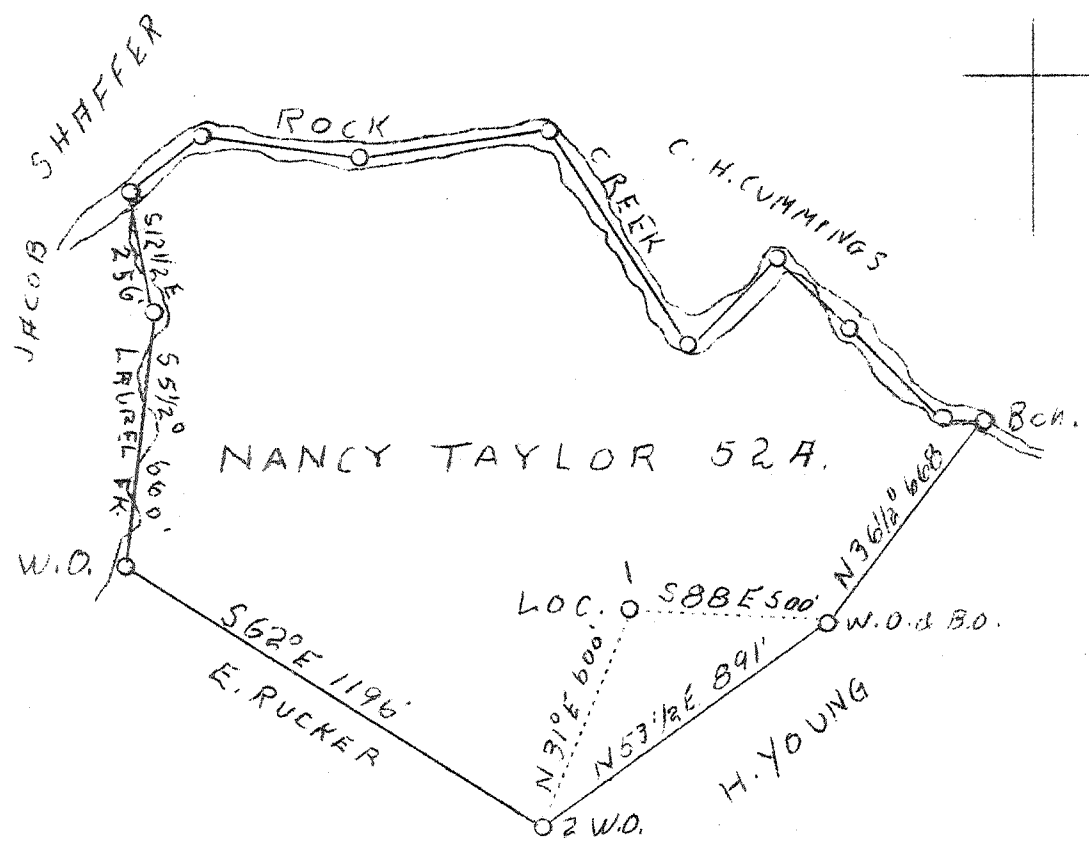


1 2 3

LATITUDE 38° 40'

LONGITUDE 81° 25'



34 S
0.8 W

H.B.D.

Company	W. S. Perry
Address	Charleston, W. Va.
Farm	Nancy Taylor
Acres	52
Well (Farm) No.	1
Elevation (S.P.)	980 B.
Quadrangle	Walton <i>N.C.</i>
County	Roane
District	Walton
Engineer	C. E. Krebs
Eng. Reg. No.	9
File No.	11-538
Date	April 28, 1938
Scale	1" = 500'

STATE OF WEST VIRGINIA
 Department of Mines
 OIL & GAS DIVISION
 Charleston

WELL LOCATION MAP

File No. Roa-194-A

X Denotes location of well on U. S. Topographic Maps, scale 1 to 62,500, latitude and longitude lines being represented by border lines as shown.

- Denotes one inch spaces on border line of original tracing.

Walton District, Roane County, W. Va.

By W. S. Perry, Box 1082, Charleston, W. Va.

On 52 acres, on Rock Creek.

Elevation, 980' L.

Surface owned by Nancy Taylor, Walton, W.Va., and minerals by
W. S. Perry.

Drilling, DK (don't know?)

6 $\frac{3}{8}$ " casing, 1900' (left in).

Oil well. Abandonment reported to Dept. of Mines April 28, 1938.

Record to ROT from Mrs. Griffith August 12, 1938.

	Top.	Bottom.
Conductor	0	8
Unrecorded	8	130
Sandstone	130	240
Unrecorded	240	300
Sand	300	326
Unrecorded	326	610
Sand (Saltsby) (Saltsburg?)	610	660
Unrecorded	660	930
Gas Sand	930	1090
Unrecorded	1090	1130
Sand	1130	1165
Unrecorded	1165	1350
Sand	1350	1390
Unrecorded	1390	1440
Salt Sand	1440	1870
Little Lime	1870	1892
Pencil Cave	1892	1895
Big Lime	1895	2045
Big Injun Sand	2045	2078
Total depth		2078

WEST VIRGINIA DEPARTMENT OF MINES
OIL AND GAS DIVISION

WELL RECORD

189

Permit No.

Oil or Gas Well.....Oil
(Kind)

Company..... W. S. Perry
 Address..... Box 1082, Charleston, W. Va.
 Farm..... Nancy Taylor Acres..... 52
 Location (waters)..... Rock Creek
 Well No..... One Elev..... 980
 District..... Walton County..... Roane
 The surface of tract is owned in fee by..... Nancy Taylor
 Address..... Walton, W. Va.
 Mineral rights are owned by..... W. S. Perry
 Address.....
 Drilling commenced..... DK
 Drilling completed..... DK
 Date shot..... Depth of shot.....
 Open Flow /10ths Water in..... Inch
 /10ths Merc. in..... Inch
 Volume..... Cu. Ft.
 Rock Pressure..... lbs..... hrs.
 Oil..... bbls., 1st 24 hrs.
 Fresh water..... feet..... feet
 Salt water..... feet..... feet

Casing and Tubing	Used in Drilling	Left in Well	Packers
Size			
16.....			Kind of Packer.....
13.....			
10.....			Size of.....
8 3/4.....			
6 5/8.....	<u>1900</u>	<u>1900</u>	Depth set.....
5 3/16.....			
3.....			Perf. top.....
2.....			Perf. bottom.....
Liners Used.....			Perf. top.....
			Perf. bottom.....

CASING CEMENTED..... SIZE..... No. FT..... Date.....
 COAL WAS ENCOUNTERED AT..... FEET..... INCHES
 FEET..... INCHES FEET..... INCHES
 FEET..... INCHES FEET..... INCHES

Formation	Color	Hard or Soft	Top	Bottom	Oil Gas or Water	Depth Found	Remarks
Conductor			0	8			
Unrecorded			8	130			
Sandstone			130	240			
Unrecorded			240	300			
Sand			300	326			
Unrecorded			326	610			
Sand (Saltsby)			610	660			
Unrecorded			660	930			
Gas Sand			930	1090			
Unrecorded			1090	1130			
Sand			1130	1165			
Unrecorded			1165	1350			
Sand			1350	1390			
Unrecorded			1390	1440			
Salt Sand			1440	1870			
Little Lime			1870	1892			
Pencil Cave			1892	1895			
Big Lime			1895	2045			
Big Injun			2045	2078			
Total Depth				2078			

AUG 12 1938

