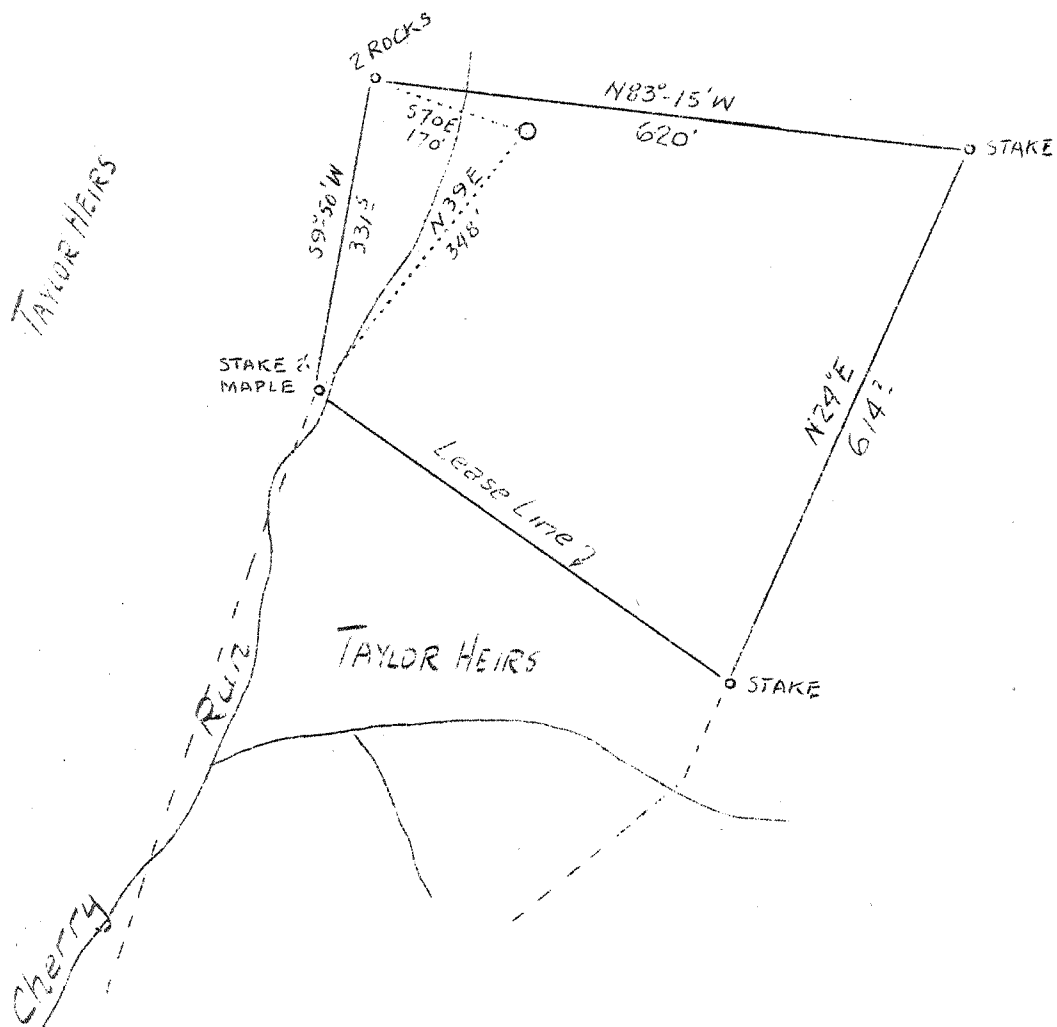


LATITUDE 38° 35'

LONGITUDE 81° 20'

0.85 S  
1.68 W

# TAYLOR HEIRS



0.9 S  
1.7 W

To be abandoned

Company	Northeastern Oil & Gas
Address	Charleston, W. Va.
Farm	Taylor Heirs
Acres	6
Lease No.	5
Well (Farm) No.	1
Serial No.	15
Elevation (SP)	850 - B
Quadrangle	Walton S. E. <i>S.C.</i>
County	Rome
District	Walton
Engineer	B. B. Couk (Corek)
Eng. Reg. No.	Pa. 4274
File No.	5
Date	July 1, 1938
Scale	1" = 200'

STATE OF WEST VIRGINIA  
 Department of Mines  
 OIL & GAS DIVISION  
 Charleston

### WELL LOCATION MAP

File No. ROA-196A

x Denotes location of well on U. S. Topographic Maps, scale 1 to 62,500, latitude and longitude lines being represented by border lines as shown.

- Denotes one inch spaces on border line of original tracing.

WEST VIRGINIA DEPARTMENT OF MINES  
OIL AND GAS DIVISION

191

WELL RECORD

Gas

Permit No. ....

Oil or Gas Well (Kind) .....

Company Northeastern Oil & Gas Company  
 Address Charleston, W. Va.  
 Farm Taylor Heirs Acres 6  
 Location (waters) Left hand fork of Sandy  
 Well No. 15 Elev. 840B  
 District Walton County Roane  
 The surface of tract is owned in fee by Taylor Heirs  
 Address Wellford, W. Va.

Mineral rights are owned by .....

Drilling commenced .....

Drilling completed October, 1926

Date shot .....

Open Flow 45 /10ths Water in 3" Inch

/10ths Merc. in .....

Volume 719,280 Cu. Ft.

Rock Pressure .....

Oil .....

Fresh water .....

Salt water .....

Casing and Tubing	Used in Drilling	Left in Well	Packers
Size			
16			Kind of Packer.....
13			
10			Size of.....
8 1/4			
6 5/8		1621	Depth set.....
5 3/16			
3			Perf. top.....
2			Perf. bottom.....
Liners Used.....			Perf. top.....
			Perf. bottom.....

CASING CEMENTED.....SIZE.....No. FT.....Date

COAL WAS ENCOUNTERED AT.....FEET.....INCHES

.....FEET.....INCHES.....FEET.....INCHES

.....FEET.....INCHES.....FEET.....INCHES

Formation	Color	Hard or Soft	Top	Bottom	Oil Gas or Water	Depth Found	Remarks
Salt Sand			1145	1512	Water Water	1210 1340	
Red Rock			1520	1525			
Slate and Shells			1525	1563			
Little Lime			1563	1605			
Pencil Cave			1605	1615			
Big Lime			1615	1748			
Big Injun			1748	1755			
GAS			1755	1783			
Slate Break in Injun			1788	1792			
Sand - Little Gas			1792	1796			
Total Depth				1807			

