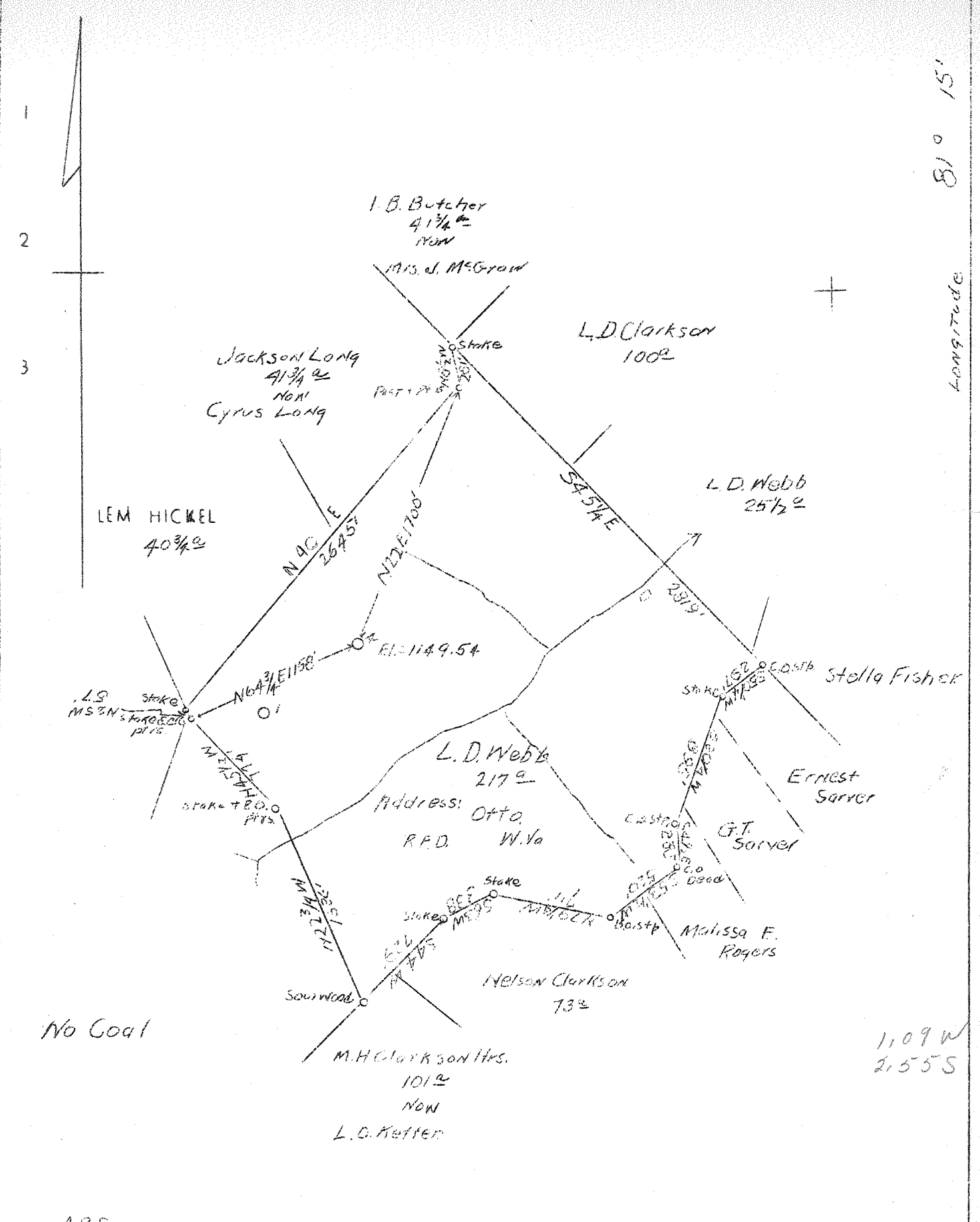


LATITUDE 38° 45'

81° 15'

Longitude



No Coal

1,109 W
2,555 S

ABD.

Company	South Penn Oil Co.
Address	411-7th Ave., Pgh. Pa.
Farm	L. D. & E. Webb
Acres	217
Lease No.	62032
Well (Farm) No.	4
Quadrangle	Walton N.E
County	Roane
District	Smithfield
Engineer	E. C. Tabler
Date	August 24, 1938
Scale	1" = 800'

STATE OF WEST VIRGINIA
 Department of Mines
 OIL & GAS DIVISION
 Charleston

see microfilm for Well Record

WELL LOCATION MAP

File No. R00-199

X Denotes location of well on U. S. Topographic Maps, scale 1 to 62,500, latitude and longitude lines being represented by border lines as shown.

- Denotes one inch spaces on border line of original tracing.