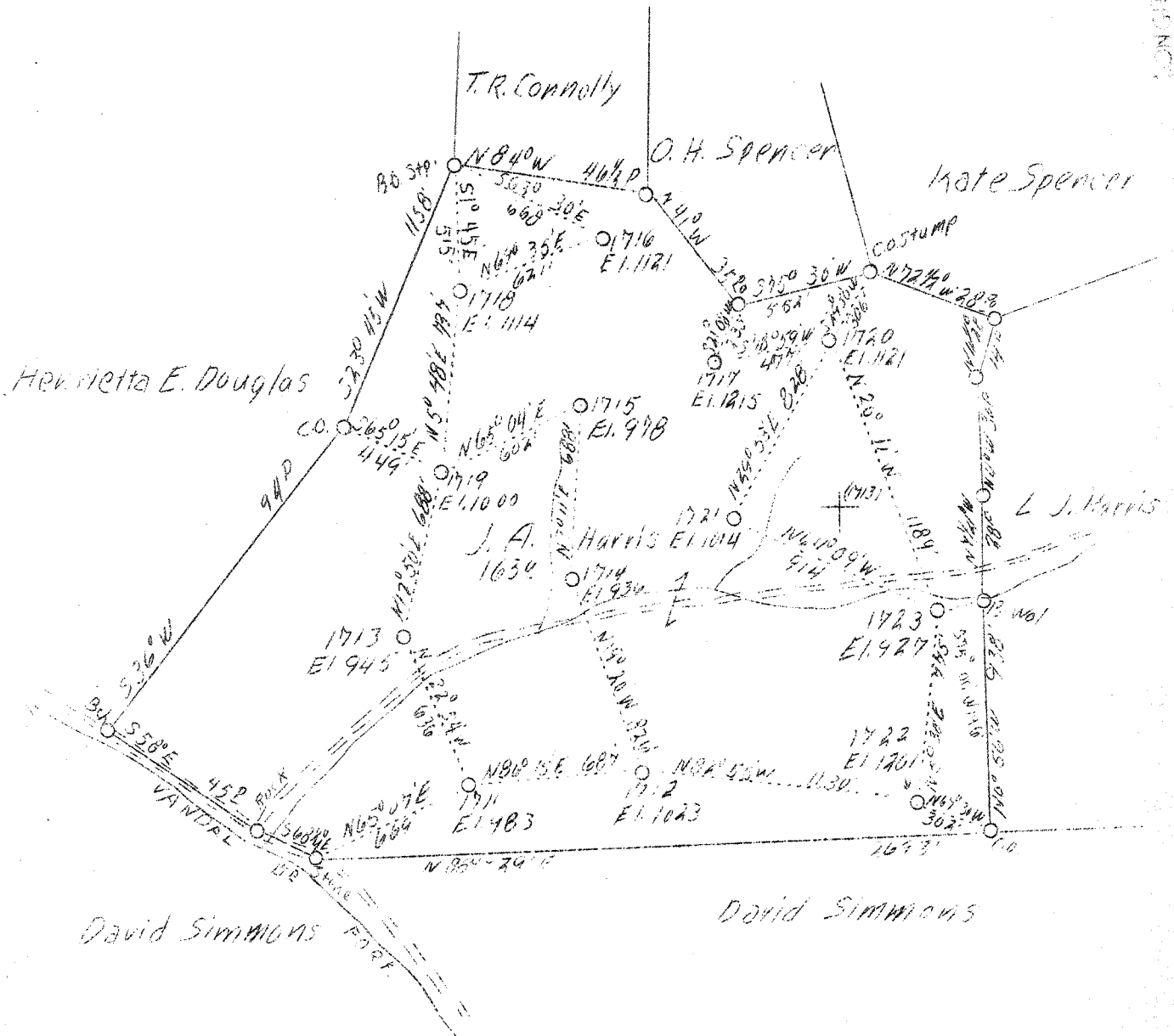


LONGITUDE 81° 17'



To be plugged by
Road & Moses
Salem, W. Va

F.B.D. - 1712-16-18-19-20-1123

F.B. 658 P 21 27

Company	Hope Constr. & Ref. Co.
Address	Clarksburg, W. Va.
Form	J.A. Harris
Acres	163
Lease No.	5923
Serial No.	1711 etc. 1723
El. (Spirit Level)	983, 1023, 945, 936, 978, 1121, 1215, 1114, 1000, 1121, 1014, 1201, 927
Quadrangle	Spencer
County	Roane
District	Smithfield
Eng.	W.M. Bowers
Eng. Reg. No.	900
Date	11/2/38
Scale	1" - 40 Pts.

STATE OF WEST VIRGINIA
Department of Mines
OIL AND GAS DIVISION
Charleston

WELL LOCATION MAP

File No. Proc-212-13-14-15-16-217
H.B.D.

x Denotes location of well on U.S. Topographic maps, scale 1 to 62,500, latitude and longitude lines being represented by border lines as shown.

- Denotes one inch space on border line of original tracing.

LATITUDE 38° 47' 30"

LONGITUDE 81° 08'

+

1,83W
2,185

7.5 OGIS topo location

7.5' loc _____ 15' loc _____
(calc.) _____

Company # 1716 _____

Farm _____

Quad Spencer 7 1/2 _____

County Roane _____

District Smithfield _____

WELL LOCATION MAP

File No. 087-213A

87-212A

J A Harris 1712

Elev = 1023

TD = 2198

87-213A

J A Harris 1716

Elev = 1121

TD = 2295

See microfilm
for
Well
records

87-214A

J A Harris 1718

Elev = 1114'

TD = 2288

87-215A

J A Harris 1719

Elev = 1000'

TD = 2172'

87-216A

J A Harris 1720

Elev = 1121

TD = 2292

87-217A

J A Harris 1723

Elev = 927'

TD = 2096