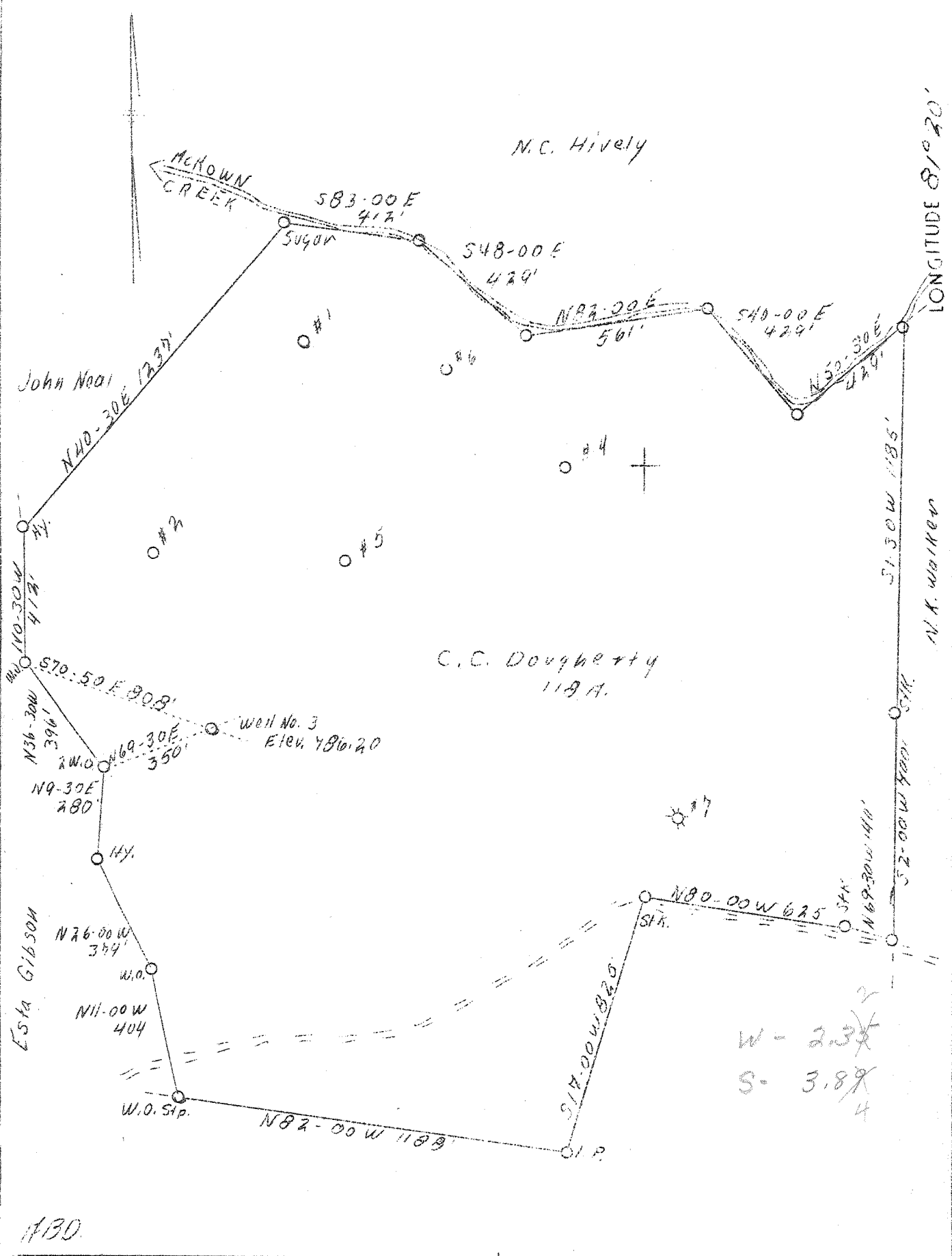


LATITUDE 38° 40'

LONGITUDE 81° 20'



1130

Company	Roane County Oil Co.
Address	Parkersburg, W. Va.
Farm	C. C. Dougherty
Acres	118
Well (Farm) No.	3
Elevation (SL)	786.30
Quadrangle	Walton C
County	Roane
District	Walton
Engineer	L. F. Dye
Eng. Reg. No.	804
Date	Nov. 18, 1938
Scale	1" - 400'

STATE OF WEST VIRGINIA  
 Department of Mines  
 OIL & GAS DIVISION  
 Charleston

WELL LOCATION MAP

File No. Ro-218-A

x Denotes location of well on U. S. Topographic Maps, scale 1 to 62,500, latitude and longitude lines being represented by border lines as shown.

- Denotes one inch spaces on border line of original tracing.

87-20218

Sheet # 1343

Hamilton Oil Co.

COMPLETION

SERIAL NO. \_\_\_\_\_ FARM C.C. & M.D. Daugherty WELL No. 3  
 ELEVATION \_\_\_\_\_ N. \_\_\_\_\_ S. 57 E. \_\_\_\_\_ W. 43-4  
 CONTRACTOR \_\_\_\_\_ ACRES \_\_\_\_\_  
 WATERS OF McCowans Creek  
 DISTRICT Walton COUNTY Roane STATE W. Va.  
 DRILLING COMMENCED \_\_\_\_\_ COMPLETED 12/4/09 DEPTH 2040

SANDS	TOP	BOTTOM	ELEV. TOP	CASING
PGH. COAL OR BIG LIME				

PACKERS AND DEPTH SET

INITIAL PROD. 10 Bbls. SAND Injun DEPTH \_\_\_\_\_  
 GAS TEST \_\_\_\_\_ " \_\_\_\_\_ "  
 SHOT \_\_\_\_\_ QUARTS \_\_\_\_\_ " \_\_\_\_\_ "  
 REMARKS Comp. in Injun

REPORTED BY \_\_\_\_\_ ABANDONED \_\_\_\_\_  
 F. O. 535-10M-10-21

STATE OF WEST VIRGINIA  
DEPARTMENT OF MINES  
OIL AND GAS DIVISION

199

## WELL RECORD

Permit No. AP-213-A.

Oil or Gas Well Oil  
(Kind)

Company..... Roane County Oil Company  
Address..... Philadelphia, Penna.  
Farm..... C. C. Dougherty Acres..... 118  
Location (waters)..... McKowns Creek  
Well No..... #3 Elev. 786.30  
District..... Walton County..... Roane  
The surface of tract is owned in fee by.....  
Address.....  
Mineral rights are owned by.....  
Address.....  
Drilling commenced..... August 12, 1909  
Drilling completed..... October 19, 1909  
Date shot..... Oct. 21, 1909 Depth of shot..... 2013-2033  
Open Flow..... /10ths Water in..... 40 qts..... Inch  
..... /10ths Merc. in..... Inch  
Volume..... Cu. Ft.  
Rock Pressure..... lbs..... hrs.  
Oil..... 10 Bbls (From south (Penn. card)) bbls., 1st 24 hrs.  
Fresh water..... feet..... feet  
Salt water..... feet..... feet

Casing and Tubing	Used in Drilling	Left in Well	Packers
Size			Kind of Packer.....
16.....			
13.....			
10.....	<u>300'</u>	<u>300'</u>	Size of.....
8 1/4.....	<u>895'</u>	<u>895'</u>	
6 5/8.....	<u>1883'</u>	<u>1883'</u>	Depth set.....
5 3/16.....			
3.....			Perf. top.....
2.....			Perf. bottom.....
Liners Used.....			Perf. top.....
			Perf. bottom.....

CASING CEMENTED..... SIZE..... No. FT..... Date.....  
COAL WAS ENCOUNTERED AT..... FEET..... INCHES  
..... FEET..... INCHES..... FEET..... INCHES  
..... FEET..... INCHES..... FEET..... INCHES

Formation	Color	Hard or Soft	Top	Bottom	Oil Gas or Water	Depth Found	Remarks
Conductor				12			
Little Dunkard			760'				
Big Dunkard			890				
Second Salt			1460		Water	1510'	
Little Lime			1840	1878			
Big Lime			1878	2001			
Big Injun			2001	2038	First Pay		
First Pay			( 2013	2033)			
				2038			
	Total Depth						

(Over)