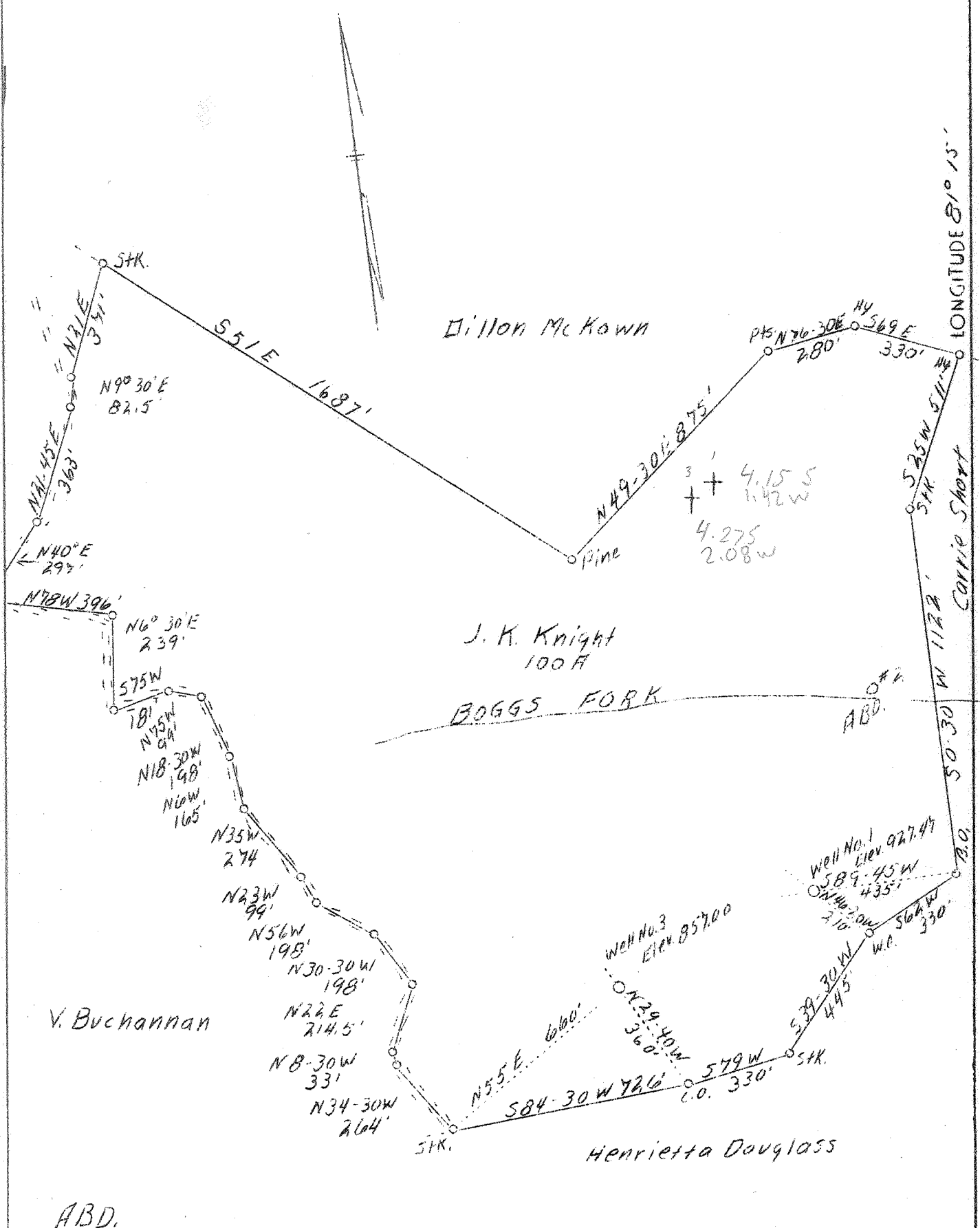


LATITUDE 38° 50'

LONGITUDE 81° 15'



Company F. F. McIntosh
 Address Spencer, W. Va.
 Farm J. K. Knight
 Acres 100
 Well (Farm) No. 1-3
 Elevation (SL) #1-927.47, #3-857.00
 Quadrangle Spencer
 County Roane
 District Spencer
 Engineer L. F. Dye
 Eng. Reg. No. 804
 Date March 9, 1939
 Scale 1" = 400'

NOTE 330 A
 Parcel = 2006-2026
 Big Lin = 2026-2125
 RT = 2125-70

STATE OF WEST VIRGINIA
 Department of Mines
 OIL & GAS DIVISION
 Charleston

WELL LOCATION MAP

File No. 100-229-230-A

See microfilm for well records
 x Denotes location of well on U. S. Topographic Maps, scale 1 to 62,500, latitude and longitude lines being represented by border lines as shown.

* Denotes one inch spaces on border line of original tracing.