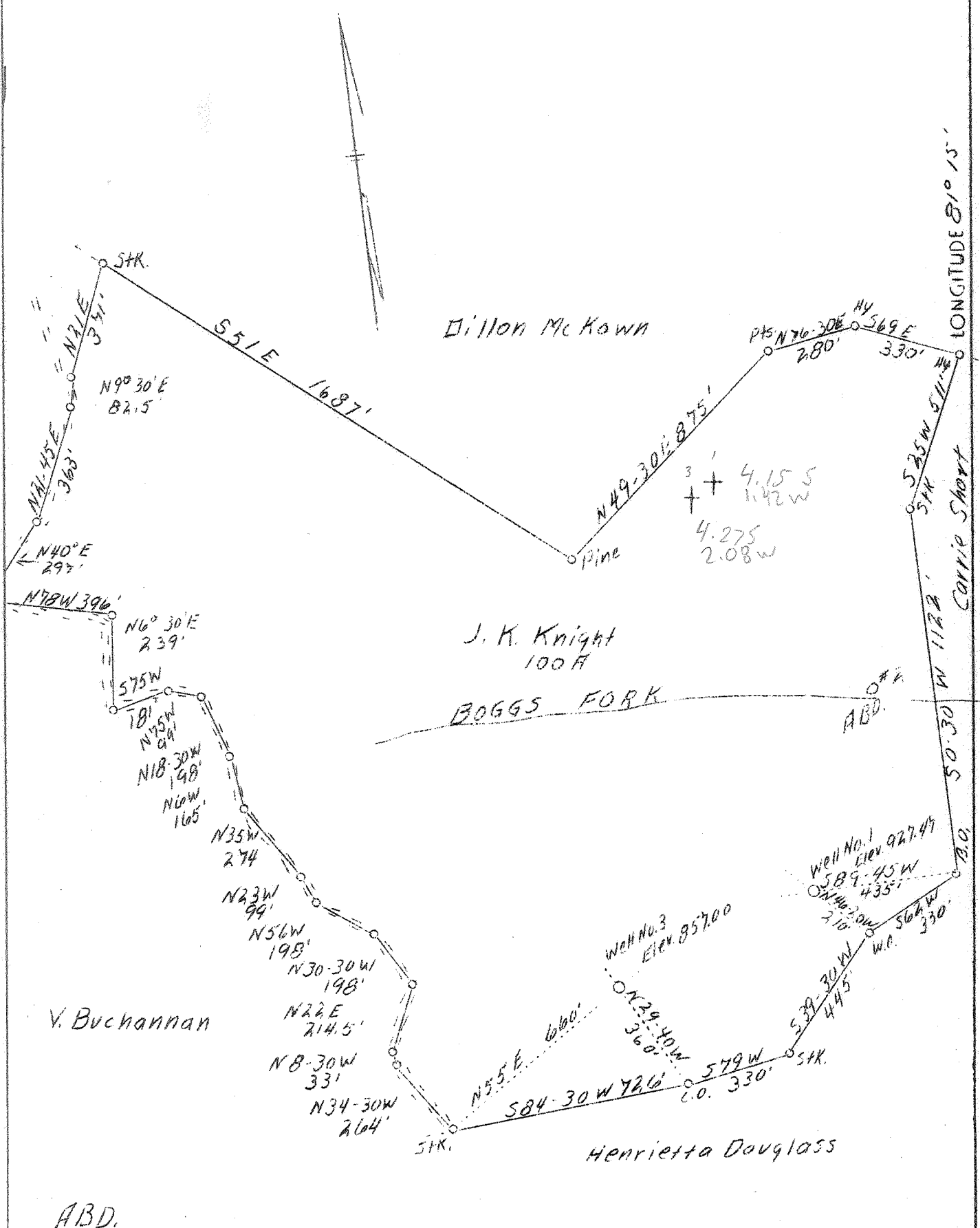


LATITUDE 38° 50'

LONGITUDE 81° 15'



ABD.

Company	F. F. McIntosh
Address	Spencer, W. Va.
Farm	J. K. Knight
Acres	100
Well (Farm) No.	1-3
Elevation (SL)	#1-927.47, #3-857.00
Quadrangle	Spencer
County	Roane
District	Spencer
Engineer	L. F. Dye
Eng. Reg. No.	804
Date	March 9, 1939
Scale	1" = 400'

NOTE 230 A
 Paulak = 2006-2026
 Biglin = 2026-2125
 BT = 2125-70

STATE OF WEST VIRGINIA
 Department of Mines
 OIL & GAS DIVISION
 Charleston

WELL LOCATION MAP

File No. 100-229-230-A

See microfilm for well records
 x Denotes location of well on U. S. Topographic Maps, scale 1 to 62,500, latitude and longitude lines being represented by border lines as shown.

* Denotes one inch spaces on border line of original tracing.