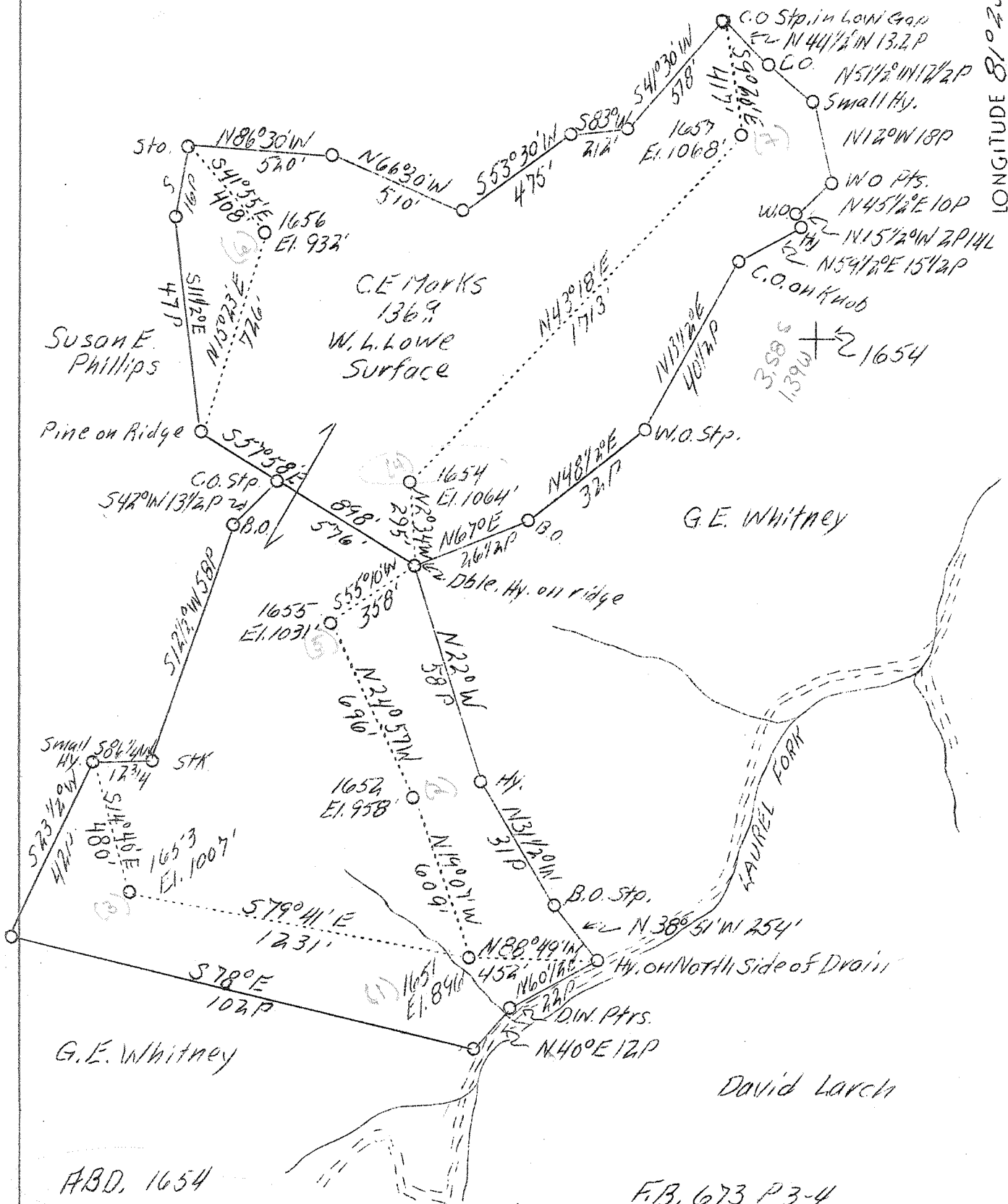


LATITUDE 38°40'

LONGITUDE 81°25'

Laura Hunt



A.B.D. 1654

F.B. 673 P3-4

Company	Hope Constr. & Refining Co.
Address	Clarksburg, W. Va.
Farm	C. E. Marks
Acres	136
Lease No.	5911
Well (Farm) No.	4
Serial No.	1651-1652-1653-1654- 1655-1656-1657
Elevation (SL)	See Above W.F.
Quadrangle	Walton
County	Roane
District	Harper
Engineer	W. M. Bowers
Eng. Reg. No.	900
Date	May 22, 1939
Scale	1" - 30 poles

STATE OF WEST VIRGINIA
Department of Mines
OIL & GAS DIVISION
Charleston
WELL LOCATION MAP
File No. <u>ROA - 231 A</u>
See microfilm for well record
x Denotes location of well on U. S. Topographic Maps, scale 1 to 62,500, latitude and longitude lines being represented by border lines as shown.
- Denotes one inch spaces on border line of original tracing.

171180
-1615
575

D-16 Div Mo. rpt. May 1939, Table 10

0 2130'

15 in @ 360'

8 in @ 456'

6 in @ 966'

2 in @ 2120'



<p>DESCRIPTION OF WORK</p>	<p>QUANTITY</p>	<p>UNIT</p>
<p>Excavation for foundation</p>	<p>150</p>	<p>cubic yds</p>
<p>Foundation concrete</p>	<p>150</p>	<p>cubic yds</p>
<p>Foundation masonry</p>	<p>150</p>	<p>sq ft</p>
<p>Foundation steel</p>	<p>150</p>	<p>lb</p>
<p>Foundation formwork</p>	<p>150</p>	<p>sq ft</p>