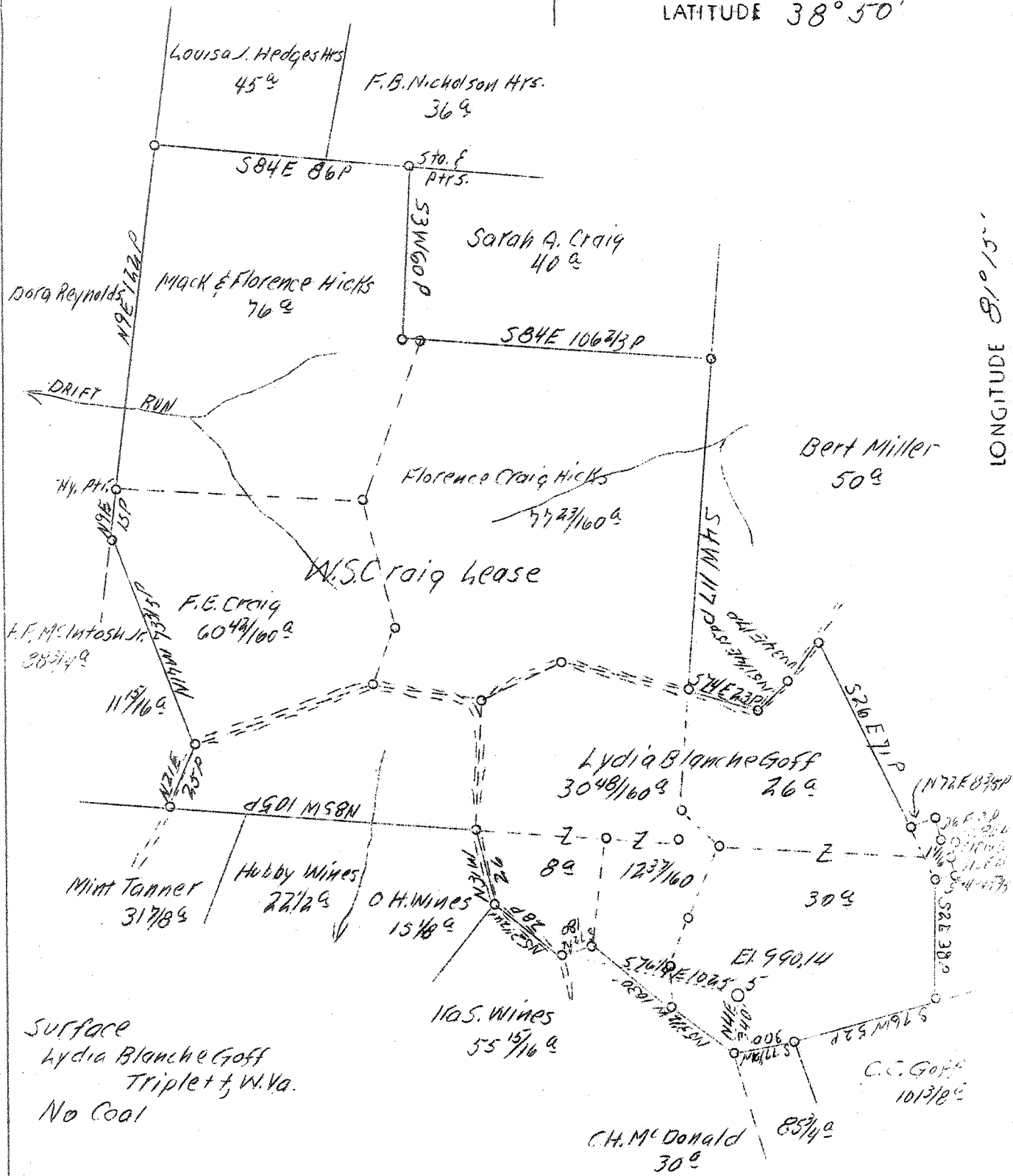


LATITUDE 38° 50'

LONGITUDE 81° 15'



Surface
Lydia Blanche Goff
Triplett, W. Va.
No Coal

W-3.26
S-1.05

ABD.

Company	South Penn Oil Co.
Address	411 7th Ave. Pittsburgh, Pa.
Farm	W.S. Craig
Acres	326
Tract No.	65758
Well (Farm) No.	5
W.L. (S.L.)	990.14
Quadrangle	Spencer <i>SW1</i>
County	Reano
District	Spencer
Eng.	E.C. Tablor
Date	8/1/39
Scale	1" = 800'

STATE OF WEST VIRGINIA
Department of Mines
OIL AND GAS DIVISION
Charleston

WELL LOCATION MAP

File No. Ro-738-A

x Denotes location of well on U.S. Topographic Maps, scale 1 to 62,500, latitude and longitude lines being represented by border lines as shown.
- Denotes one inch spaces on border line of original tracing.

87-238A

Spencer District, Boone County, W. Va.
 By South Penn Oil Co., Parkersburg, W. Va. (Now South Penn Nat. Gas Co.)
 Abandoned under permit No. 238-A.
 On 326 acres.

Elevation, 990.14' l.
 Drilling completed May 17, 1917.
 Shot May 22, 1917, with 40 qts., in Big Lujan Sand.
 Production last 24 hrs., 1 bbl.
 S. W. M. at 2011, 2106, 2128, 2136, 2140, and 2152'
 10" casing, 82' (pulled 40'); 8 1/2", 1310' (pulled); 6", 2027' (1720' pulled)
 Abandoned Oct. 9, 1939.

See microfilm
 for well
 record

	Top.	Bottom.
Conductor	0	16
Red rock	16	60
Slate	60	200
Sand	200	270
Slate	270	365
Sand	365	392
Slate and red rock	392	500
Sand	500	530
Red rock	530	600
Lime	600	650
Red rock	650	680
Sand	680	700
Lime	700	740
Red rock	740	800
Lime	800	810
Red rock	810	900
Little Dunbar Sand	900	980
Red rock	980	1020
Sand	1020	1045
Slate	1045	1100
Big Dunbar Sand	1100	1230
Slate and shells	1230	1330
Gas Sand	1330	1445
Slate	1445	1475
Sand	1475	1540
Slate and shells	1540	1750
Salt Sand (hole full water, 1820')	1750	1910
Merton Sand	1910	1960
Little Lime	1960	1995
Pencil Core	1995	2000
Big Lime	2000	2106
Keener Sand	2106	2126
Slate	2126	2128
Big Injun Sand (gas, 2136') (oil, 2140')	2128	2151
Total depth		2152

2152
 2156