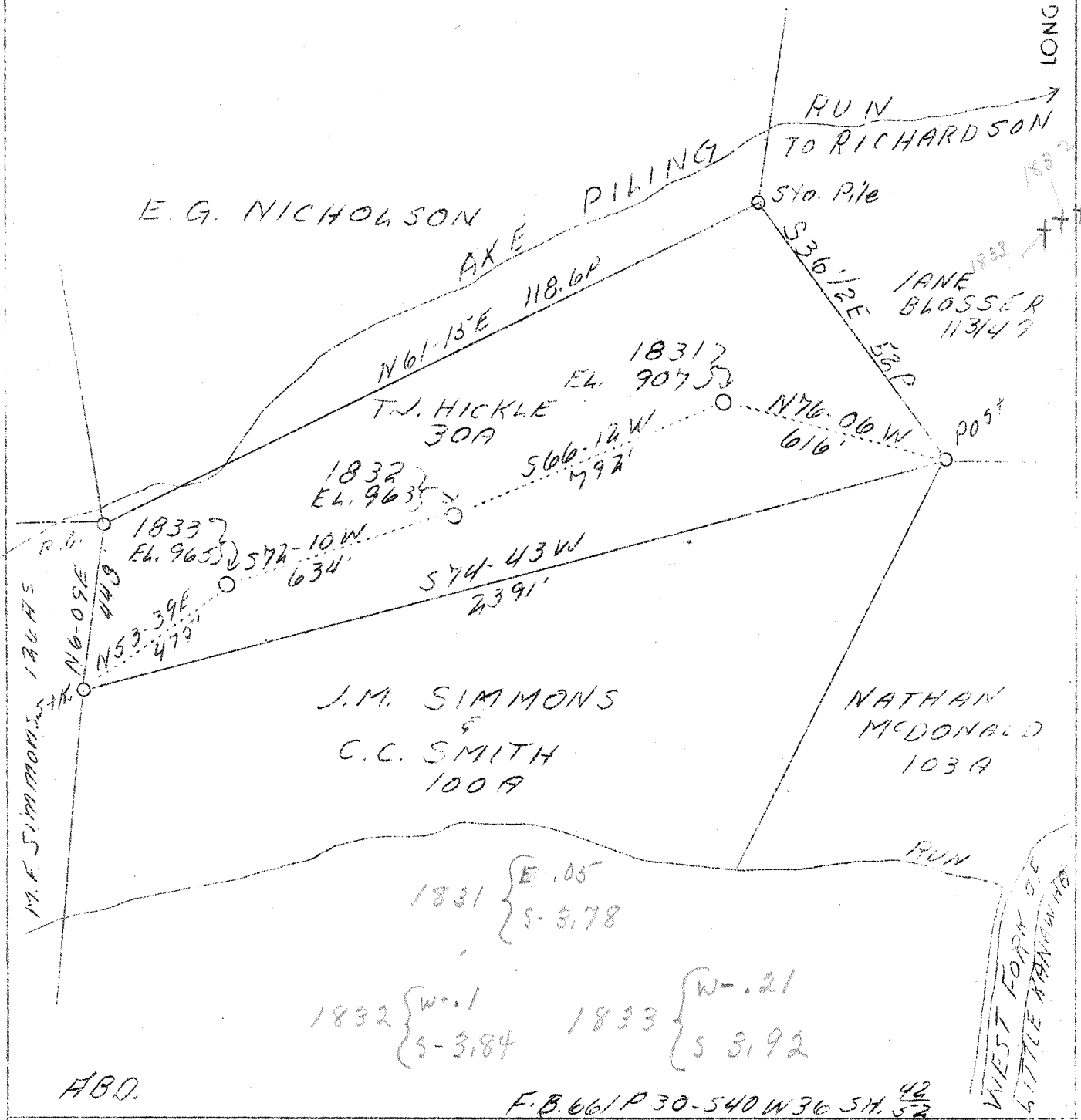


LATITUDE 38°55'

LONGITUDE 81°15'



ABD.

F.B. 661 P 30-540 W 36 511.52 <sup>42</sup>

Company	Hope Constr. & Ref. Co.
Address	Clarksburg, W.Va.
Farm	T.J. Hickle
Tract	1
Acres	30
Serial No.	1831, 1832, 1833
Quadrangle	Spencer
County	Roane
District	Spencer
Eng.	W.M. Bowers
Eng. Reg. No.	900
Date	8/29/39
Scale	1" = 400'

STATE OF WEST VIRGINIA  
 Department of Mines  
 OIL AND GAS DIVISION  
 Charleston

WELL LOCATION MAP

File No. 1700-241A-3-2244-A  
1/11/18 1833-1832-1831

x Denotes location of well on U.S. Topographic Maps, scale 1 to 62,500, latitude and longitude lines being represented by border lines as shown.

- Denotes one inch spaces on border line of original tracing.

see microfilm for well record

1474