

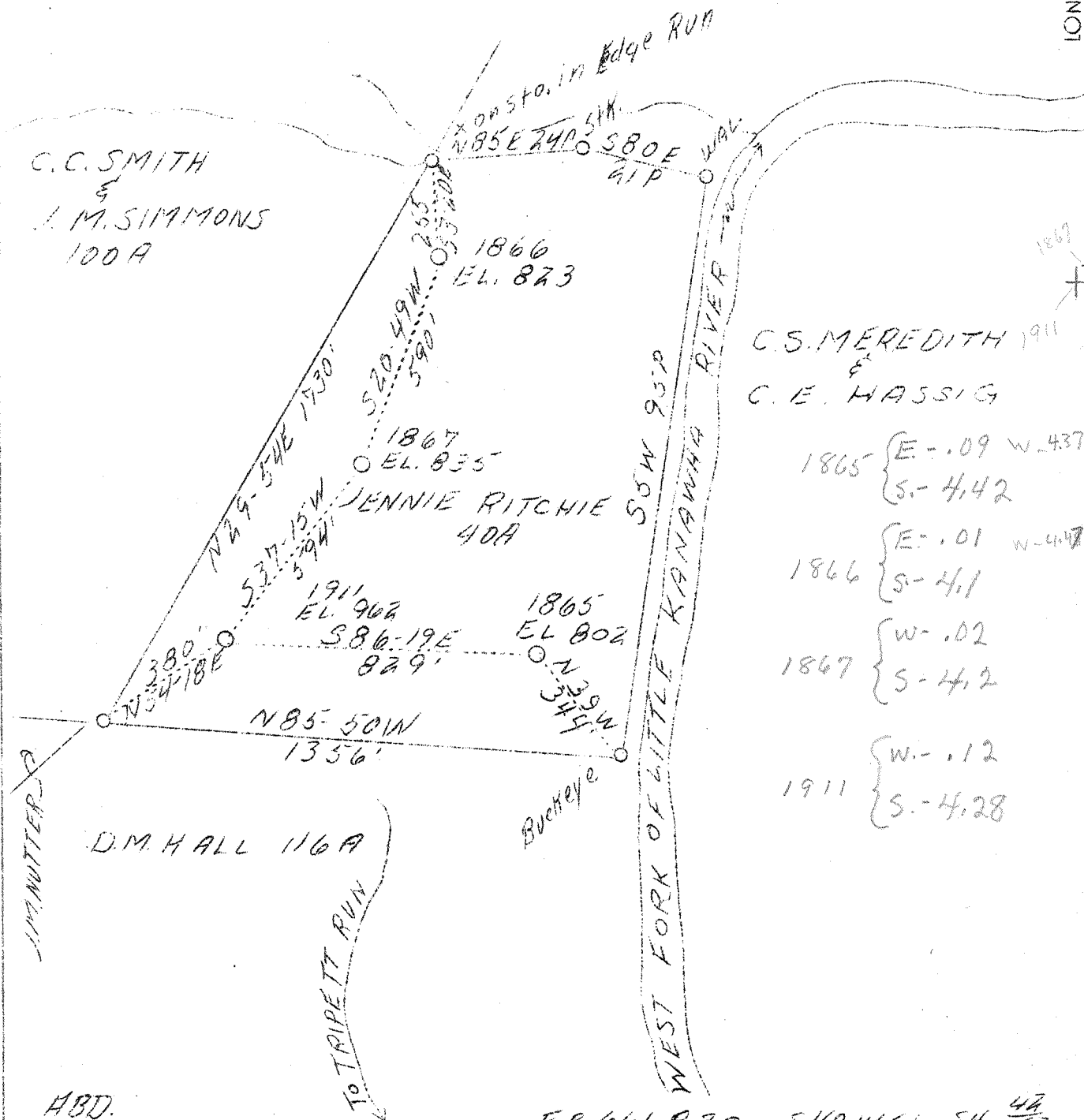
LATITUDE 38° 55'

JANE BLOSSER

T. J. HICKLE  
30A

NATHAN M. McDONALD  
103A

LONGITUDE 81° 15'



C.S. MEREDITH 1911  
&  
C.E. HASSIG

1865 { E-.09 W-437  
      { S-4.42

1866 { E-.01 W-447  
      { S-4.1

1867 { W-.02  
      { S-4.2

1911 { W-.12  
      { S-4.28

ABD.

F.B. 661 P 30 540 W 66 54 47/52

Company	Hope Constr. & Ref. Co.
Address	Clarksburg, W. Va.
Farm	Jennie Ritchie
Tract	1
Acres	40
Serial No.	1865, 1866, 1867, & 1911
Quadrangle	Spencer E1
County	Roane
District	Spencer
Eng.	W.M. Bowers
Eng. Reg. No.	900
Date	8/29/39
Scale	1" = 400'

STATE OF WEST VIRGINIA  
Department of Mines  
OIL AND GAS DIVISION  
Charleston

Well record on microfilm (hard to read)  
WELL LOCATION MAP

File No. Proc. 2467-35250-A  
Well # 1865-1866-1867 & 1911

x Denotes location of well on U.S. Topographic Maps, scale 1 to 62,500, latitude and longitude lines being represented by border lines as shown.

- Denotes one inch spaces on border line of original tracing.