

LATITUDE 38°42'30"

81°17'30"

LONGITUDE

75' loc  
Dum  
1/3/92

7.5 OGIS topo location

7.5' loc \_\_\_\_\_ 15' loc \_\_\_\_\_  
\_\_\_\_\_ (calc.) \_\_\_\_\_

Company MOUNTAIN/ROCK & SUPPLY Co (2764)

Farm OG KINKAID I

ELEV: 852.14 G

Quad HOONEYVILLE

County ROANE

District SMITHFIELD

WELL LOCATION MAP

File No. 87-30319

TD: 1902

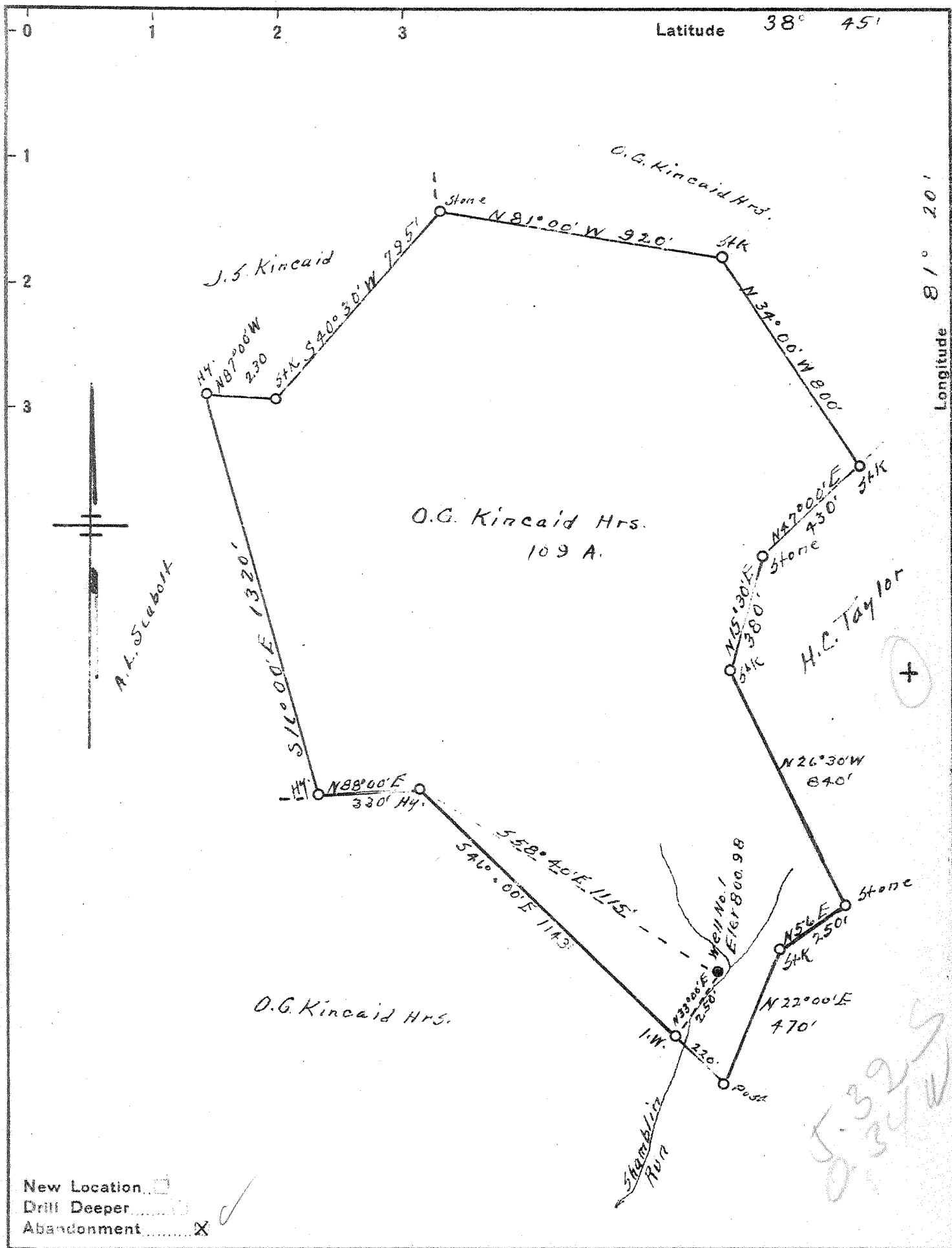
371 371

DRILLING DATES

Comm: 2/6/13

Comp: 3/14/1913

See microfilm  
for  
well record



New Location   
 Drill Deeper   
 Abandonment

Company Mountain Iron & Supply Co.  
 Address Parkersburg, W. Va.  
 Farm O.G. Kincaid Hrs.  
 Tract \_\_\_\_\_ Acres 109 Lease No. \_\_\_\_\_  
 Well (Farm) No. 1 Serial No. \_\_\_\_\_  
 Elevation (Spirit Level) 800.98  
 Quadrangle Walton NC  
 County Roane District Smithfield  
 Engineer L. F. Daye  
 Engineer's Registration No. 804  
 File No. \_\_\_\_\_ Drawing No. \_\_\_\_\_  
 Date Sept 17, 1941 Scale 1" = 400'

STATE OF WEST VIRGINIA  
 DEPARTMENT OF MINES  
 OIL AND GAS DIVISION  
 CHARLESTON

WELL LOCATION MAP  
 FILE NO. ROA-319A

+ Denotes location of well on United States Topographic Maps, scale 1 to 62,500, latitude and longitude lines being represented by border lines as shown.  
 - Denotes one inch spaces on border line of original tracing.