

38° 37' 30"

81° 07' 30"

Latitude

Longitude

3 1/2 loc

Topo Location

7.5' Loc.	<u>2.20 S</u>	15' Loc.	<u>5.08 S</u>
	<u>0.70 W</u>	(calc.)	<u>2.95 W</u>

Company \_\_\_\_\_

Farm John Smith 2

15' Quad Otter  
(sec.)

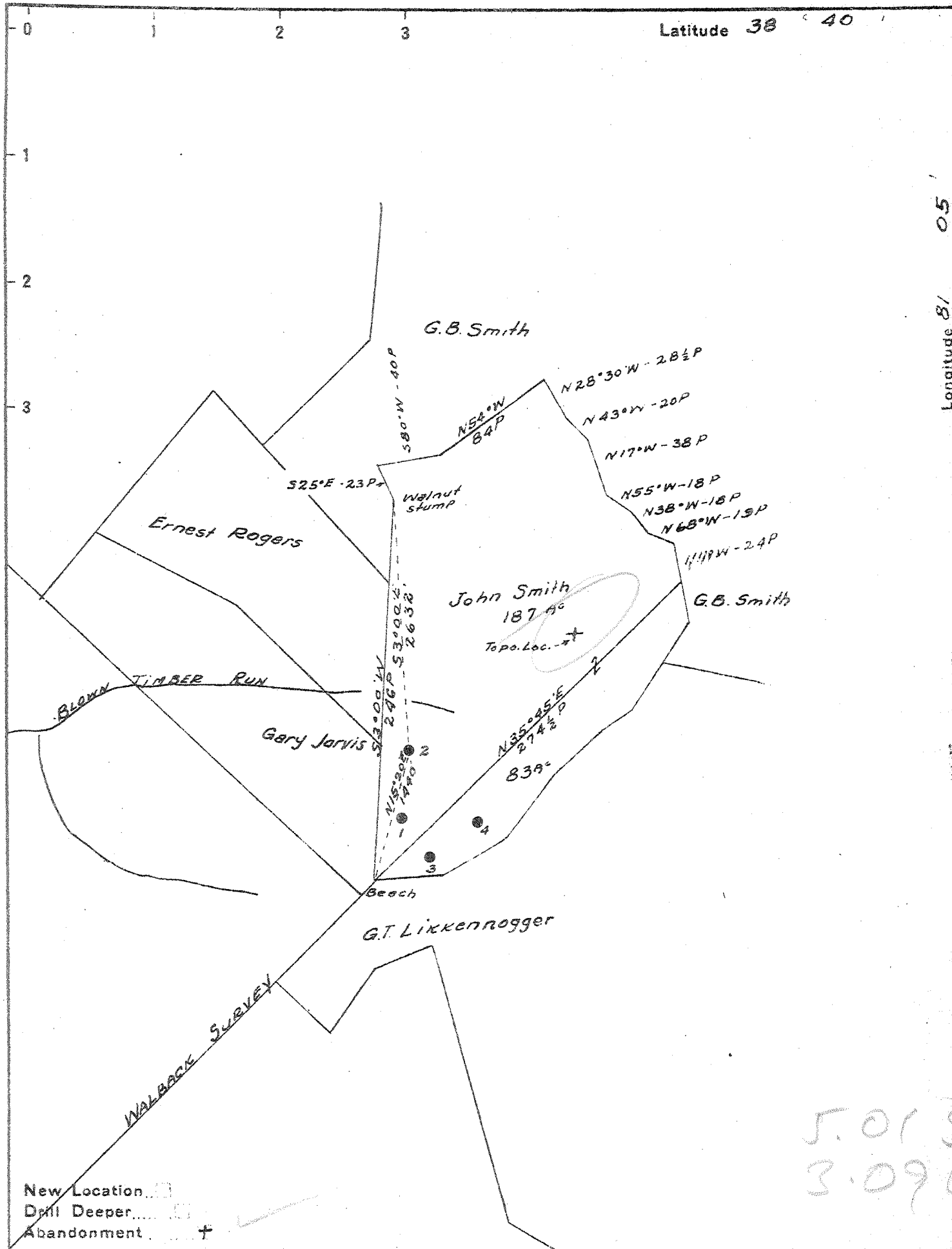
7.5' Quad Newton

District \_\_\_\_\_

WELL LOCATION PLAT

County 87 Permit 30330

98



J.O.S.  
3.090

Company GODFREY L. CABOT INC.

Address 900 UNION BLDG CHARLESTON W.VA.

Farm JOHN SMITH

Tract \_\_\_\_\_ Acres 187 Lease No. 3-B

Well (Farm) No. 2 Serial No. 551

Elevation (Spirit Level) 991.0

Quadrangle OTTER

County ROANE District GEARY

Engineer Roy Boston

Engineer's Registration No. \_\_\_\_\_

File No. \_\_\_\_\_ Drawing No. \_\_\_\_\_

Date 12-4-41 Scale 1" = 1320'

STATE OF WEST VIRGINIA  
DEPARTMENT OF MINES  
OIL AND GAS DIVISION  
CHARLESTON

WELL LOCATION MAP  
FILE NO. ROA-330A

+ Denotes location of well in United States Topographic Maps at 2500' latitude and longitude lines being represented by border lines as shown.

- Denotes one inch spaces on border line of original tracing.