

38° 37' 30"

Latitude

81° 07' 30"

Longitude

7 1/2 loc

Topo Location

7.5' Loc. 2.28 S 15' Loc. 5.16 S
0.75 W (calc.) 3.00 W

Company _____

Farm John Smith I

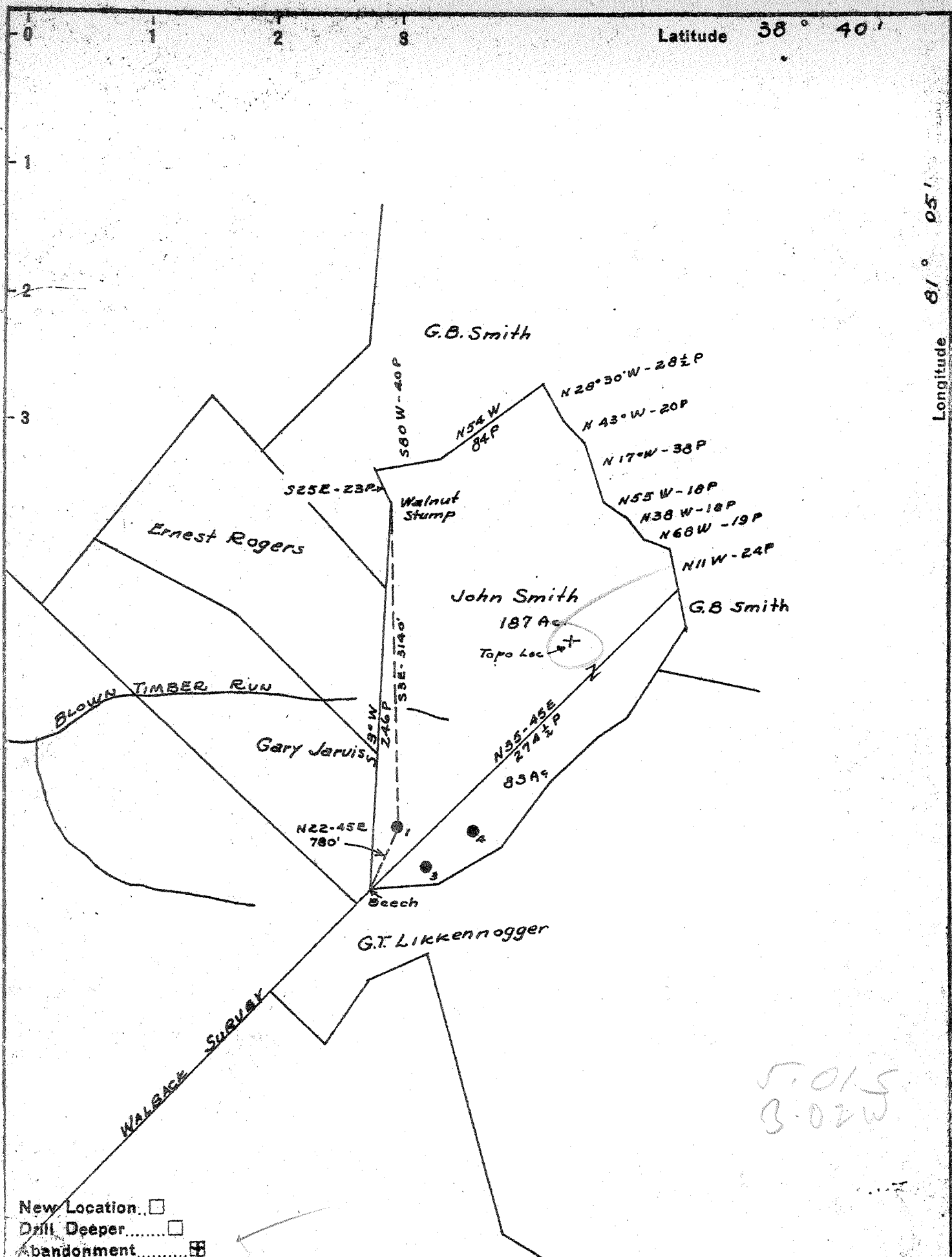
15' Quad Otter
(sec.)

7.5' Quad Newton

District _____

WELL LOCATION PLAT

County 87 Permit 30355



New Location
 Drill Deeper
 Abandonment

5.015
 B-02W

Company Godfrey L. Cabot Inc.
 Address 900 Union Bldg. Charleston W. Va.
 Farm John Smith
 Tract _____ Acres 187 Lease No. 3-8
 Well (Farm) No. 1 Serial No. 467
 Elevation (Spirit Level) 991.0
 Quadrangle Otter
 County Roane District Geary
 Engineer Ray Boston
 Engineer's Registration No. _____
 File No. _____ Drawing No. _____
 Date 9-21-42 Scale 1" = 1320'

STATE OF WEST VIRGINIA
 DEPARTMENT OF MINES
 OIL AND GAS DIVISION
 CHARLESTON

WELL LOCATION MAP
 FILE NO. ROA-355-A

+ Denotes location of well on United States Topographic Maps, scale 1 to 62,500, latitude and longitude lines being represented by border lines as shown.
 — Denotes one inch spaces on border line of original tracing.