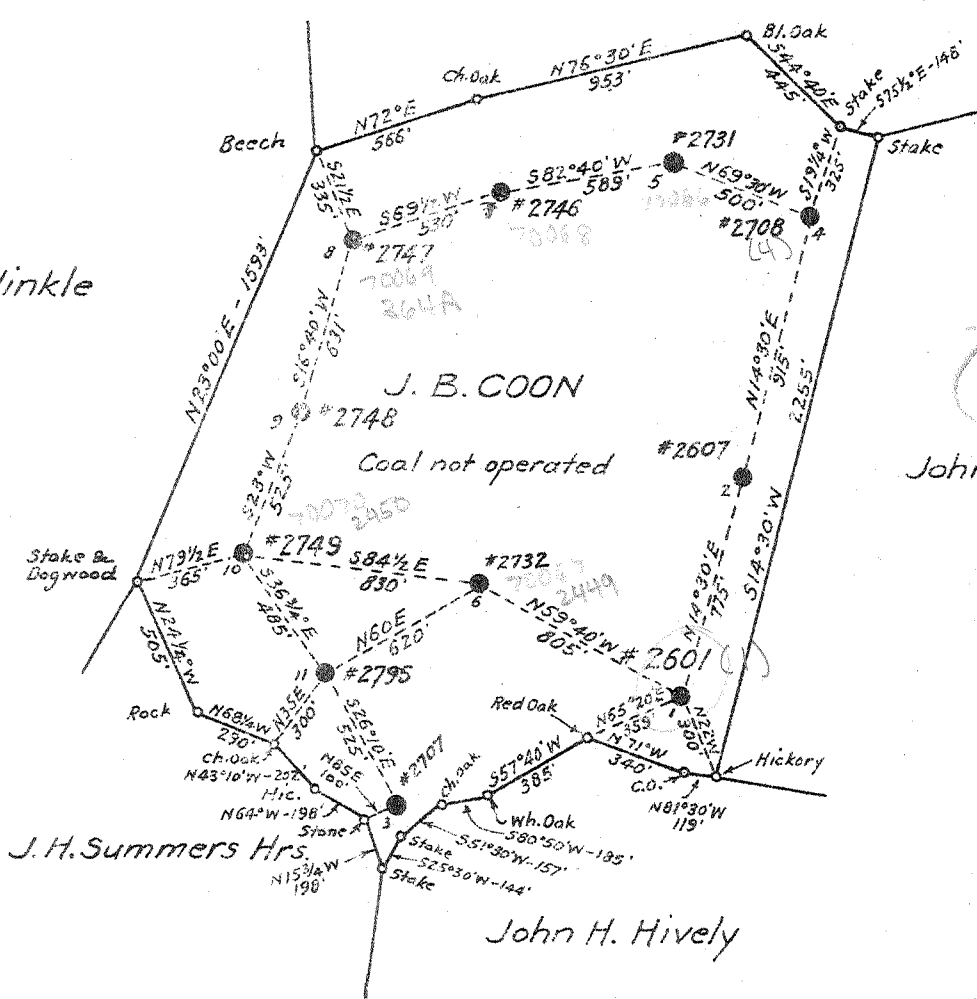


David Larch

J. H. Hinkle

J. B. COON

John Taylor



4.93 S  
1.30 W

- New Location...
- Drill Deeper...
- Abandonment...

Company	VIRGINIAN GASOLINE & OIL CO.
Address	CHARLESTON, W. VA.
Farm	J. B. COON
Tract	Acres 100 Lease No. 1933
Well (Farm) No.	1 Serial No. 2601
Elevation (Spirit Level)	1019.0
Quadrangle	WALTON
County	ROANE District WALTON
Engineer	<i>W. H. Summers</i>
Engineer's Registration No.	659
File No.	72-75 Drawing No.
Date	SEPT. 24, 1942 Scale 1" = 660'

STATE OF WEST VIRGINIA  
DEPARTMENT OF MINES  
OIL AND GAS DIVISION  
CHARLESTON

WELL LOCATION MAP  
FILE NO. ROA-356-A

- + Denotes location of well on United States Topographic Maps, scale 1 to 62,500, latitude and longitude lines being represented by border lines as shown.
- Denotes one inch spaces on border line of original tracing.

STATE OF WEST VIRGINIA  
DEPARTMENT OF MINES  
OIL AND GAS DIVISION

273

WELL RECORD

Permit No. 356-A

Oil or Gas Well Oil  
(KIND)

Company Virginian Gasoline & Oil Company  
 Address Box 2633, Charleston, W. Va.  
 Farm J. B. Coon Acres 100  
 Location (waters) Left Fork, Green Creek  
 Well No. 2601 Elev. 1019.0  
 District Walton County Roane  
 The surface of tract is owned in fee by M. C. Coon et al  
 Address Walton, W. Va.  
 Mineral rights are owned by Same  
 Address \_\_\_\_\_  
 Drilling commenced \_\_\_\_\_  
 Drilling completed November 27, 1907  
 Date Shot \_\_\_\_\_ From \_\_\_\_\_ To \_\_\_\_\_  
 With \_\_\_\_\_

Casing and Tubing	Used in Drilling	Left in Well	Packers
Size			
16	16'	16'	Kind of Packer
13			
10	480		Size of
8 1/4	875		
6 5/8	1915	1915	Depth set
5 3/16			
3			Perf. top
2	2075	2075	Perf. bottom
Liners Used			Perf. top
			Perf. bottom

Open Flow \_\_\_\_\_ /10ths Water in \_\_\_\_\_ Inch  
 \_\_\_\_\_ /10ths Merc. in \_\_\_\_\_ Inch  
 Volume \_\_\_\_\_ Cu. Ft.  
 Rock Pressure \_\_\_\_\_ lbs. \_\_\_\_\_ hrs.  
 Oil \_\_\_\_\_ bbls., 1st 24 hrs.  
 Fresh water \_\_\_\_\_ feet \_\_\_\_\_ feet  
 Salt water \_\_\_\_\_ feet \_\_\_\_\_ feet

CASING CEMENTED \_\_\_\_\_ SIZE \_\_\_\_\_ No. Ft. \_\_\_\_\_ Date \_\_\_\_\_  
 COAL WAS ENCOUNTERED AT \_\_\_\_\_ FEET \_\_\_\_\_ INCHES  
 \_\_\_\_\_ FEET \_\_\_\_\_ INCHES \_\_\_\_\_ FEET \_\_\_\_\_ INCHES  
 \_\_\_\_\_ FEET \_\_\_\_\_ INCHES \_\_\_\_\_ FEET \_\_\_\_\_ INCHES

Formation	Color	Hard or Soft	Top	Bottom	Oil, Gas or Water	Depth Found	Remarks
Big Lime				2040			
Big Injun			2040	2075	Gas	2055	
Total Depth				2097	Oil	2060	

