

LATITUDE $38^{\circ} 40'$

810 20

LONGITUDE

• $7\frac{1}{2}'$ loc
AV 1/3/92

7.5 OGIS topo location

7.5' loc _____ 15' loc _____
 (calc.) _____

Company MOUNTAIN IRON & SUPPLY

Farm JA DAUGHERTY 2

Elevation _____

Quad LOONEYVILLE

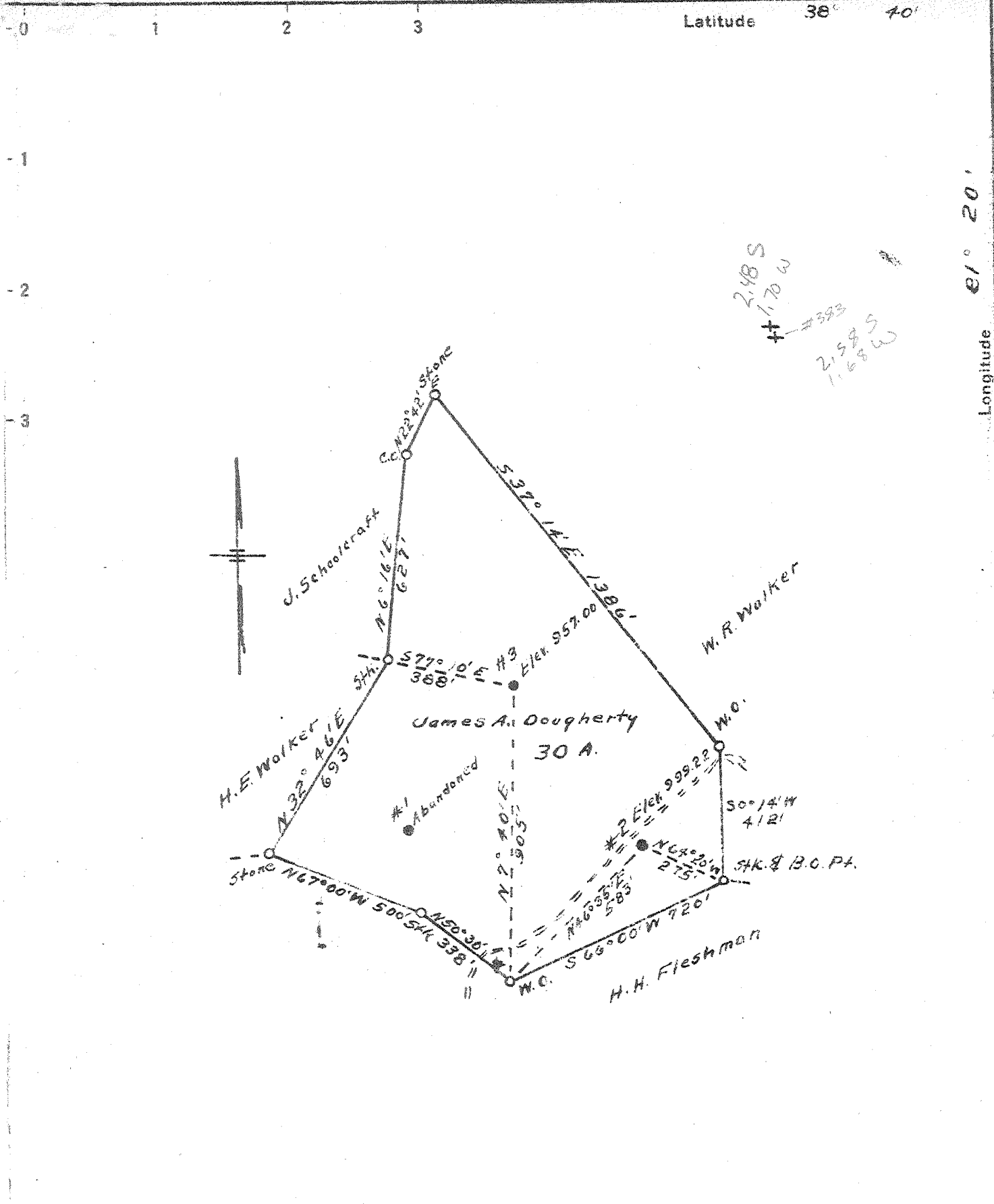
County ROANE

District WALTON

WELL LOCATION MAP

File No. 87-30383
(WAS 70092)

TD: 2080 372 371
Drawn: Comm: 7/20/1909
Comp: 8/13/1909



New Location
 Drill Deeper
 Abandonment

Company Mountain Iron & Supply Co.
 Address Portersburg, W. Va.
 Farm James A. Dougherty
 Tract _____ Acres 30 Lease No. _____
 Well (Farm) No. 2 & 3 Serial No. _____
 Elevation (Spirit Level) #2-999.22 #3-957.00
 Quadrangle Walton
 County Roane District Walton
 Engineer L.F. Dye
 Engineer's Registration No. 804
 File No. _____ Drawing No. _____
 Date 6-17-44 Scale 1" = 400'

STATE OF WEST VIRGINIA
 DEPARTMENT OF MINES
 OIL AND GAS DIVISION
 CHARLESTON

WELL LOCATION MAP
 FILE NO. ROA-383-2
ROA-384-3

+ Denotes location of well on United States Topographic Maps, scale 1 to 62,500, latitude and longitude lines being represented by border lines as shown.
 - Denotes one inch spaces on border line of original tracing.

70092

Walton District, Roane County, W. Va.
Fisher Oil Co.
On McKown Creek, 2 mi. S. E. of Walton.
Completed, Aug. 13, 1910.
Elevation, 1000' B.
10" casing, 290'; 8 1/4", 890'; 6-5/8", 1925'; conductor, 16'.
Shot at 2058-2080'. Showed for 25 to 30 bbls.

see page 2408

7

	Top.	Bottom.
Sandstone, Pittsburgh? (Lower Pittsburgh)	294	385
Salt Sand (water, 1670')	1540	1920
Big Lime	1920	2056
Big Injun Sand (oil pay, 2058-2080'). to bottom		2056 - 2082

Walton District, Boone County, W. Va.
 By Fisher Oil Co.
 Elevation, 1000' B.
 Completed Aug. 13, 1910.
 Located on Wolfen Creek, 2 mi. S. E. of Walton.
 10" casing, 200'; 8", 890'; 6", 1925'.
 Shot at 2053 to 2080 feet. Showed for 25 to 30 hrs.
 Oil well. Record published on p. 394 of W.-S.-C. Report.

7

	Thickness.	Total.
Conductor	16 -	16
Unrecorded	278 -	294
Sandstone, Pittsburgh? (Lower Pittsburgh)	91 -	385
Unrecorded	1155 -	1540
Salt Sand (water, 1670')	300 -	1940
Big lime	136 -	2076
Big Injan Sand (oil pay, 2053-2080')	26 -	2102
Total depth		2102

"The well starts about 175 feet below the Washington Coal horizon."

STATE OF WEST VIRGINIA
DEPARTMENT OF MINES
OIL AND GAS DIVISION

293

WELL RECORD

Permit No. 3503 A

Oil or Gas Well Oil
(KIND)

Company Mountain Iron & Supply Co.
 Address Parkersburg, W. Va.
 Farm J. A. Daugherty Acres 30
 Location (waters) see above
 Well No. 2 Elev. 999.22
 District Walton County Roane
 The surface of tract is owned in fee by J. A. Daugherty
 Address Walton, W. Va.
 Mineral rights are owned by see above
 Address _____
 Drilling commenced 7/20/09
 Drilling completed 8/13/09
 Date Shot 8/13/09 From 2060 To 2082
 With 40 gts
 Open Flow /10ths Water in _____ Inch
/10ths Merc. in _____ Inch
 Volume _____ Cu. Ft.
 Rock Pressure _____ lbs. _____ hrs.
 Oil 25-30 _____ bbls., 1st 24 hrs.
 Fresh water _____ feet _____ feet
 Salt water 1670 _____ feet _____ feet

Casing and Tubing	Used in Drilling	Left in Well	Packers
Size			Kind of Packer
16			
18			
10	290		Size of
8 1/2	890		
6 5/8	1925	1925	Depth set
5 3/16			
3			Perf. top
2		2078	Perf. bottom
Liners Used			Perf. top
			Perf. bottom

CASING CEMENTED _____ SIZE _____ No. Ft. _____ Date _____

COAL WAS ENCOUNTERED AT _____ FEET _____ INCHES
 _____ FEET _____ INCHES _____ FEET _____ INCHES
 _____ FEET _____ INCHES _____ FEET _____ INCHES

Formation	Color	Hard or Soft	Top	Bottom	Oil, Gas or Water	Depth Found	Remarks
Pitts.			294	385			
Salt			1540	1920			
Big Lime			1920	2056			
Injun			2056	2080	Oil	2058-80	
				To = 2082			

