

88° 37' 30"

Latitude

81° 07' 30"

Longitude

• 7/2 1/2

Topo Location

7.5' Loc. 2.56 S 15' Loc. 5.44 S  
0.68 W (calc.) 2.93 W

Company \_\_\_\_\_

Farm L O Baggis 3 (1950)

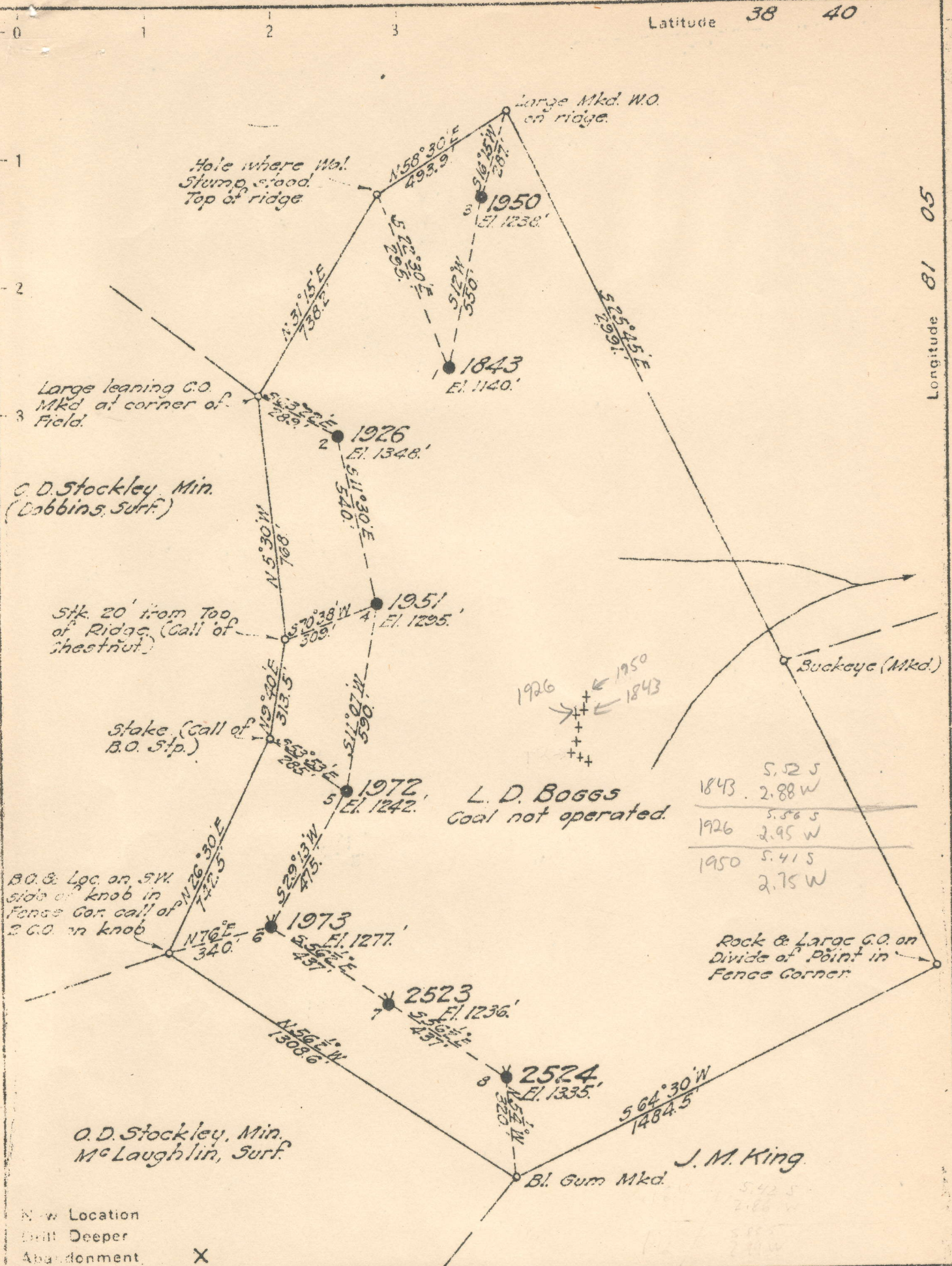
15' Quad Otter  
(sec.) \_\_\_\_\_

7.5' Quad Newton

District \_\_\_\_\_

WELL LOCATION PLAT

County 87 Permit 387A



New Location  
 Drill Deeper  
 Abandonment X

Company VIRGINIAN GASOLINE & OIL CO.  
 Address CHARLESTON W. VA.  
 Farm L. D. BOGGS  
 Tract \_\_\_\_\_ Acres 102 Lease No. 19893  
 Well Farm No. 1 Serial No. 1843  
 Elevation (Spirit Level) AS SHOWN.  
 Obstruction OTTER  
 County ROANE District GEARY  
 Engineer A. O. Cunningham  
 Engineer's Registration No. 659  
 File No. 88-75 Drawing No. \_\_\_\_\_  
 Date June 26, 1944 Scale 1" = 400'

STATE OF WEST VIRGINIA  
 DEPARTMENT OF MINES  
 OIL AND GAS DIVISION  
 CHARLESTON

WELL LOCATION MAP  
 FILE NO. ROA-380-A #1843  
ROA-386-A #1926  
ROA-387-A #1950  
 + Denotes location of well on United States Topographic Maps, scale 1" to 62,500', latitude and longitude lines being represented by border lines as shown.  
 - Denotes one inch spaces on border line of original tracing.

UNITED FUEL GAS COMPANY  
(INCORPORATED)

292

SERIAL WELL NO. 1950

LEASE NO. 19893

MAP SQUARE 88-75

RECORD OF WELL No. 3 on the  
L. D. Boggs. Farm of 102 Acres  
in Geary. District  
Roane. County  
Clendenin. Field, State of W. Va.

CASING AND TUBING		
SIZE	USED IN DRILLING	LEFT IN WELL
16		
13		
10		
8 1-4	500	None.
6 5-8	2040	2040 S. Line.
5 3-16		
4 7-8		
4		
3		
2	2232	2232

TEST BEFORE SHOT  
.....of Water in..... inch  
10ths  
.....of Merc. in..... inch  
10ths  
Volume.....Cu. ft.

TEST AFTER SHOT  
.....of Water in..... inch  
10ths  
.....of Merc. in..... inch  
10ths  
Volume.....Cu. ft.

Rig Commenced May 7, 1928.  
Rig Completed May 14, 1928.  
Drilling Commenced May 16, 1928.  
Drilling Completed July 3, 1928.  
Drilling to cost \$1.75 per foot  
Contractor is: Ramsey & Thompson.  
Address: Charleston, W. Va.

SHUT IN  
Date.....  
.....in Tubing or Casing  
Size of Packer 6-5/8" x 8 1/4" x 10"  
Kind of Packer Parmaco.  
1st Perf. Set.....from.....  
2nd Perf. Set.....from.....

Drillers' Names Dave Morton,  
A. A. Hurley.

DRILLER'S RECORD

6-5/8" casing Run 2061'

FORMATION	TOP	BOTTOM	THICKNESS	REMARKS
Conductor.	06	16	16	
Red Rock.	16	250	234	Top Shot. 2182.
White Slate.	250	300	50	Bottom. 2192
Red Rock.	300	490	190	
Slate.	490	530	40	Oil Pay 2183 - 2191 S. L.
Sand.	530	1300	770	
Black Slate & Shell.	1300	1450	150	Hole full water 1720'
Sand.	1450	1500	50	
Slate.	1500	1510	10	
Salt Sand.	1510	1895	385	
Slate.	1895	1898	3	
Lime.	1898	1912	14	
Red Rock.	1912	1917	5	
Lime.	1917	1963	46	
Little Lime.	1963	1995	32	
Slate.	1995	1996	1	
Sand.	1996	2032	36	
Big Lime.	2032	2175	143	
Big Injun	2175	2191	16	
Broken Slate.	2181	2210	19	
Total Depth.		2210		Steel Line.