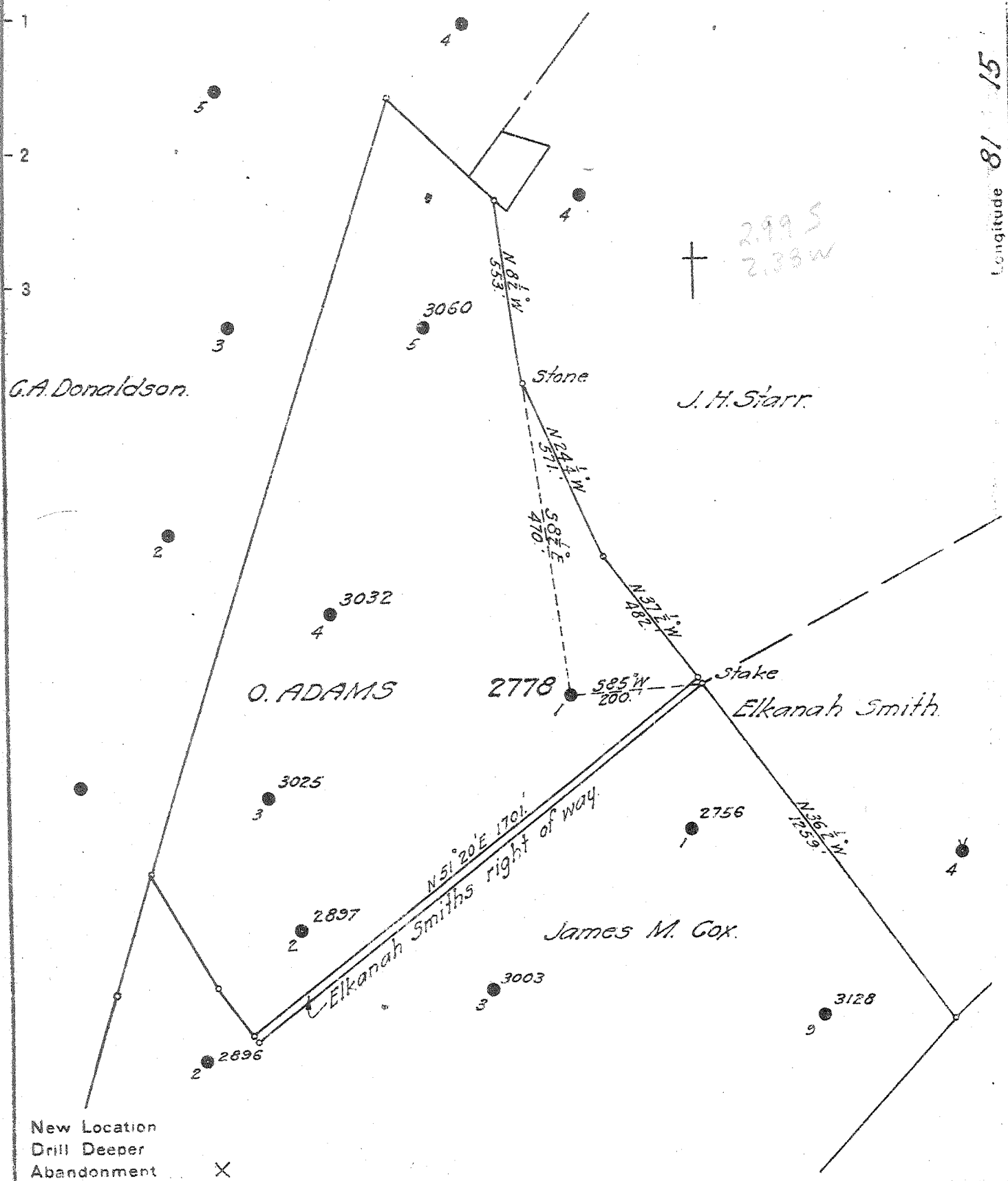


Latitude 38 45

Longitude 81 15



New Location  
 Drill Deeper  
 Abandonment X

Company SUPERIOR PIPE & SUPPLY CO  
 Address GRAND RAPIDS, MICH  
 Farm O ADAMS  
 Tract \_\_\_\_\_ Acres 50 Lease No. 1824  
 Well (Farm) No. 1 Serial No. 2778  
 Elevation Spirit Level 994.0  
 Quadrangle WALTON NE  
 County ROANE District SMITHFIELD  
 Engineer [Signature]  
 Engineer's Registration No. 659  
 File No. 80-83 Drawing No. \_\_\_\_\_  
 Date May 3, 1945 Scale 1" = 400'

STATE OF WEST VIRGINIA  
 DEPARTMENT OF MINES  
 OIL AND GAS DIVISION  
 CHARLESTON

WELL LOCATION MAP  
 FILE NO. ROA-410-A

+ Denotes location of well on United States Topographic Maps, scale 1" = 62,500', latitude and longitude lines being represented by border lines as shown.

- Denotes one inch spaces on border line of original tracing.

Smithfield District, Roane County, W. Va.

By The Ohio Fuel Oil Co.

Rig commenced Sept. 7, 1910, and completed Sept. 13, 1910.

Drilling commenced Oct. 4, 1910, and completed Dec. 15, 1910.

Contractor, Fratt Drilling Co., Charleston, W. Va.

Conductor, 16'.

Well shot Dec. 14, 1910, with 40 qts.

6-5/8" casing, threads 16' 7".

Examined and approved by E. H. Lange, Foreman.

Copied from Record Books of The Ohio Fuel Oil Co., by C. E. Krebs,

Nov. 10, 1911.

	Top.	Bottom.	Thickness.
Conductor	0	- 16	16
Sand	16	- 20	4 $\frac{1}{2}$
<b>Slate</b>	20	- 80	60
Sand	80	- 160	80
Slate and lime shell	160	- 225	65
Red rock and lime shell	225	- 750	525
Red rock	750	- 770	20
Sand	770	- 855	85
Big Dunkard Sand	855	- 980	125
Sand and slate	980	- 1570	590
Salt Sand	1570	- 1822	252
Maxton Sand	1822	- 1847	25
Little Lime	1847	- 1882	35
Pencil Cave	1882	- 1890	8
Big Lime	1890	- 2005	115
Big Injun Sand	2005	- 2051	46
Total depth		2055	

# OHIO FUEL OIL CO. UNITED FUEL GAS COMPANY

UFG 2778  
9-50 198  
Map 591. 80-83

Lease No. \_\_\_\_\_  
 RECORD of Well No. #1 on Shyldon Farm Acres \_\_\_\_\_  
 Field S-4 District Paul County \_\_\_\_\_  
 Rig Commenced Sept 7 1910 Completed Sept 13 1910  
 Drilling Commenced \_\_\_\_\_ Completed Sept 10 1910  
 Cost per foot \_\_\_\_\_ Contractor Pratt Drilling Co. Address Paris, Ind.  
 Drillers' Names J. M. Johnson and L. S. Hall

### CONDUCTOR AND CASING USED IN DRILLING

Conductor	13 inch	10 inch	8 1/2 inch	8 inch	7 1/2 inch	6 3/4 inch	6 1/2 inch	5 1/2 inch	5 1/4 inch	4 1/2 inch
16		275		190		1990				

### CONDUCTOR AND CASING LEFT IN WELL

Conductor	13 inch	10 inch	8 1/2 inch	8 inch	7 1/2 inch	6 3/4 inch	6 1/2 inch	5 1/2 inch	5 1/4 inch	4 1/2 inch
16						1920				

### OIL WELL

### GAS WELL

When Shot	Size of Taps	1st Day Production	Tubing	Rods	Size of Packer	Depth Set	Tubing	1st Minute Pressure	Rock Pressure
See 14	40	25							

FORMATION	TOP	BOTTOM	THICKNESS	REMARKS
Conductor		16		
Sand	16	20	4	
Slaty	20	80	60	
Sand	80	160	80	
Slaty & Lime shell	160	225	65	
R.R. "	225	750	525	
Red Rock	750	770	20	
Sand	770	855	85	
Big Shankard	855	780	125	
Sand & Slaty	780	1570	590	
Salt Sand	1570	1822	252	
Merom	1822	1847	25	
Little Lince	1847	1872	25	
Percol Cave	1872	1890	18	
Big Lince	1890	2005	115	
Impure Sand	2005	2055	46	
Bot Hole	2055			

6 3/4" Casing Threads  
16 7"

0

319

OFA-410-A

JUN 27 1913

Examined and Approved by E. P. Large Foreman.

NOTE.—The above blank must be filled out carefully by the Contractor with a complete and accurate record of the Well and accom-pany, when presented for payment, the bill for drilling  
 All formations and known sands must be given their proper name, and under head of "Remarks" must be reported in what sand and at what depth Oil, or Water was found, the quantity of same, the quality of the sand, and the thickness of pay.