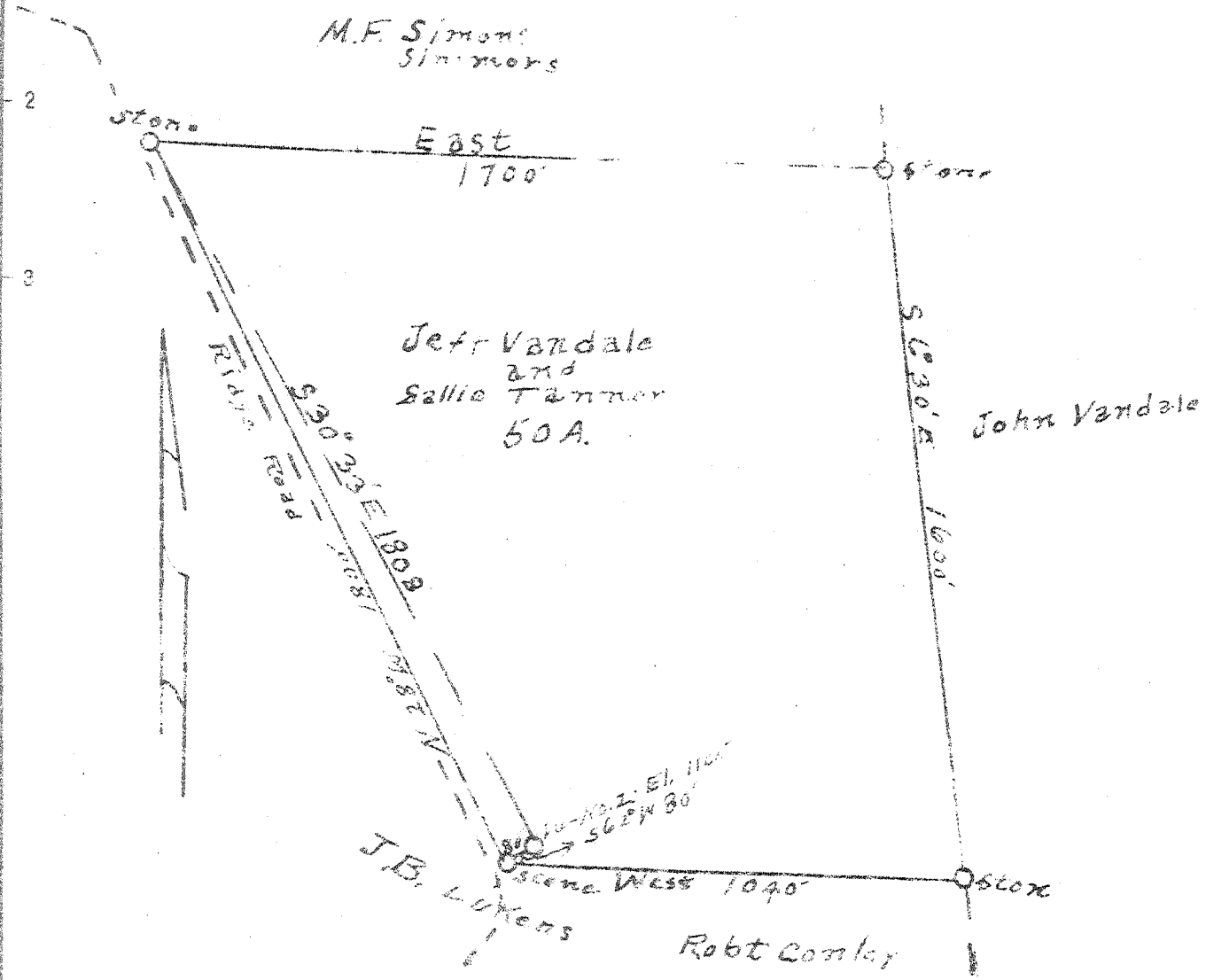


Latitude 38 55

+ 0.755
2.72 W

Longitude 81 15



New Location
 Drill Deeper
 Abandonment X

Company AD BARNES
 Address WESTON, WVA.
 Farm Jeff Vandale & Sallie Tanner
 Tract _____ Acres 50 Lease No. _____
 Well (Farm No. 2 Serial No. _____
 Elevation (Spirit Level) 1100'
 Quadrangle SPENCER
 County ROANE District SPENCER
 Engineer J.E. Anderson, Wood County
 Engineer's Registration No. Surveyor
 File No. _____ Drawing No. _____
 Date 7-16-46 Scale 1 in = 400'

STATE OF WEST VIRGINIA
 DEPARTMENT OF MINES
 OIL AND GAS DIVISION
 CHARLESTON

WELL LOCATION MAP
 FILE NO. ROA-457-A
 See microfilm for well record
 + Denotes location of well on United States Topographic Maps, scale 1 to 62 500, latitude and longitude lines being represented by border lines as shown.
 - Denotes one inch spaces on border line of original tracing.