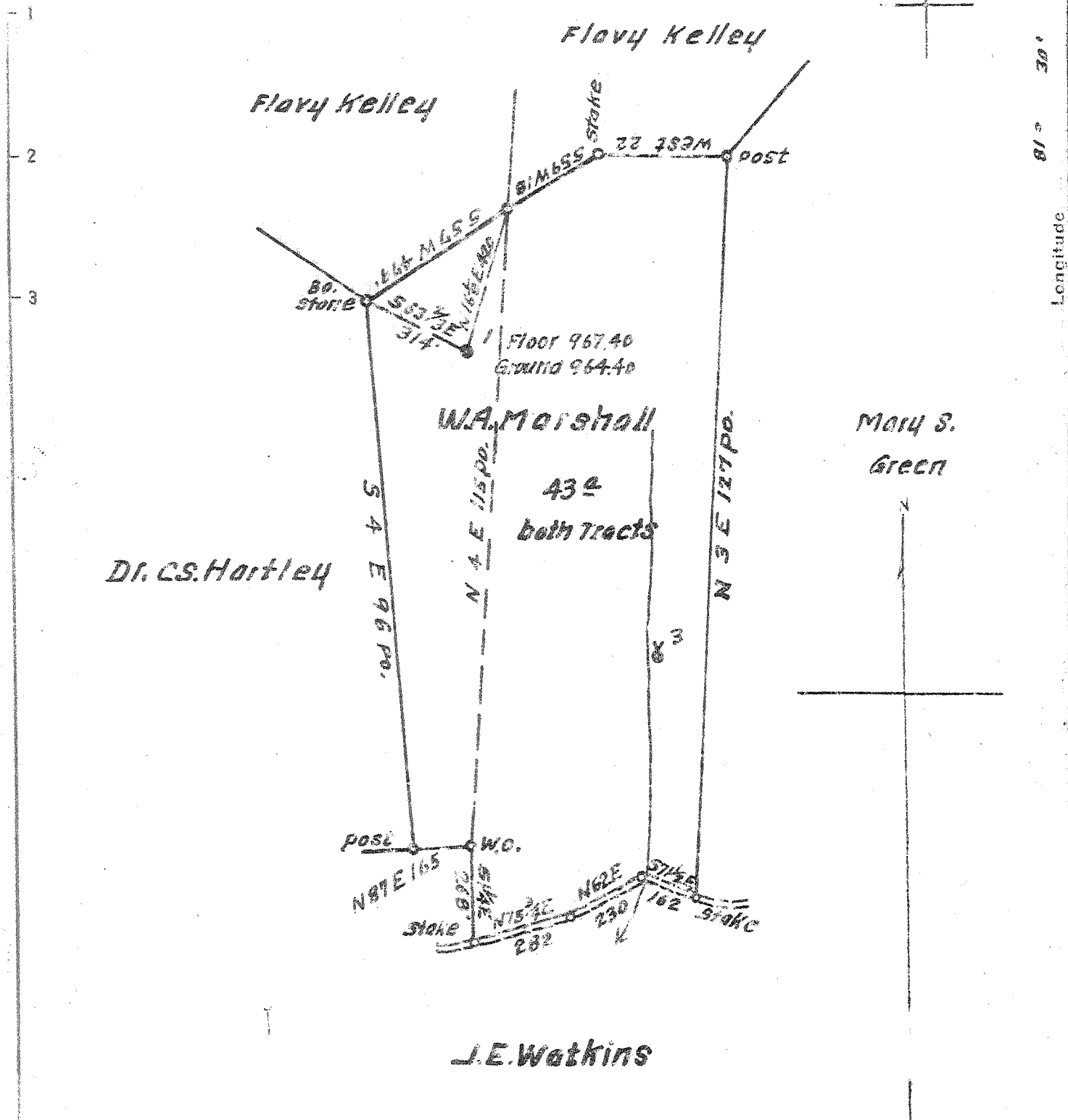


15'
1.125
1.000



Dr. CS. Hortley

W.A. Marshall
43^a
both tracts

Mary S.
Green

J.E. Watkins

New Location
Drill Deeper
Abandonment

Map 30
36S. 50³ 51W.

Company	R.R. Kelly		
Address	Parkersburg, W.Va.		
Farm	W.A. Marshall		
Tract	Acres	Lease No.	
Well (Farm) No.	1.	Serial No.	
Elevation (Spirit Level)	Ground 964.40		
Quadrangle	Ripley		
County	Roane	District	Reedy
Engineer	Mr. S. Hayes		
Engineer's Registration No.	1424		
File No.	Drawing No.		
Date	Apr. 16, 1948, Scale 1 in. = 400 ft.		

STATE OF WEST VIRGINIA
DEPARTMENT OF MINES
OIL AND GAS DIVISION
CHARLESTON

See microfilm for well record
WELL LOCATION MAP
FILE NO. ROA-503-A

✳ Denotes location of well on United States Topographic Maps, scale 1 to 62,500, latitude and longitude lines being represented by border lines as shown.

— Denotes one inch spaces on border line of original tracing.