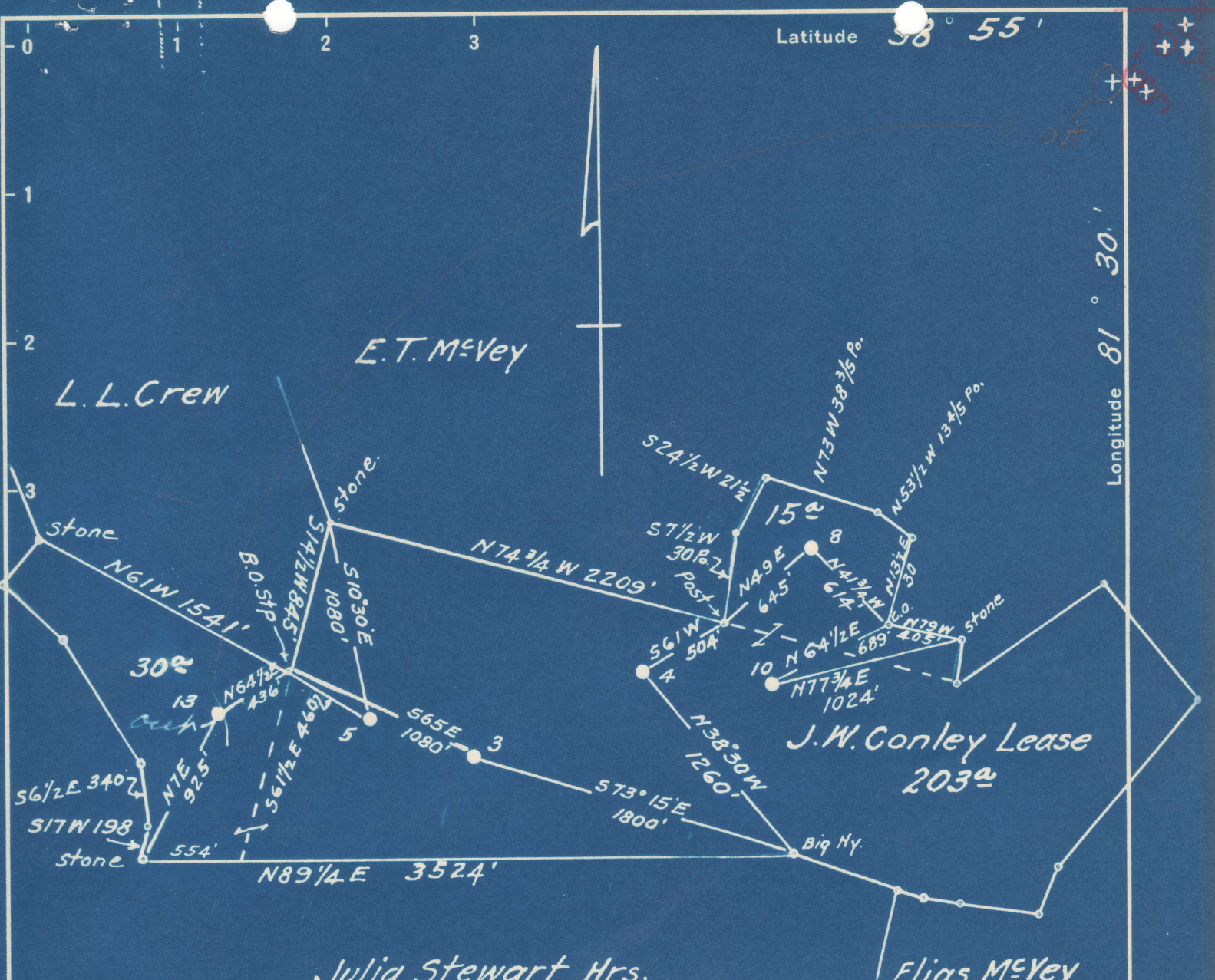


Latitude 38° 55'

Longitude 81° 30'



No Coal

Surface: R.D. & W.E. Young
Route No. 2.

0.56 S Reedy, W.Va.
4,413 W of 81°25'

0.22 S	# 8	0.09 S	with stream
4,220 W of 81°25'		0.41 W of 81°25'	

0.47 S	# 10	0.25 S
4,400 W of 81°25'		0.42 W of 81°25'

Elevations.

- 3 = 980.00
- 4 = 799.70
- 5 = 856.50
- 8 = 947.50
- 10 = 785.10
- 13 = 855.80

New Location
 Drill Deeper
 Abandonment 3-4-5-8-10-13

536 W 49-50.

Company A.R. Kelly
 Address Parkersburg, W.Va.
 Farm J.W. Conley
 Tract _____ Acres _____ Lease No. _____
 Well (Farm) No. See Above Serial No. _____
 Elevation (Spirit Level) See Above
 Quadrangle Spencer & Ripley
 County Roane District Reedy
 Engineer Wm. S. Hayes
 Engineer's Registration No. 1429
 File No. _____ Drawing No. _____
 Date Sept. 2-48 Scale 1" = 800'

STATE OF WEST VIRGINIA
 DEPARTMENT OF MINES
 OIL AND GAS DIVISION
 CHARLESTON

WELL LOCATION MAP

ROA-551-A-#3
 FILE NO. ROA-552-A-#4 (see microfiche)
 ROA-557-A-#10 ROA-555-A-#5
 ROA-556-A-#8

+ Denotes location of well on United States Topographic Maps, scale 1 to 62,500, latitude and longitude lines being represented by border lines as shown.

- Denotes one inch spaces on border line of original tracing.