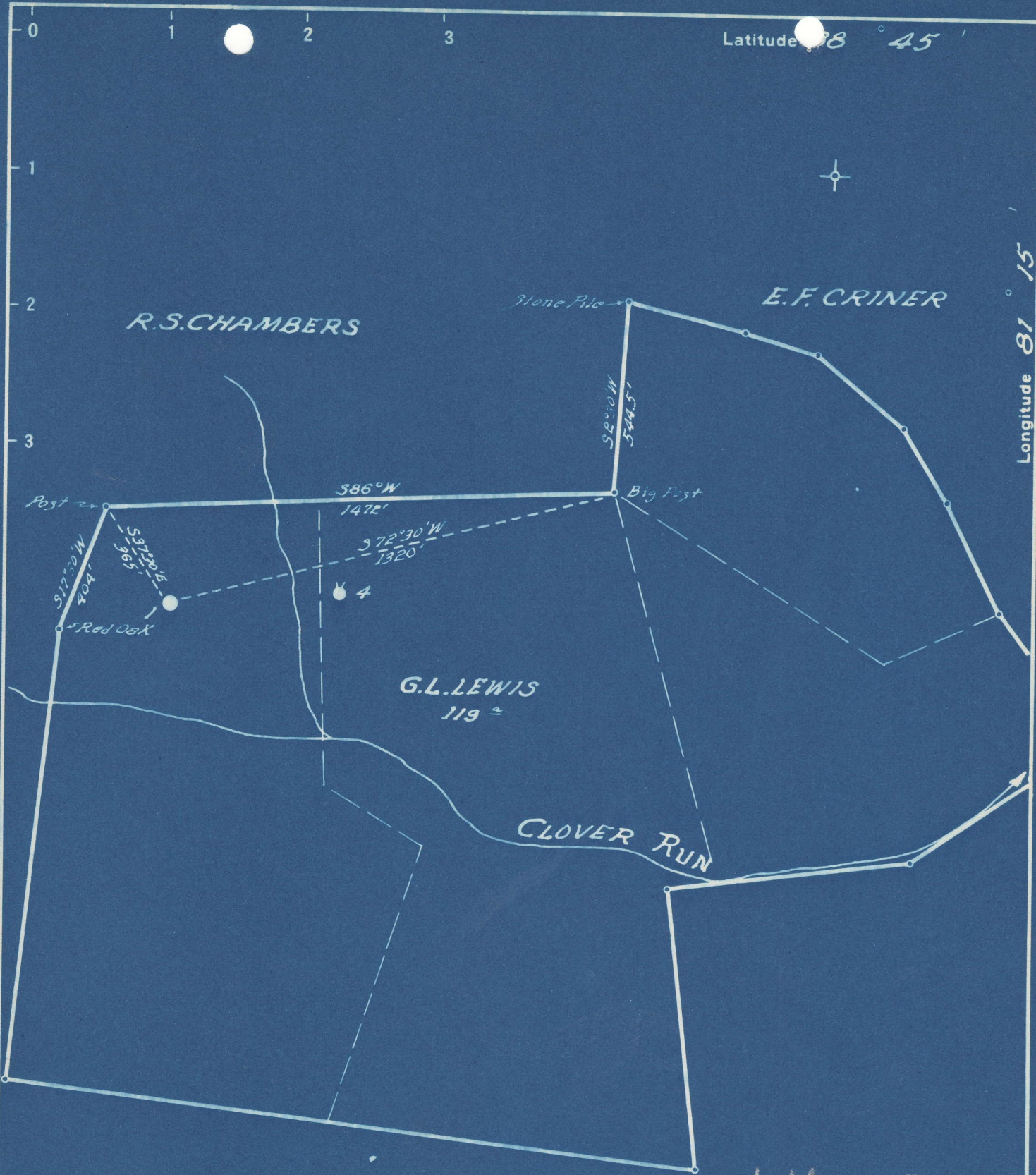


Latitude 38° 45'

Longitude 81° 15'



1.16 S
1.50 W

- New Location
- Drill Deeper
- Abandonment

Company UNITED FUEL GAS CO.
 Address CHARLESTON, W.VA.
 Farm G.L.LEWIS
 Tract _____ Acres 119 Lease No. 6027
 Well (Farm) No. 1 Serial No. _____
 Elevation (Spirit Level) 365.
 Quadrangle WALTON
 County ROANE District SMITHFIELD
 Engineer J.H. MOORE
 Engineer's Registration No. 662
 File No. 80-85 Drawing No. _____
 Date 10-22-48 Scale 1" = 400'

STATE OF WEST VIRGINIA
 DEPARTMENT OF MINES
 OIL AND GAS DIVISION
 CHARLESTON
see Microfilm for Well records
WELL LOCATION MAP
 FILE NO. ROA-573-A

+ Denotes location of well on United States Topographic Maps, scale 1 to 62,500, latitude and longitude lines being represented by border lines as shown.

- Denotes one inch spaces on border line of original tracing.