

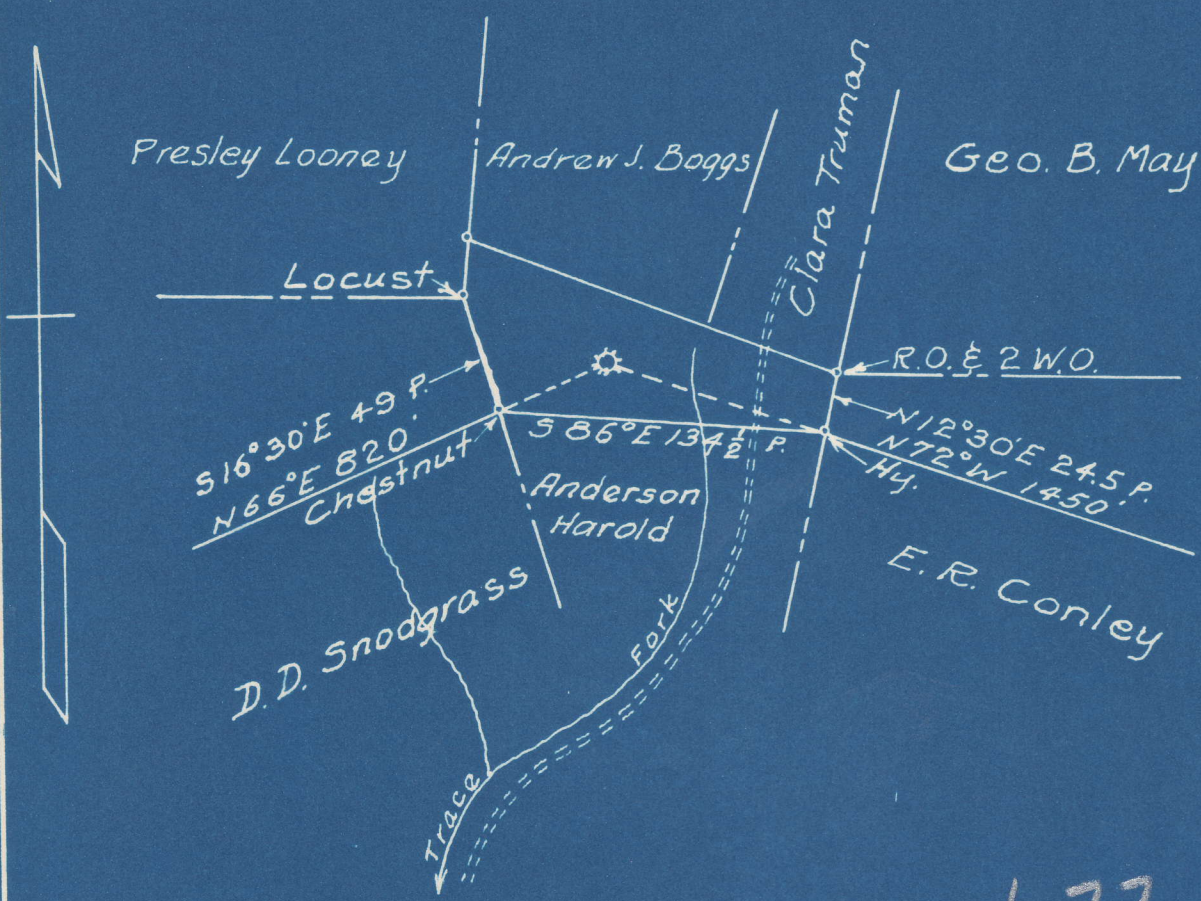
0 1 2 3 Latitude 40'

1

2

3

Longitude 81° 05'



1,77 S  
4,19 W

New Location   
 Drill Deeper   
 Abandonment

Company Godfrey L. Cabot, Inc.  
 Address 900 Union Bldg. Charleston, W. Va.  
 Farm Clara Truman  
 Tract One Acres 44 Lease No. 1-433  
 Well (Farm) No. 1 Serial No. 522  
 Elevation (Spirit Level) 1051'  
 Quadrangle Otter  
 County Roane District Geary  
 Engineer Logan McDonald  
 Engineer's Registration No. 610  
 File No. \_\_\_\_\_ Drawing No. \_\_\_\_\_  
 Date 5-5-45 Scale 1" = 1320'

STATE OF WEST VIRGINIA  
 DEPARTMENT OF MINES  
 OIL AND GAS DIVISION  
 CHARLESTON

see microfilm for well record  
**WELL LOCATION MAP**  
 FILE NO. ROA-591-A

+ Denotes location of well on United States Topographic Maps, scale 1 to 62,500, latitude and longitude lines being represented by border lines as shown.

- Denotes one inch spaces on border line of original tracing.