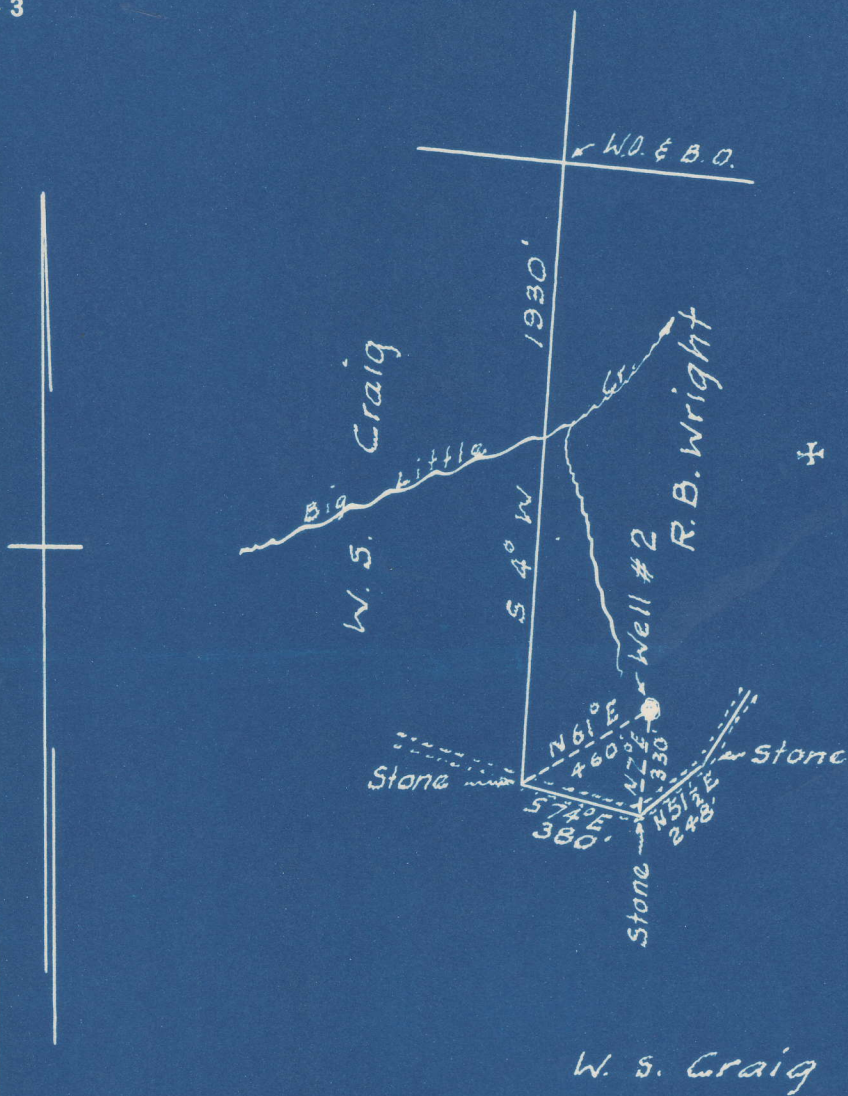


Latitude 38° 55'

Longitude 81° 15'



S 5.48  
W 3.29

New Location   
 Drill Deeper   
 Abandonment

Company Paul Weakley  
 Address Spencer, W.Va.  
 Farm R.B. Wright  
 Tract \_\_\_\_\_ Acres 50 Lease No. \_\_\_\_\_  
 Well (Farm) No. 2 Serial No. \_\_\_\_\_  
 Elevation (Spirit Level) 1067'  
 Quadrangle Spencer  
 County Roane District Spencer  
 Engineer Logan McDonald  
 Engineer's Registration No. 610  
 File No. \_\_\_\_\_ Drawing No. \_\_\_\_\_  
 Date 4-12-50 Scale 1" = 600'

STATE OF WEST VIRGINIA  
 DEPARTMENT OF MINES  
 OIL AND GAS DIVISION  
 CHARLESTON

*see microfilm for well record*  
**WELL LOCATION MAP**  
 FILE NO. ROA-708-A-2

+ Denotes location of well on United States Topographic Maps, scale 1 to 62,500, latitude and longitude lines being represented by border lines as shown.

- Denotes one inch spaces on border line of original tracing.