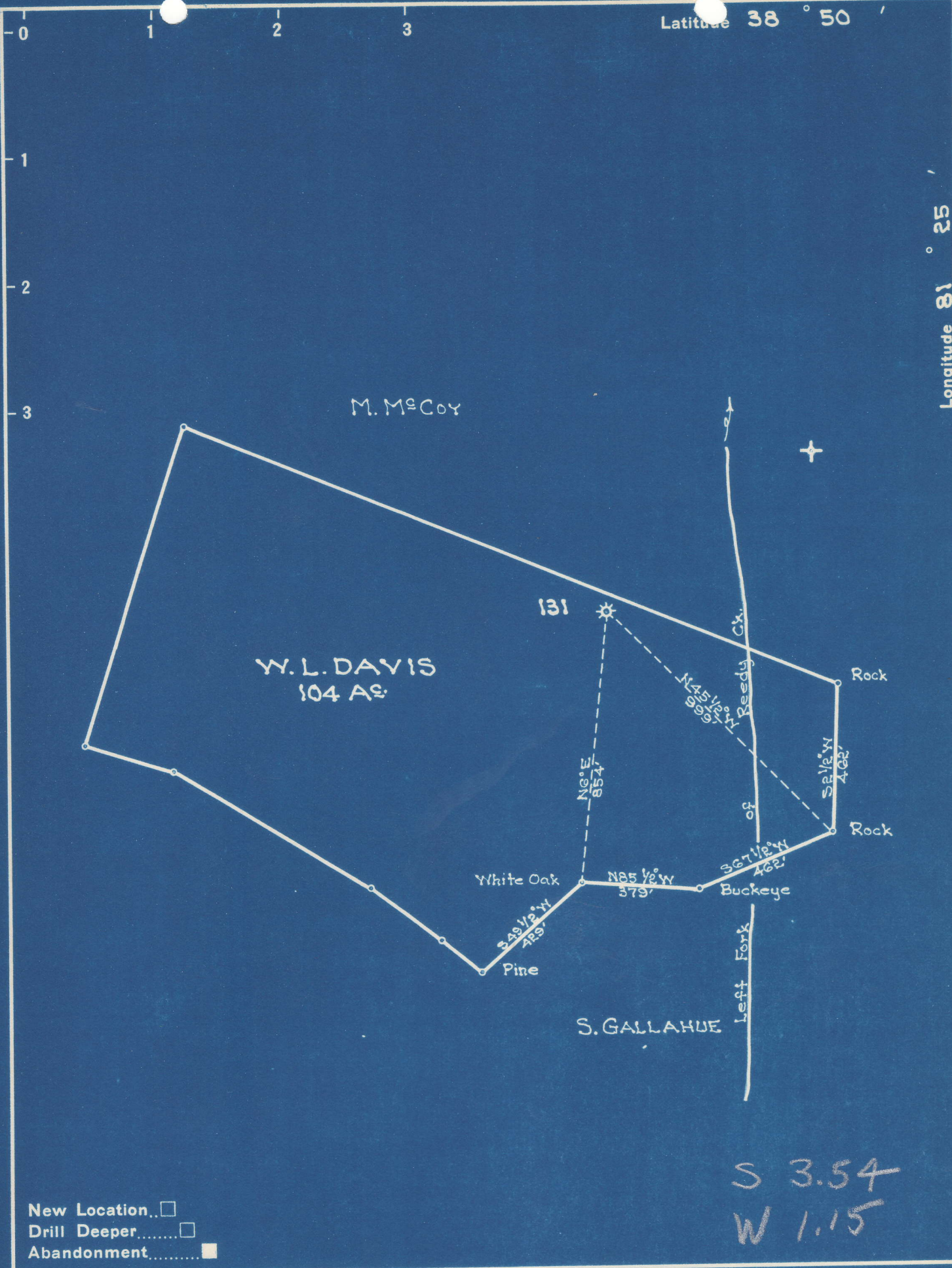


Latitude 38 ° 50

Longitude 81 ° 25



S 3.54  
W 1.15

New Location..   
 Drill Deeper.....   
 Abandonment.....

Company UNITED FUEL GAS CO.  
 Address CHARLESTON, W. VA.  
 Farm W. L. DAVIS  
 Tract \_\_\_\_\_ Acres 104 Lease No. 5402  
 Well (Farm) No. \_\_\_\_\_ Serial No. 131  
 Elevation (Spirit Level) 861.7  
 Quadrangle SPENCER SW  
 County ROANE District CURTIS  
 Engineer [Signature]  
 Engineer's Registration No. 662  
 File No. 72-89 Drawing No. \_\_\_\_\_  
 Date 7-24-50 Scale 1"=400'

STATE OF WEST VIRGINIA  
 DEPARTMENT OF MINES  
 OIL AND GAS DIVISION  
 CHARLESTON  
*See microfilm for well record*  
**WELL LOCATION MAP**  
 FILE NO. ROA-710-A

+ Denotes location of well on United States Topographic Maps, scale 1 to 62,500, latitude and longitude lines being represented by border lines as shown.  
 - Denotes one inch spaces on border line of original tracing.