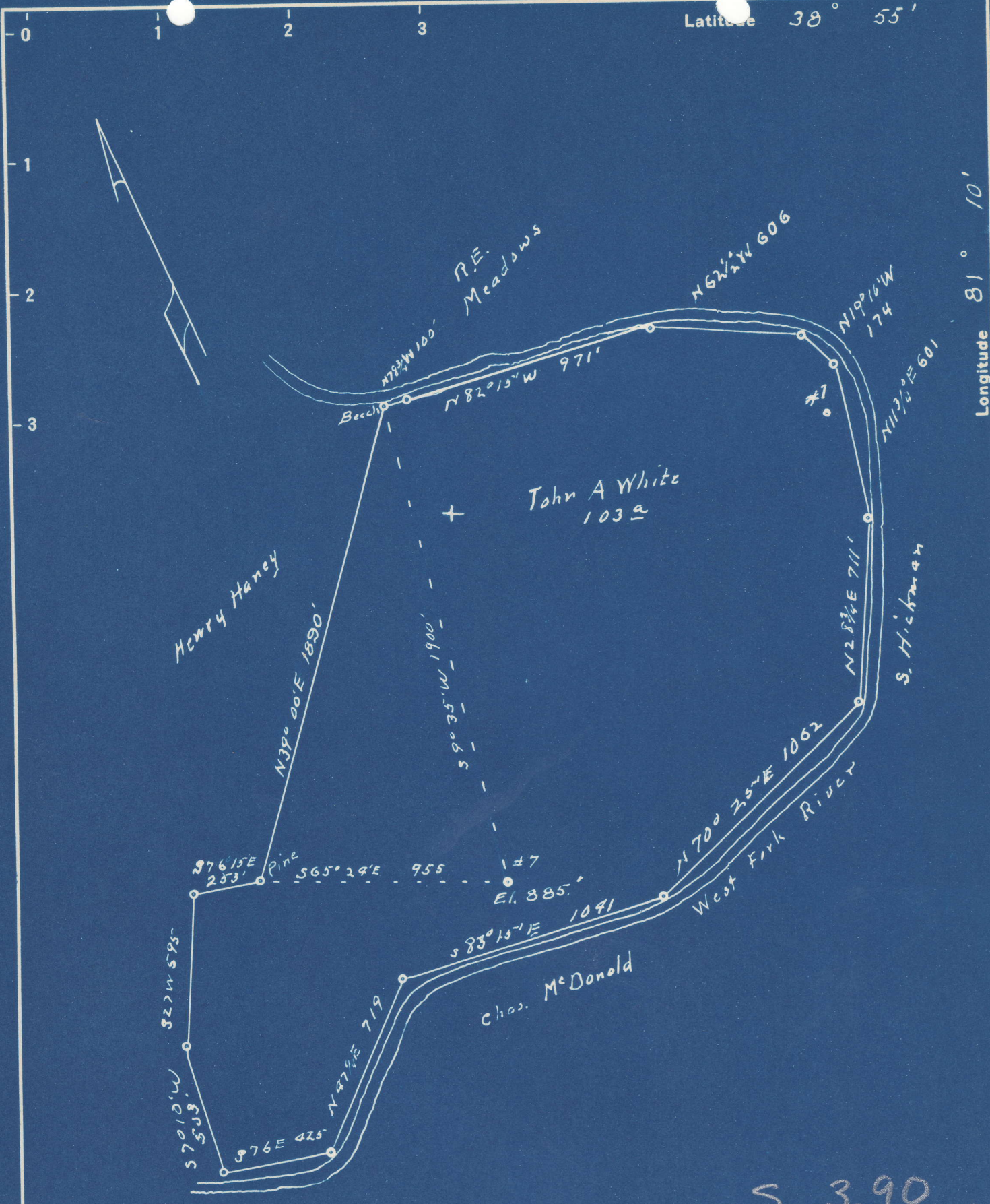


Latitude 38° 55'

Longitude 81° 10'



S 3.90
W 4.20

New Location
 Drill Deeper
 Abandonment

Company Pierson, Smith, Feicht & Kirkbride
 Address RR 2, Walker W.Va.
 Farm John A White
 Tract _____ Acres 103 Lease No. _____
 Well (Farm) No. 7 Serial No. _____
 Elevation (Spirit Level) 885'
 Quadrangle Arnoldsburg
 County Roane District Spencer
 Engineer O. Meredith
 Engineer's Registration No. _____
 File No. _____ Drawing No. _____
 Date _____ Scale 1 in = 500'

STATE OF WEST VIRGINIA
 DEPARTMENT OF MINES
 OIL AND GAS DIVISION
 CHARLESTON
see microfilm for well record
WELL LOCATION MAP
 FILE NO. ROA-711-A

+ Denotes location of well on United States Topographic Maps, scale 1 to 62,500, latitude and longitude lines being represented by border lines as shown.

- Denotes one inch spaces on border line of original tracing.