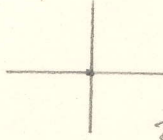


LATITUDE 38° 45'



3.70 W  
2.37 S

LONGITUDE 91° 15'

7.5 OGIS topo location

7.5' loc \_\_\_\_\_  
\_\_\_\_\_

15' loc \_\_\_\_\_  
(calc.) \_\_\_\_\_

Company \_\_\_\_\_

Farm \_\_\_\_\_

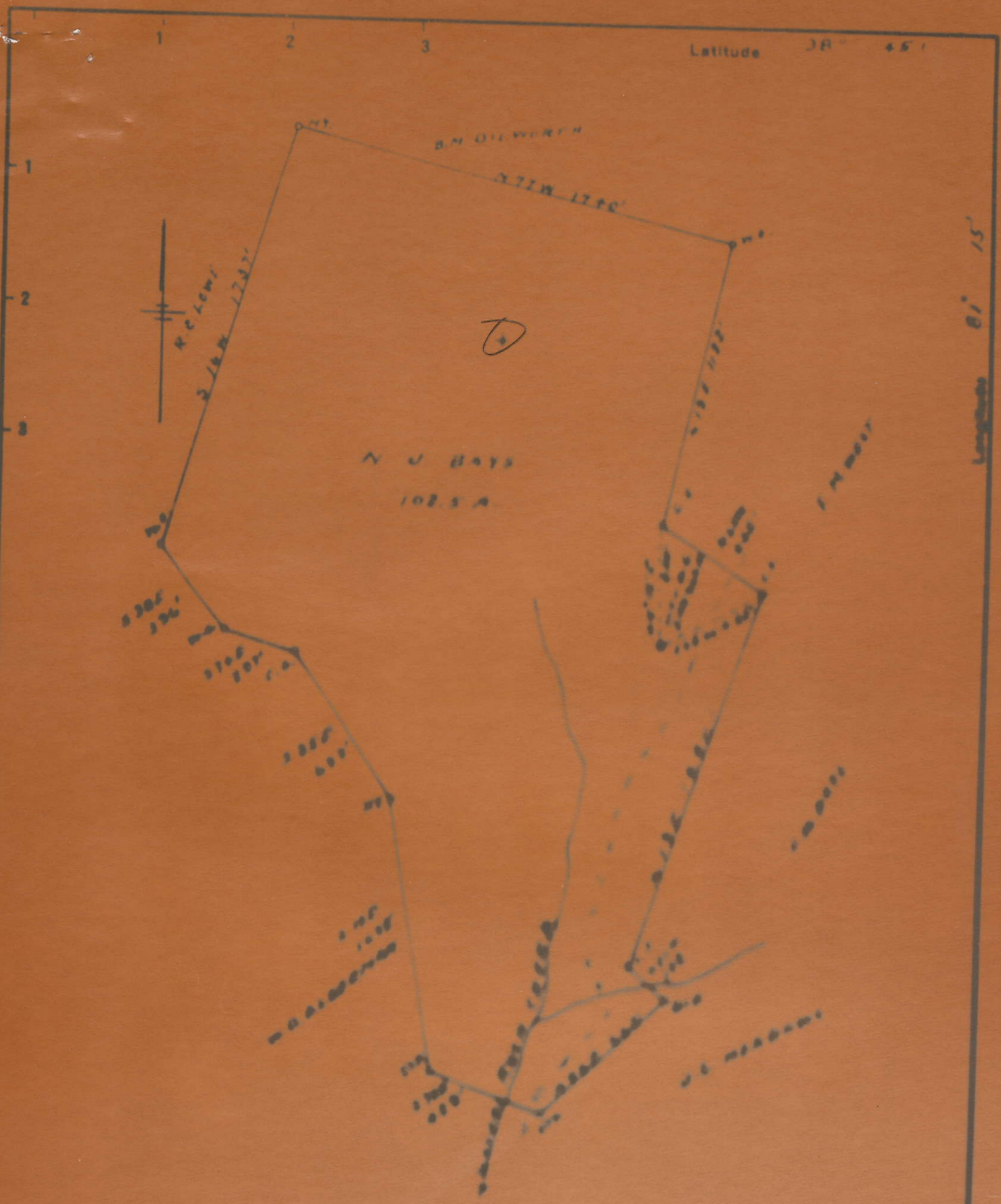
Quad Walton (NE)

County Roane

District Smithfield

WELL LOCATION MAP

File No. 087-7614



New Location   
 Drill Deeper   
 Abandonment

761A

Company WELLS FARGO CORP.  
 100 CENTENNIAL AVE  
 Address HICKESPORT, PA.  
 Farm N. U. BAYS  
 Tract \_\_\_\_\_ Acres 102.5

STATE OF WEST VIRGINIA  
 DEPARTMENT OF MINES  
 OIL AND GAS DIVISION  
 CHARLESTON

BAYS, N. J., NO. 4.

Roa-761-A.

By Weston-Spencer Corp.

Smithfield Dist.

~~(NO PLAT)~~ Plat on microfilm