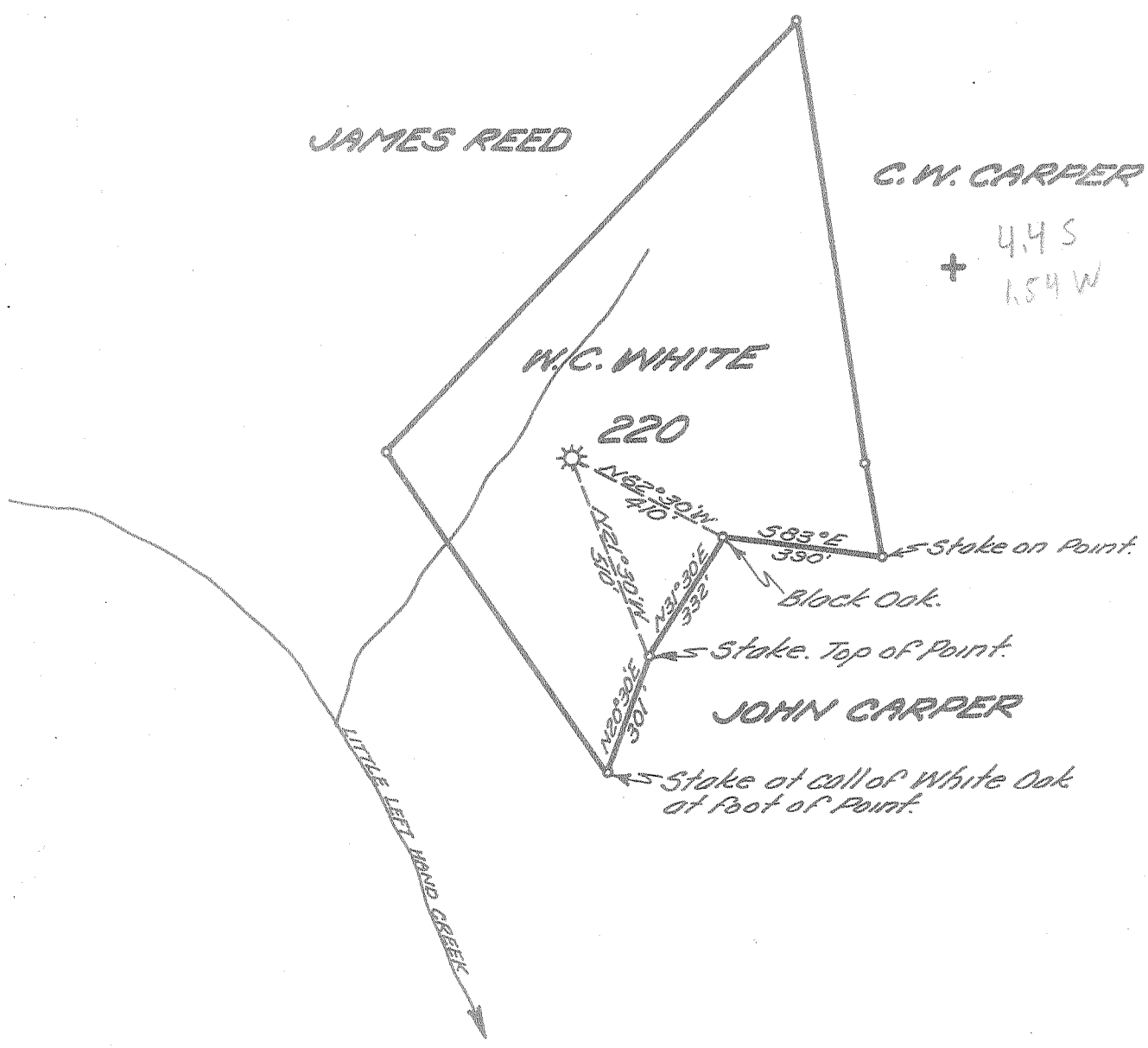


1 2 3

Latitude $38^{\circ} 40'$

Longitude $81^{\circ} 15'$



New Location...
 Drill Deeper.....
 Abandonment.....

Company UNITED FUEL GAS CO.
 Address CHARLESTON, W. VA.
 Farm W.C. WHITE
 Tract _____ Acres 25 Lease No. 5484
 Well (Farm) No. _____ Serial No. 220
 Elevation (Spirit Level) 880' B.
 Quadrangle WALTON
 County ROANE District GEARY
 Engineer Seybert R Jewell
 Engineer's Registration No. 2529
 File No. 80-75 Drawing No. _____
 Date 5-21-54 Scale 1" = 400'

STATE OF WEST VIRGINIA
 DEPARTMENT OF MINES
 OIL AND GAS DIVISION
 CHARLESTON

see microfiche for well Record
WELL LOCATION MAP
 FILE NO. ROA-836-A

+ Denotes location of well on United States Topographic Maps, scale 1 to 62,500, latitude and longitude lines being represented by border lines as shown.

- Denotes one inch spaces on border line of original tracing.