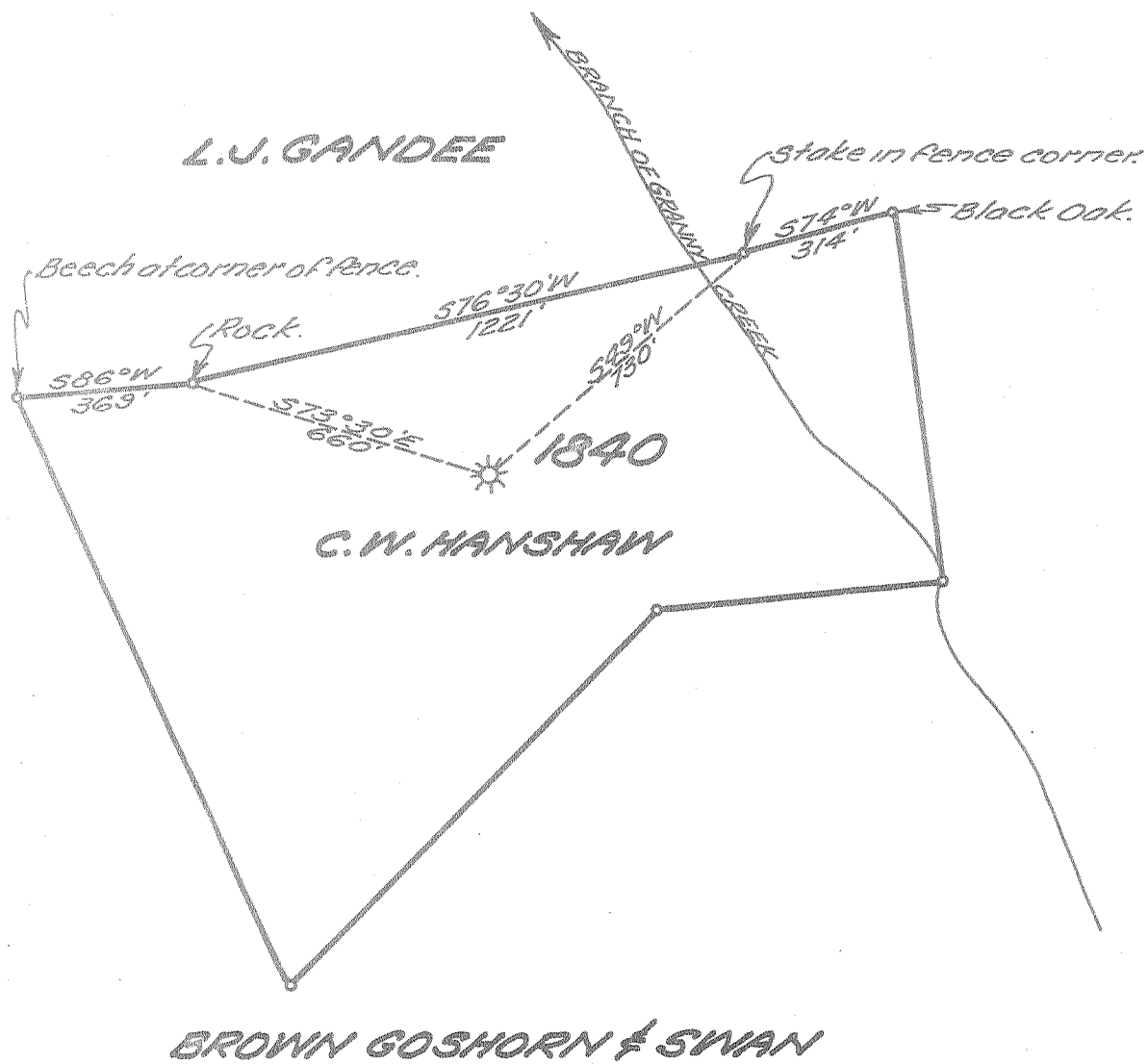


Latitude $38^{\circ}35'$

Longitude $81^{\circ}18'$

2.13 S +
6.37 W



New Location
 Drill Deeper
 Abandonment

Company UNITED FUEL GAS CO.
 Address CHARLESTON, W. VA.
 Farm C.W. HANSHAW
 Tract _____ Acres 37 Lease No. 12027
 Well (Farm) No. _____ Serial No. 1840
 Elevation (Spirit Level) 970'
 Quadrangle OTTER
 County ROANE District GEARY
 Engineer Leybert R. Ferrell
 Engineer's Registration No. 2529
 File No. 86-73 Drawing No. _____
 Date 5-21-54 Scale 1" = 400'

STATE OF WEST VIRGINIA
 DEPARTMENT OF MINES
 OIL AND GAS DIVISION
 CHARLESTON
 see microfilm for well Record
WELL LOCATION MAP
 FILE NO. ROA-837-A

+ Denotes location of well on United States' Topographic Maps, scale 1 to 62,500, latitude and longitude lines being represented by border lines as shown.
 - Denotes one inch spaces on border line of original tracing.