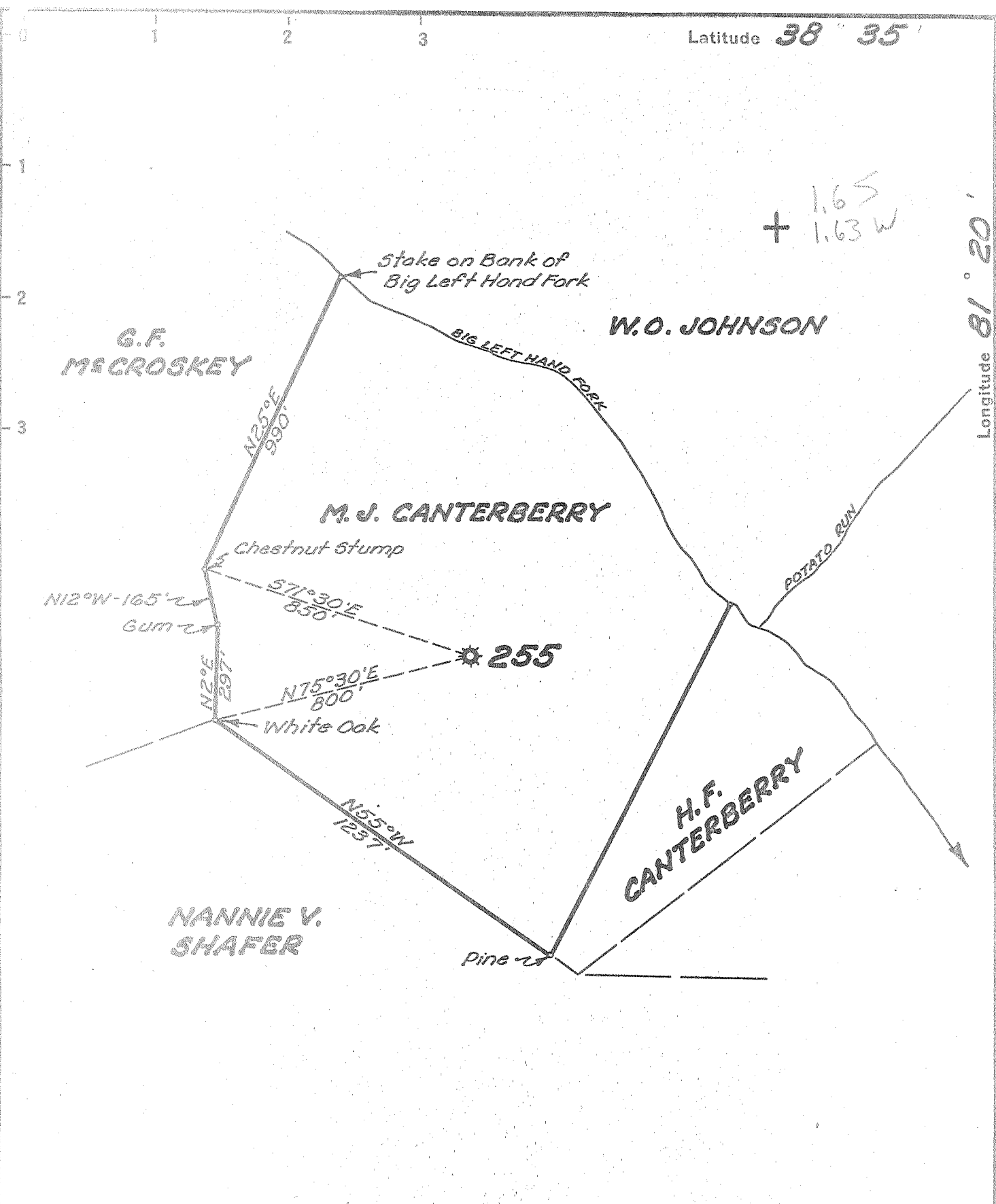


Latitude 38° 35'

Longitude 81° 20'

+ 1.65
1.63 W



New Location
 Drill Deeper
 Abandonment

Company UNITED FUEL GAS CO.
 Address CHARLESTON, W.VA.
 Farm M.J. CANTERBERRY
 Tract _____ Acres 53 1/4 Lease No. 7141
 Well (Farm) No. _____ Serial No. 255
 Elevation (Spirit Level) 830.6'
 Quadrangle WALTON SC
 County ROANE District WALTON
 Engineer Seybert R. Herrell
 Engineer's Registration No. 2529
 File No. 76-73 Drawing No. _____
 Date 7-22-54 Scale 1"=400'

STATE OF WEST VIRGINIA
 DEPARTMENT OF MINES
 OIL AND GAS DIVISION
 CHARLESTON

See microfilm for well record
WELL LOCATION MAP
 FILE NO. ROA-858-A

+ Denotes location of well on United States Topographic Maps, scale 1 to 62,500, latitude and longitude lines being represented by border lines as shown.
 - Denotes one inch. spaces on border line of original tracing.