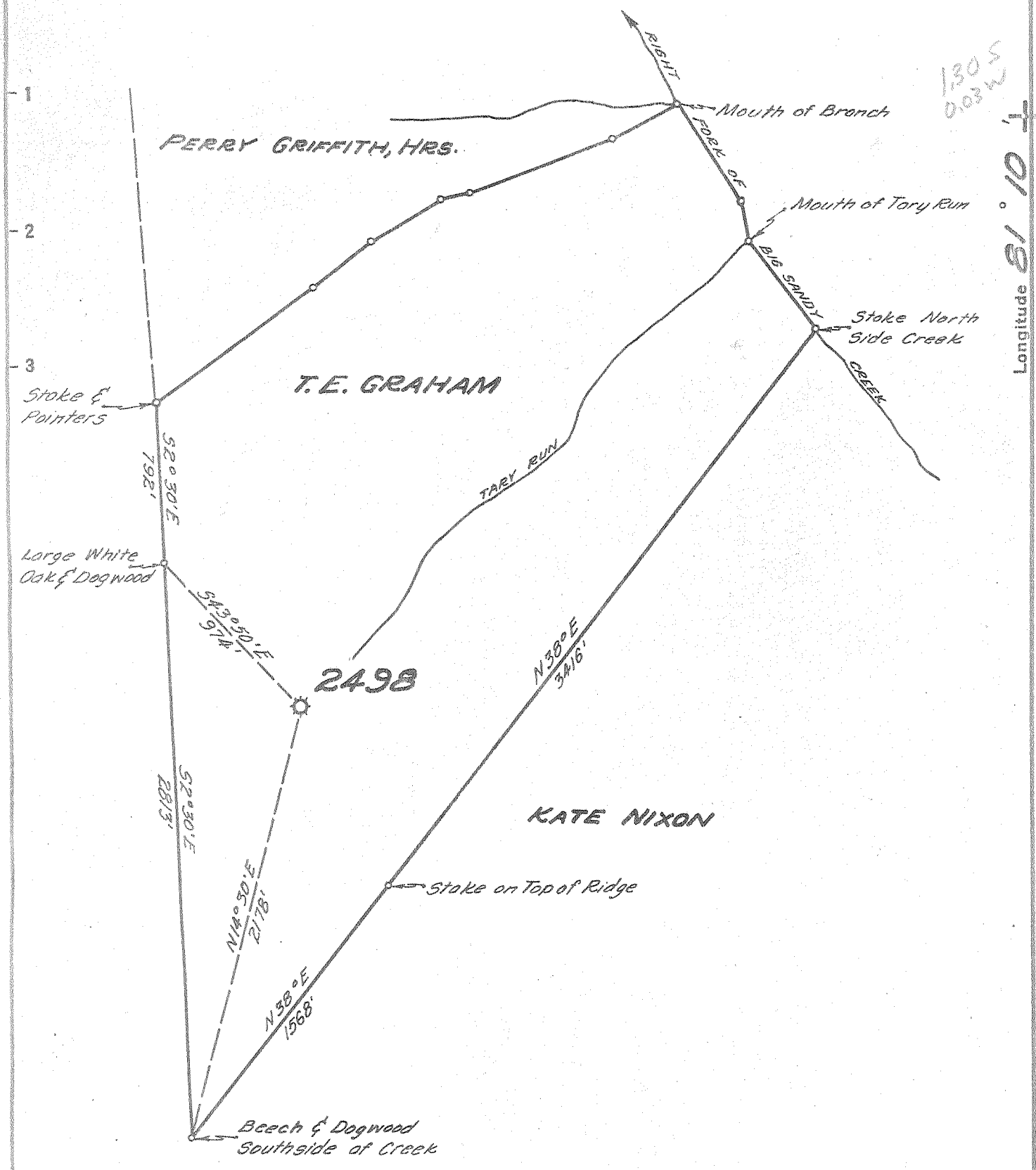


Latitude  $38^{\circ} 35'$

130.5  
0.03 W

Longitude  $81^{\circ} 10'$



- New Location..
- Drill Deeper.....
- Abandonment.....

Company UNITED FUEL GAS CO  
 Address CHARLESTON, W. VA.  
 Farm T.E. GRAHAM  
 Tract \_\_\_\_\_ Acres 277 Lease No. 16705  
 Well (Farm) No. 1 Serial No. 2498  
 Elevation (Spirit Level) 940.0'  
 Quadrangle OTTER  
 County ROANE District GEARY  
 Engineer Seybert R. Sturvell  
 Engineer's Registration No. 2529  
 File No. 86-73 Drawing No. \_\_\_\_\_  
 Date 8-18-54 Scale 1"=660'

STATE OF WEST VIRGINIA  
 DEPARTMENT OF MINES  
 OIL AND GAS DIVISION  
 CHARLESTON

see microfilm for well record  
**WELL LOCATION MAP**  
 FILE NO. ROA-875-A

+ Denotes location of well on United States Topographic Maps, scale 1 to 62,500, latitude and longitude lines being represented by border lines as shown.  
 - Denotes one inch spaces on border line of original tracing.