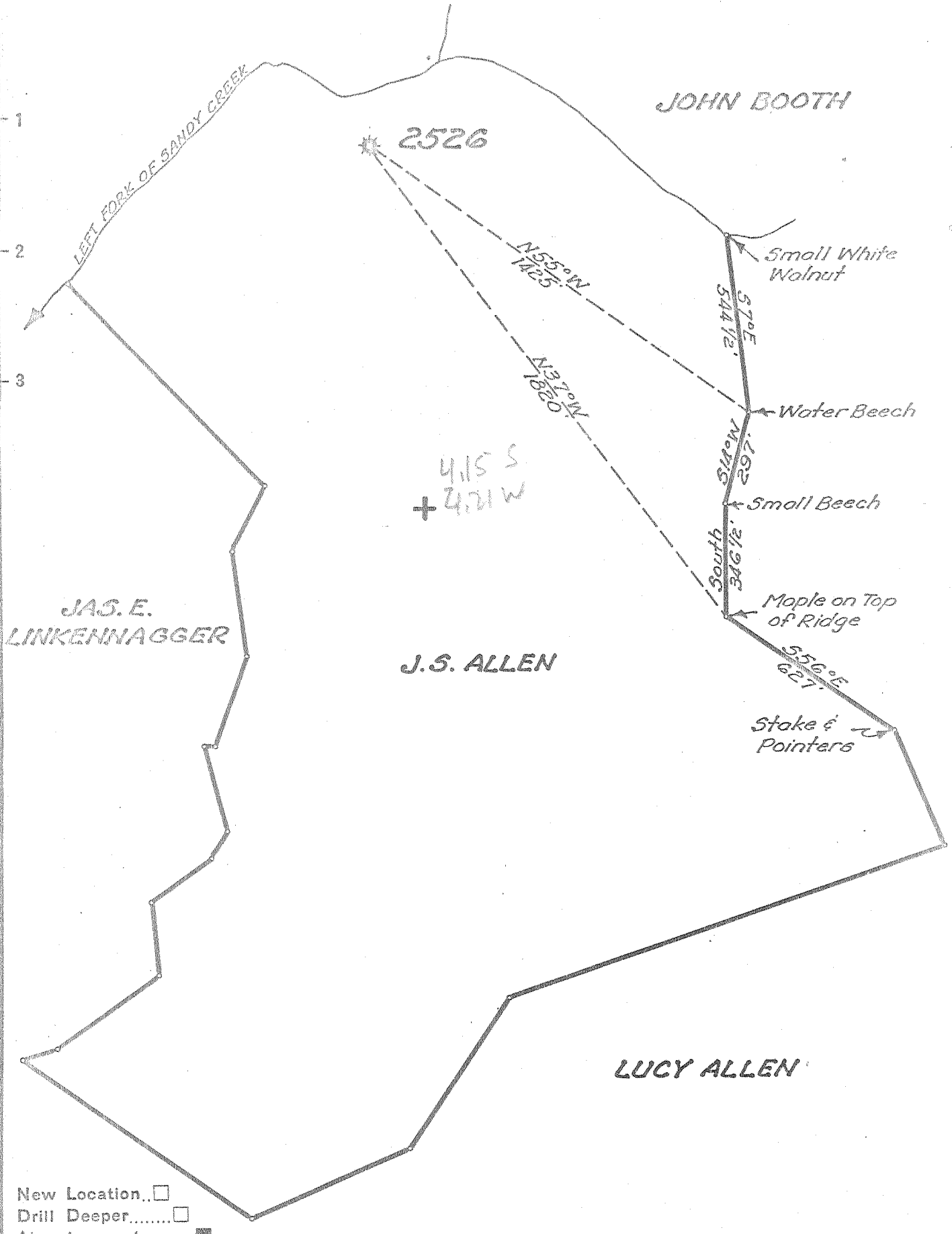


Latitude  $38^{\circ} 40'$

Longitude  $81^{\circ} 05'$



- New Location
- Drill Deeper
- Abandonment

Company UNITED FUEL GAS CO.  
 Address CHARLESTON, W.VA.  
 Farm J.S. ALLEN  
 Tract \_\_\_\_\_ Acres 113 1/4 Lease No. 16367  
 Well (Farm) No. 2 Serial No. 2526  
 Elevation (Spirit Level) 812.0'  
 Quadrangle OTTER  
 County ROANE District GEARY  
 Engineer Paul C. Joachim  
 Engineer's Registration No. 669  
 File No. 86-77 Drawing No. \_\_\_\_\_  
 Date 8-20-54 Scale 1"=400'

STATE OF WEST VIRGINIA  
 DEPARTMENT OF MINES  
 OIL AND GAS DIVISION  
 CHARLESTON

see microfilm for well record  
**WELL LOCATION MAP**  
 FILE NO. ROA-876-A

- + Denotes location of well on United States Topographic Maps, scale 1 to 62,500, latitude and longitude lines being represented by border lines as shown.
- Denotes one inch spaces on border line of original tracing.