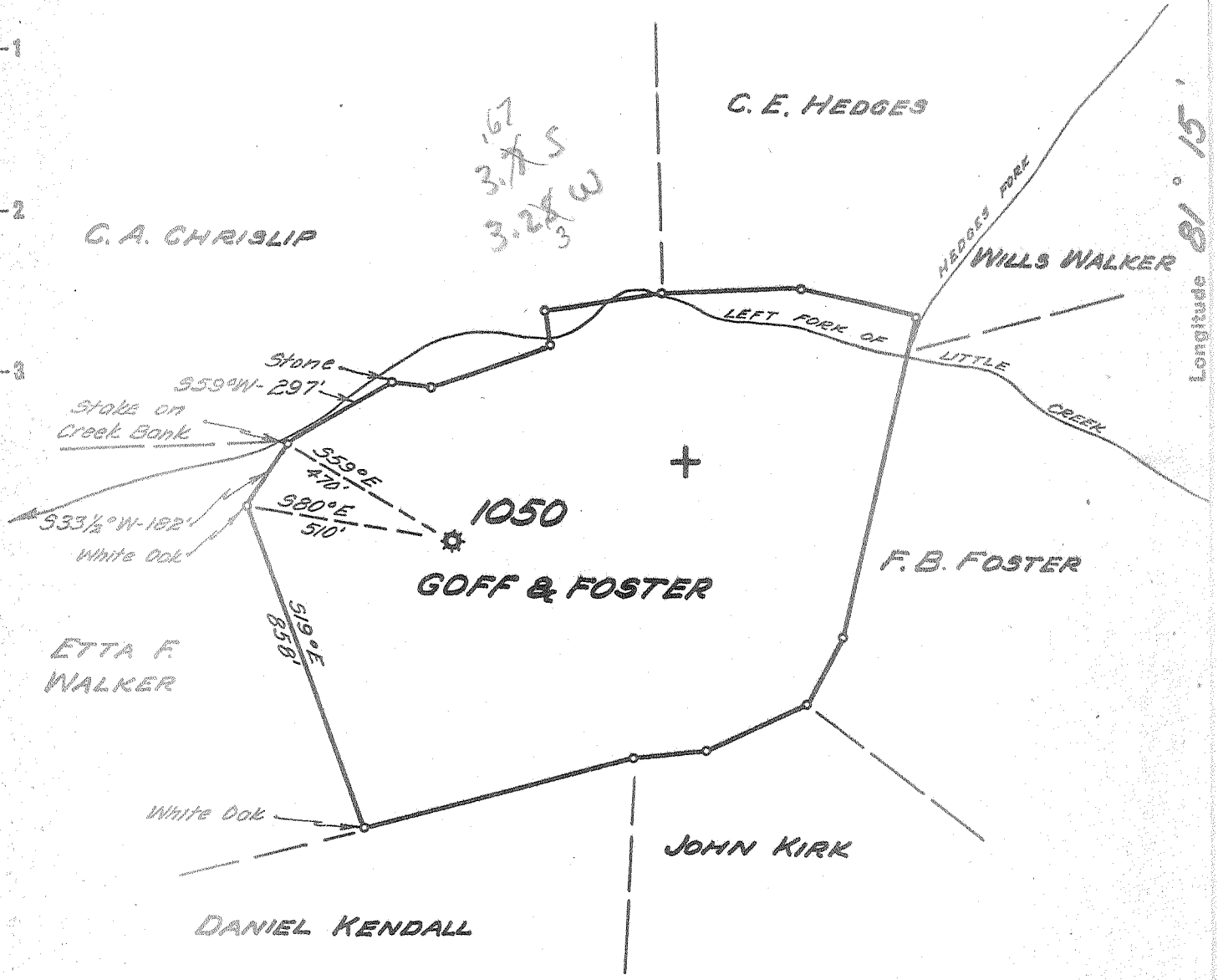


Latitude  $38^{\circ} 35'$

Longitude  $81^{\circ} 15'$



New Location   
 Drill Deeper   
 Abandonment

Company UNITED FUEL GAS CO.  
 Address CHARLESTON, W.VA.  
 Farm GOFF & FOSTER  
 Tract \_\_\_\_\_ Acres 23 Lease No. 8209  
 Well (Farm) No. \_\_\_\_\_ Serial No. 1050  
 Elevation (Spirit Level) 868.6  
 Quadrangle SPENCER  
 County ROANE District SPENCER  
 Engineer Paul E. Baduino  
 Engineer's Registration No. 669  
 File No. 78-93 Drawing No. \_\_\_\_\_  
 Date 12-30-54 Scale 1"=400'

STATE OF WEST VIRGINIA  
 DEPARTMENT OF MINES  
 OIL AND GAS DIVISION  
 CHARLESTON

**WELL LOCATION MAP**  
 FILE NO. ROA-909-A

+ Denotes location of well on United States Topographic Maps, scale 1 to 62,500, latitude and longitude lines being represented by border lines as shown.

- Denotes one inch spaces on border line of original tracing.

J. B. GOFF NO. 1 (1050) WELL.

Spencer District, Roane County, W. Va.  
By United Fuel Gas Co.  
On 25 acres.  
Keller Map I-22.  
Elevation.....  
Completed Feb. 24, 1919.  
Gas well. 1,250,000 cu. ft.  
From Heck's notes.

70130  
909A

	Top.	Bottom.
Big Lime	1871	- ....
Berea Sand (gas, 2416-2420')	2399	- 2420



STATE OF WEST VIRGINIA  
DEPARTMENT OF MINES  
OIL AND GAS DIVISION

493

Quadrangle Spencer

WELL RECORD

Permit No. 907A

Oil or Gas Well Gas  
(KIND)

Company UNITED FUEL GAS CO.  
 Address P.O. Box 1273, Charleston 25, W. Va.  
 Farm Goff & Foster Acres 23  
 Location (waters) Little Creek  
 Well No. 1050 Elev. 868.6'  
 District Spencer, County Roane  
 The surface of tract is owned in fee by \_\_\_\_\_  
 Address \_\_\_\_\_  
 Mineral rights are owned by T. V. Foster, Executor,  
et al First National Bank Address Spencer, W. Va.  
 Drilling commenced 1-1-19  
 Drilling completed 2-26-19  
 Date Shot \_\_\_\_\_ From \_\_\_\_\_ To \_\_\_\_\_  
 With \_\_\_\_\_  
 Open Flow 6 /10ths Water in 6-5/8 Inch  
 \_\_\_\_\_ /10ths Merc. in \_\_\_\_\_ Inch  
 Volume 1,250,000 Cu. Ft.  
 Rock Pressure 325 lbs. 60 Min. hrs.  
 Oil \_\_\_\_\_ bbls., 1st 24 hrs.  
 Fresh water \_\_\_\_\_ feet \_\_\_\_\_ feet  
 Salt water \_\_\_\_\_ feet \_\_\_\_\_ feet

Casing and Tubing	Used in Drilling	Left in Well	Packers
Size		16'	
16			Kind of Packer
13			<u>Callanan</u>
10	700'		Size of
8 1/4	1095'		<u>5-3/16x2</u>
6 1/2		1876'	Depth set
5 3/16			<u>2282</u>
3			Perf. top
2		2487'	Perf. bottom
Liners Used			Perf. top
			Perf. bottom

CASING CEMENTED \_\_\_\_\_ SIZE \_\_\_\_\_ No. Ft. \_\_\_\_\_ Date \_\_\_\_\_

COAL WAS ENCOUNTERED AT \_\_\_\_\_ FEET \_\_\_\_\_ INCHES  
 \_\_\_\_\_ FEET \_\_\_\_\_ INCHES \_\_\_\_\_ FEET \_\_\_\_\_ INCHES  
 \_\_\_\_\_ FEET \_\_\_\_\_ INCHES \_\_\_\_\_ FEET \_\_\_\_\_ INCHES

Formation	Color	Hard or Soft	Top	Bottom	Oil, Gas or Water	Depth Found	Remarks
Pittsburgh Sand			400	440			
Little Dunkard			790	815			
Big Dunkard			1025	1110			
Gas Sand			1160	1195			
Salt Sand			1657	1775	Hole reduced at 2080'		
Little Lime			1840	1871	Show of oil at 2420'		
Big Lime			1871	1992	Gas in Injun at 1995'		
Big Injun			1992	2018			
Berea			2399	2420			
Gas			2416	2420			
Show oil			2420				
Total depth			2470'				



APR 22 1955

