

Latitude 38° 40'

Longitude 81° 15'

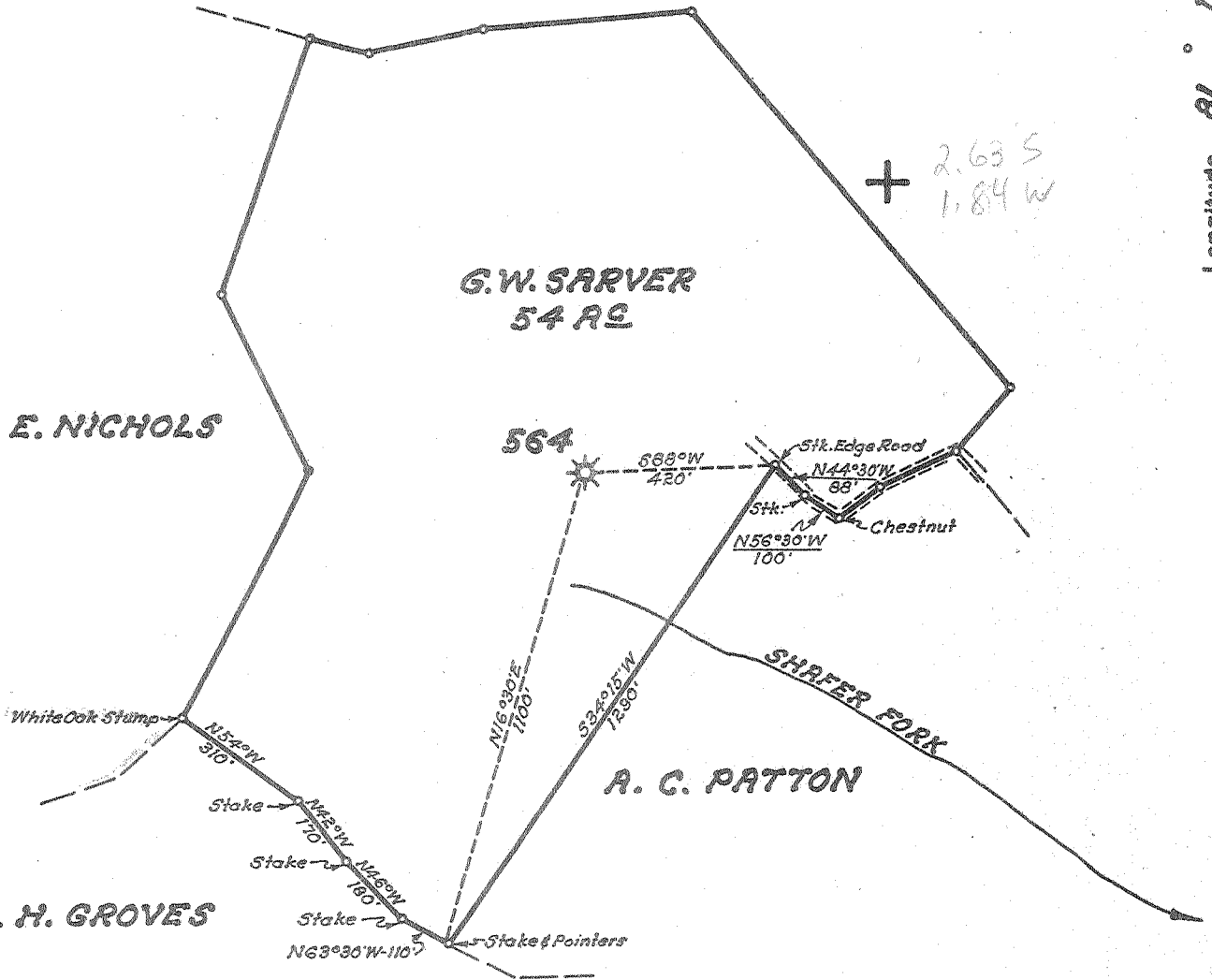
ALBERT S. CRINER

G.W. SARVER  
54 AC

MARY E. NICHOLS

B. H. GROVES

A. C. PATTON



- New Location...
- Drill Deeper.....
- Abandonment.....

Company UNITED FUEL GAS CO.  
 Address CHARLESTON, W. VA.  
 Farm G. W. SARVER  
 Tract \_\_\_\_\_ Acres 54 Lease No. 2260  
 Well (Farm) No. \_\_\_\_\_ Serial No. 564  
 Elevation (Spirit Level) 1056.8  
 Quadrangle WALTON  
 County BOONE District GEARY  
 Engineer Paul E. Joadine  
 Engineer's Registration No. 669  
 File No. 80-77 Drawing No. \_\_\_\_\_  
 Date 3-3-55 Scale 1" = 400'

STATE OF WEST VIRGINIA  
 DEPARTMENT OF MINES  
 OIL AND GAS DIVISION  
 CHARLESTON

WELL LOCATION MAP  
 FILE NO. ROA-929-A

+ Denotes location of well on United States Topographic Maps, scale 1 to 62,500, latitude and longitude lines being represented by border lines as shown.  
 - Denotes one inch spaces on border line of original tracing.



STATE OF WEST VIRGINIA  
DEPARTMENT OF MINES  
OIL AND GAS DIVISION

498

Quadrangle Walton

WELL RECORD

Permit No. 929-A

Oil or Gas Well Gas  
(KIND)

Company UNITED FUEL GAS COMPANY  
Address P.O. Box 1273, Charleston 25, W. Va.  
Farm G. W. Sarver Acres 54  
Location (waters) Shafer Fork  
Well No. 564 Elev. 1056.8'  
District Geary County Roane  
The surface of tract is owned in fee by \_\_\_\_\_  
Address \_\_\_\_\_  
Mineral rights are owned by Bessie A. Sarver, et al  
Address Amma, W. Va.  
Drilling commenced 9-15-13  
Drilling completed 11-3-13  
Date Shot \_\_\_\_\_ From \_\_\_\_\_ To \_\_\_\_\_  
With \_\_\_\_\_  
Open Flow 28 /10ths Water in 2 Inch  
\_\_\_\_\_ /10ths Merc. in \_\_\_\_\_ Inch  
Volume 251,616 Cu. Ft.  
Rock Pressure 485 lbs. \_\_\_\_\_ hrs.  
Oil \_\_\_\_\_ bbls., 1st 24 hrs.  
Fresh water \_\_\_\_\_ feet \_\_\_\_\_ feet  
Salt water \_\_\_\_\_ feet \_\_\_\_\_ feet

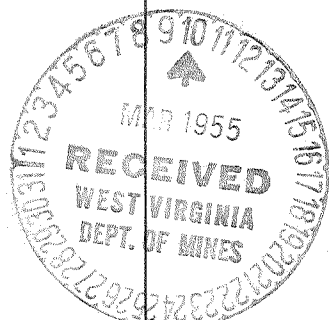
Casing and Tubing	Used in Drilling	Left in Well	Packers
Size			
16			Kind of Packer
13			<u>Callanan</u>
10			Size of
8 1/4		<u>708'</u>	<u>2x6-5/8x16</u>
6 3/4		<u>1799'</u>	Depth set
5 3/16			<u>1869'</u>
3			Perf. top
2		<u>2038'</u>	Perf. bottom
Liners Used			Perf. top
			Perf. bottom

CASING CEMENTED \_\_\_\_\_ SIZE \_\_\_\_\_ No. Ft. \_\_\_\_\_ Date \_\_\_\_\_

COAL WAS ENCOUNTERED AT \_\_\_\_\_ FEET \_\_\_\_\_ INCHES  
\_\_\_\_\_ FEET \_\_\_\_\_ INCHES \_\_\_\_\_ FEET \_\_\_\_\_ INCHES  
\_\_\_\_\_ FEET \_\_\_\_\_ INCHES \_\_\_\_\_ FEET \_\_\_\_\_ INCHES

Formation	Color	Hard or Soft	Top	Bottom	Oil, Gas or Water	Depth Found	Remarks
Clay			0	14			
Slate			14	180			
Red Rock			180	305			
Sand			305	340			
Red Rock			340	550			
Sandy Lime			550	575			
Sand			575	650			
Sandy Lime			650	672			
Sand			672	728			
Slate			728	850			
Sand			850	900			
Slate			900	1000			
Sand			1000	1120			
Slate			1120	1280			
Slate & Shells			1280	1375			
Shells			1375	1390			
1st Salt Sand			1390	1575			
Slate			1575	1600			
2nd Salt Sand			1600	1700			
Slate			1700	1705			
Red Rock			1705	1725			
Maxon Sand			1725	1750			
Slate			1750	1752			
Little Lime			1752	1775			
Pencil Cave			1775	1780			
Big Lime			1780	1886			
Big Injun			1886	1955			
1st Gas			1886	1887			
2nd Gas			1900	1905			
3rd Gas			1947	1955			
Slate & Shells			1955	2027			
Total depth			2027'				

Gas at 1439'6"



JUN 17 1955

