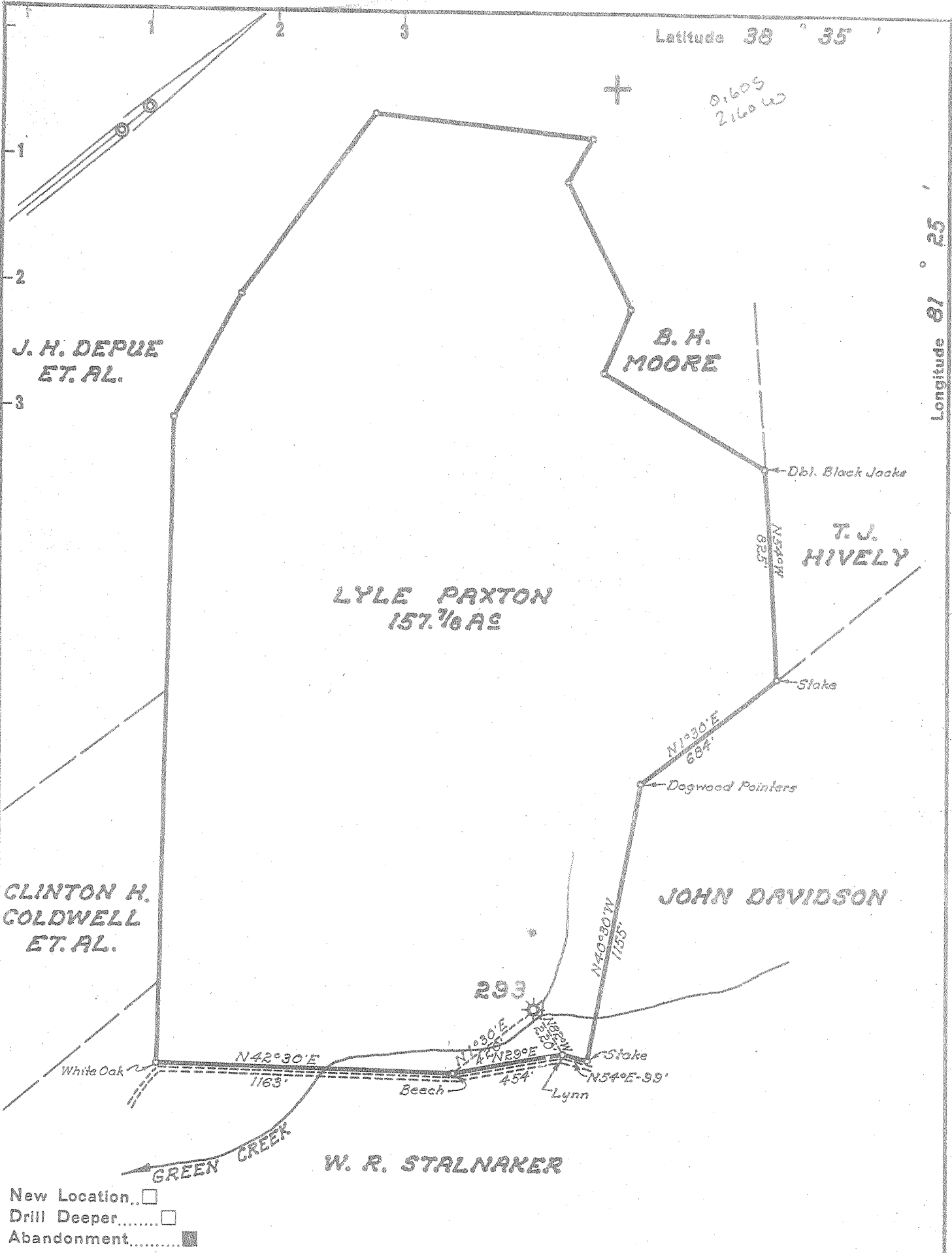


Latitude 38° 35'

0.605  
2.160 W

Longitude 81° 25'



- New Location
- Drill Deeper
- Abandonment

Company	UNITED FUEL GAS CO.
Address	CHARLESTON, W. VA.
Farm	LYLE PAXTON
Tract	Acres 157 7/8 Lease No. 7600
Well (Farm) No.	1 Serial No. 293
Elevation (Spirit Level)	733.4
Quadrangle	WALTON
County	ROANE District WALTON
Engineer	<i>Paul E. Joachim</i>
Engineer's Registration No.	669
File No.	73-70 Drawing No.
Date	4-27-55 Scale 1"=500'

STATE OF WEST VIRGINIA  
DEPARTMENT OF MINES  
OIL AND GAS DIVISION  
CHARLESTON

WELL LOCATION MAP  
FILE NO. BOA-945-R

+ Denotes location of well on United States Topographic Maps, scale 1 to 62,500, latitude and longitude lines being represented by border lines as shown.

- Denotes one inch spaces on border line of original tracing.



STATE OF WEST VIRGINIA  
DEPARTMENT OF MINES  
OIL AND GAS DIVISION

574

22

Quadrangle Walton

Permit No. 945-A

**WELL RECORD**

Oil or Gas Well Gas  
(KIND)

Company UNITED FUEL GAS COMPANY  
Address P.O. Box 1273, Charleston 25, W. Va.  
Farm Lyle Paxton Acres 140  
Location (waters) Green Creek  
Well No. 293 Elev. 733.4  
District Walton County Roane

The surface of tract is owned in fee by \_\_\_\_\_  
Address \_\_\_\_\_  
Mineral rights are owned by P. M. Paxton, et al  
Address Walton, W. Va.

Drilling commenced \_\_\_\_\_  
Drilling completed \_\_\_\_\_  
Date Shot 3-31-27 From 1732 To 1739  
With \_\_\_\_\_

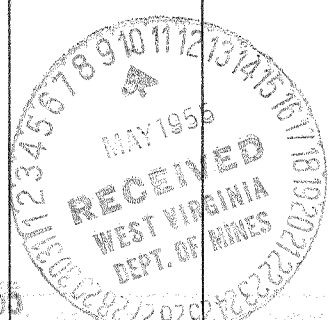
Open Flow \_\_\_\_\_ /10ths Water in \_\_\_\_\_ Inch  
\_\_\_\_\_ /10ths Merc. in \_\_\_\_\_ Inch  
Volume 962,000 Cu. Ft.  
Rock Pressure \_\_\_\_\_ lbs. \_\_\_\_\_ hrs.  
Oil \_\_\_\_\_ bbls., 1st 24 hrs.  
Fresh water \_\_\_\_\_ feet \_\_\_\_\_ feet  
Salt water \_\_\_\_\_ feet \_\_\_\_\_ feet

Casing and Tubing	Used in Drilling	Left in Well	Packers
Size			
16			Kind of Packer <u>Anchor</u>
13	<u>12'</u>		
10	<u>130'</u>		Size of <u>3x5-3/16</u>
8 1/4	<u>465'</u>		
6 1/2		<u>1583'</u>	Depth set <u>1665'</u>
5 3/16		<u>1650'</u>	
3		<u>1803'</u>	Perf. top _____
2			Perf. bottom _____
Liners Used			Perf. top _____
			Perf. bottom _____

CASING CEMENTED \_\_\_\_\_ SIZE \_\_\_\_\_ No. Ft. \_\_\_\_\_ Date \_\_\_\_\_

COAL WAS ENCOUNTERED AT \_\_\_\_\_ FEET \_\_\_\_\_ INCHES  
\_\_\_\_\_ FEET \_\_\_\_\_ INCHES \_\_\_\_\_ FEET \_\_\_\_\_ INCHES  
\_\_\_\_\_ FEET \_\_\_\_\_ INCHES \_\_\_\_\_ FEET \_\_\_\_\_ INCHES

Formation	Color	Hard or Soft	Top	Bottom	Oil, Gas or Water	Depth Found	Remarks
Conductor			12				
Cow Run Sand			475	495			
Sand			500	590			
Sand			1070	1090			
Sand			1120	1160			
Salt Sand			1170				
Water			1225				
Second Water			1255				
Break in Sand			1390	1400	Coal & Slate		
Lime Shells			1525	1530			
Maxon Sand			1530	1550			
Little Lime			1550	1570			
Rock			1570	1578			
Top Big Lime			1578				
Top Keener			1705	1725			
Top Big Injun			1725				
Gas			1737				
Slate			1752	1755			
Bottom hole			1765				
Sea Level			737				
Total depth			1787'				



AUG 12 1958

(Over)

