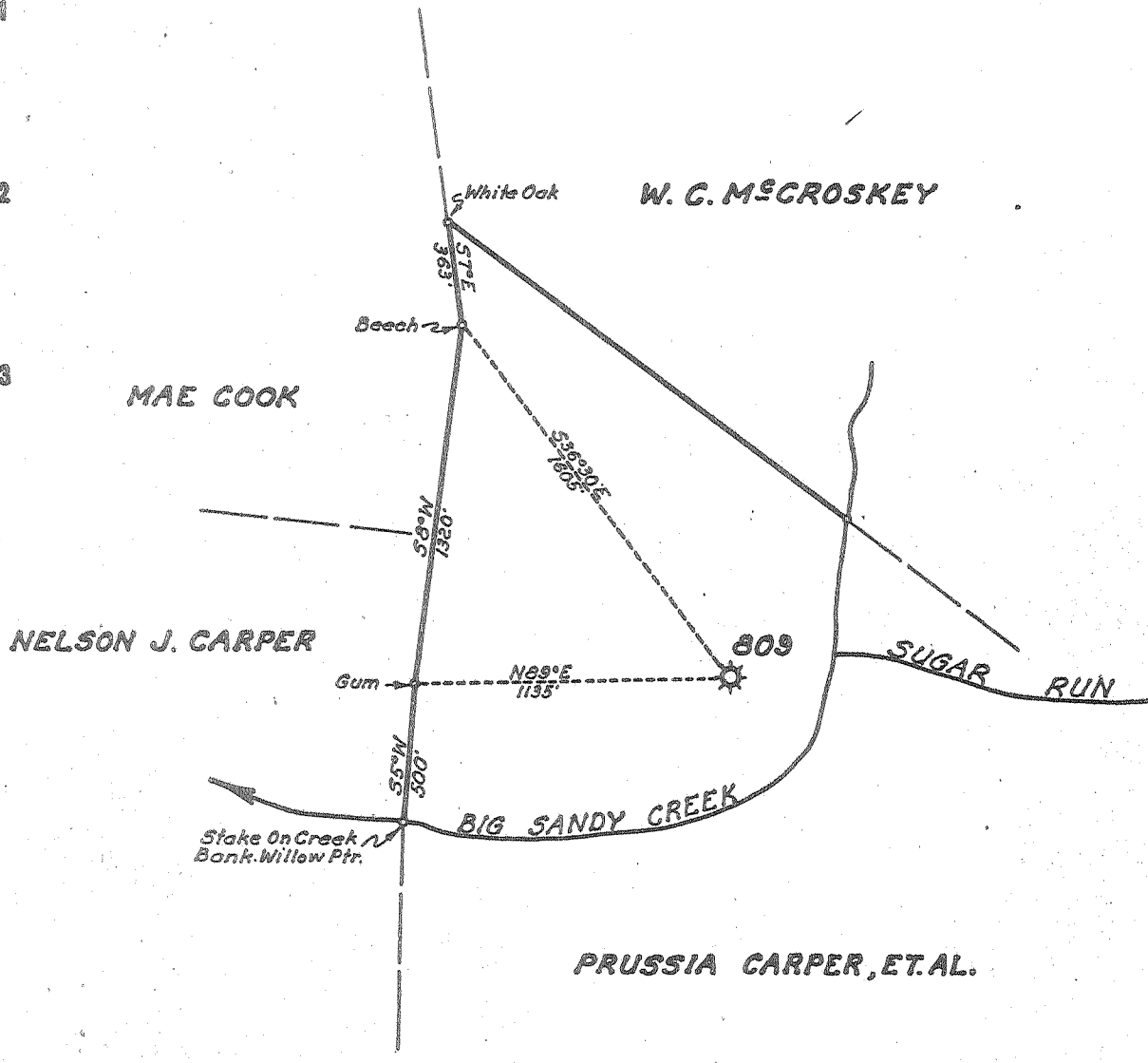


Latitude 38° 35'

01275  
01275 W

Longitude 81° 15'



New Location..   
 Drill Deeper.....   
 Abandonment.....

Company	UNITED FUEL GAS CO.
Address	CHARLESTON, W. VA.
Farm	PRUSSIA CARPER
Tract	Acres 100 Lease No. 9213
Well (Farm) No.	Serial No. 809
Elevation (Spirit Level)	765.0 BAR.
Quadrangle	WALTON
County	ROANE District GEARY
Engineer	<i>Hubert R. Ferrell</i>
Engineer's Registration No.	2529
File No.	02-73 Drawing No.
Date	5-1-56 Scale 1"=660'

STATE OF WEST VIRGINIA  
 DEPARTMENT OF MINES  
 OIL AND GAS DIVISION  
 CHARLESTON

WELL LOCATION MAP  
 FILE NO. ROA-997-A

+ Denotes location of well on United States Topographic Maps, scale 1 to 62,500, latitude and longitude lines being represented by border lines as shown.

- Denotes one inch spaces on border line of original tracing.



579

STATE OF WEST VIRGINIA  
DEPARTMENT OF MINES  
OIL AND GAS DIVISION

Quadrangle Walton

Permit No. 997-A

WELL RECORD

Oil or Gas Well Gas  
(KIND)

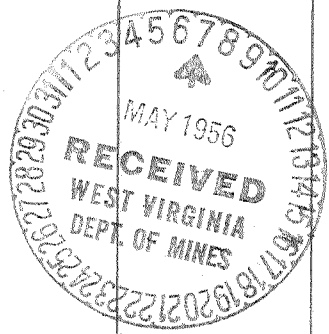
Company UNITED FUEL GAS COMPANY  
Address P.O. Box 1273, Charleston 25, W. Va.  
Farm Prussia Carper Acres 100  
Location (waters) Big Sandy Creek  
Well No. 809 Elev. 765'  
District Geary County Roane  
The surface of tract is owned in fee by \_\_\_\_\_  
Address \_\_\_\_\_  
Mineral rights are owned by Willie S. Carper, et al  
Address Morgantown, W.Va.  
Drilling commenced 9-7-16  
Drilling completed 10-26-16  
Date Shot From \_\_\_\_\_ To \_\_\_\_\_  
With \_\_\_\_\_

Casing and Tubing	Used in Drilling	Left in Well	Packers
Size			
16			Kind of Packer <u>Parmaco</u>
13			
10		<u>24'1"</u>	Size of <u>3x5-3/16x16</u>
8 1/2	<u>451'</u>		
6 1/2		<u>1547'5"</u>	Depth set <u>1391'</u>
5 3/16		<u>1665'6"</u>	
3			Perf. top _____
2			Perf. bottom _____
Liners Used			Perf. top _____
			Perf. bottom _____

Open Flow /10ths Water in \_\_\_\_\_ Inch  
/10ths Merc. in \_\_\_\_\_ Inch  
Volume 3,750,000 Cu. Ft.  
Rock Pressure 385 lbs. 45 hrs.  
Oil \_\_\_\_\_ bbls., 1st 24 hrs.  
Fresh water 245' feet \_\_\_\_\_ feet  
Salt water 1100 feet \_\_\_\_\_ feet

CASING CEMENTED \_\_\_\_\_ SIZE \_\_\_\_\_ No. Ft. \_\_\_\_\_ Date \_\_\_\_\_  
COAL WAS ENCOUNTERED AT 440 FEET 36 INCHES  
\_\_\_\_\_ FEET \_\_\_\_\_ INCHES FEET \_\_\_\_\_ INCHES  
\_\_\_\_\_ FEET \_\_\_\_\_ INCHES FEET \_\_\_\_\_ INCHES

Formation	Color	Hard or Soft	Top	Bottom	Oil, Gas or Water	Depth Found	Remarks
Little Dunkard			390	418			
Slate			418	440			
Coal			440	443	Gas at 1577'		
Slate			443	475	Reduced hole to 5-3/16" at 1579'		
Big Dunkard			475	648	Gas 1610'		
Slate			648	695	Gas 1639'		
Broken Lime & Slate			695	972	Gas 1645'		
Gas Sand			972	1003			
Slate			1003	1010			
Salt Sand (1st)			1010	1200			
Slate			1200	1250			
2nd Salt Sand			1250	1483			
Little Lime			1483	1500			
Pencil Cave			1500	1518			
Big Lime			1518	1608			
Big Injun			1608	1646			
Slate			1646	1650			
Total depth			1650'				



JUNE 21, 1956

