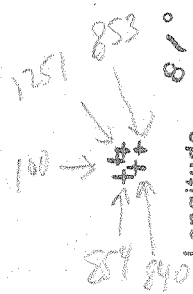
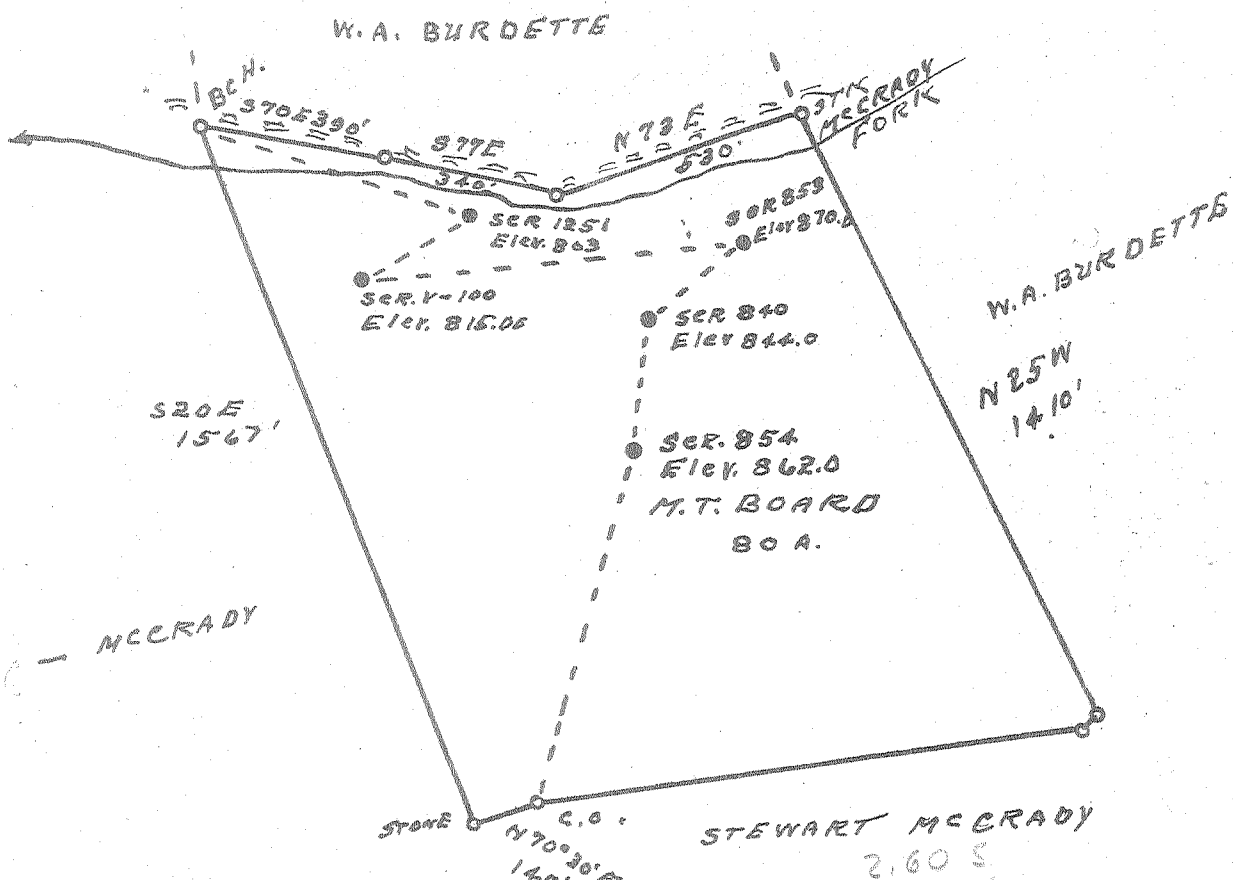


Latitude 38° 50'

Longitude 81° 30'



100	2.60 S
	0.46 W
840	2.62 S
	0.36 W
853	2.55 S
	0.34 W
854	2.68 S
	0.43 W
1251	2.51 S
	0.42 W

New Location...   
 Drill Deeper.....   
 Abandonment.....

Company CECIL RAINES ET AL.  
 Address GANDEEVILLE, W.V.A  
 Farm M. T. BOARD  
 Tract \_\_\_\_\_ Acres 80 Lease No. \_\_\_\_\_  
 Well (Farm) No. \_\_\_\_\_ Serial No. AS SHOWN  
 Elevation (Spirit Level) SEE ABOVE  
 Quadrangle RIPLEY  
 County ROANE District CURTIS  
 Engineer G. F. Dyer  
 Engineer's Registration No. 804  
 File No. \_\_\_\_\_ Drawing No. \_\_\_\_\_  
 Date 1-22-57 Scale 1" = 400'

STATE OF WEST VIRGINIA  
 DEPARTMENT OF MINES  
 OIL AND GAS DIVISION  
 CHARLESTON

**WELL LOCATION MAP**

FILE NO. ROA-1007-A-#100  
~~ROA-1010-A-#854~~ ~~ROA-1008-A-#840~~  
~~ROA-1013-A-#1251~~ ~~ROA-1009-A-#853~~

+ Denotes location of well on United States Topographic Maps, scale 1 to 62,500, latitude and longitude lines being represented by border lines as shown.

- Denotes one inch spaces on border line of original tracing.



STATE OF WEST VIRGINIA  
DEPARTMENT OF MINES  
OIL AND GAS DIVISION

574

Quadrangle Ripley

Permit No. 1007-A Completed Feb. 13, 1919

WELL RECORD

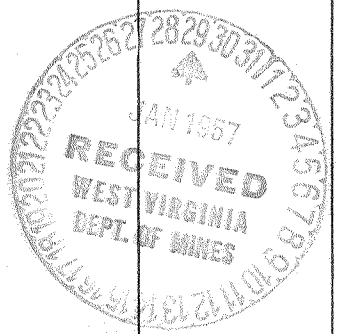
Oil or Gas Well Oil  
(KIND)

Company Cecil Raines Et Al  
 Address Gandeeville, West Virginia.  
 Farm M. T. Board Acres 80  
 Location (waters) McCraday Fork (Frozen Camp)  
 Well No. 861 (Ser. V-100) Elev. 862x 815  
 District Curtis County Roane  
 The surface of tract is owned in fee by M. T. Board  
 Address \_\_\_\_\_  
 Mineral rights are owned by M. T. Board Estate  
 Address \_\_\_\_\_  
 Drilling commenced Jan. 29, 1919  
 Drilling completed Feb. 13, 1919  
 Date Shot Feb. 23, 1919 From \_\_\_\_\_ To \_\_\_\_\_  
 With 30 Quarts Glycerine  
 Open Flow \_\_\_\_\_ /10ths Water in \_\_\_\_\_ Inch  
 \_\_\_\_\_ /10ths Merc. in \_\_\_\_\_ Inch  
 Volume \_\_\_\_\_ Cu. Ft.  
 Rock Pressure \_\_\_\_\_ lbs. \_\_\_\_\_ hrs.  
 Oil Unknown bbls., 1st 24 hrs.  
 Fresh water None feet \_\_\_\_\_ feet  
 Salt water None feet \_\_\_\_\_ feet

Casing and Tubing	Used in Drilling	Left in Well	Packers
Size			Kind of Packer
16			
13			
10			Size of
8 1/2	690	690	
6 5/8	882	882	Depth set
5 3/16			
3			Perf. top
2	962	962	Perf. bottom
Liners Used			Perf. top
			Perf. bottom

CASING CEMENTED None SIZE \_\_\_\_\_ No. Ft. \_\_\_\_\_ Date \_\_\_\_\_  
 COAL WAS ENCOUNTERED AT None FEET \_\_\_\_\_ INCHES  
 \_\_\_\_\_ FEET \_\_\_\_\_ INCHES FEET \_\_\_\_\_ INCHES  
 \_\_\_\_\_ FEET \_\_\_\_\_ INCHES FEET \_\_\_\_\_ INCHES

Formation	Color	Hard or Soft	Top	Bottom	Oil, Gas or Water	Depth Found	Remarks
Red Rock & Slate			0	390			
Pitts. Sand			390	550			
Lime Shells & Slate			550	600			
Red Rock			600	630	630		
Lime Shells			630	650			
Sand			650	670			
Red Rock			670	690			
Slate & Shells			690	894			
Little Duncard			894	962	Oil 1952 to 962		
Total Depth			962				



Formation	Color	Hard or Soft	Top	Bottom	Oil, Gas or Water	Depth Found	Remarks

Date 28 January, 1957, 19\_\_

APPROVED Cecil Raines, et al, Owner

By Cecil Raines (Title) Partner