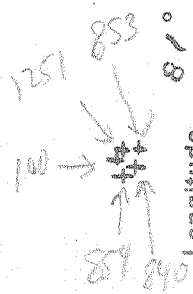
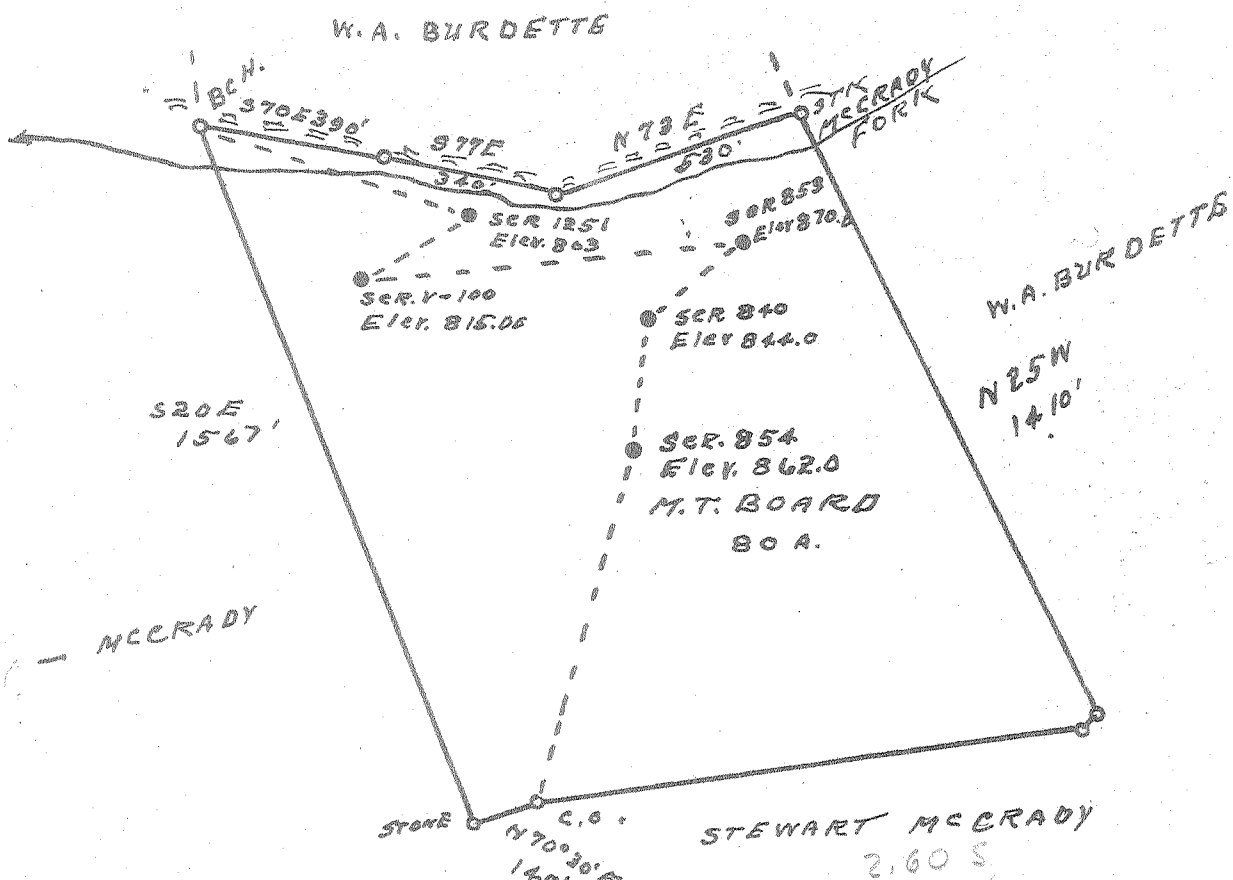


Latitude 38° 50'

Longitude 81° 30'



100	2.60 S
	0.46 W
840	2.62 S
	0.36 W
853	2.55 S
	0.84 W
854	2.68 S
	0.43 W
1251	2.51 S
	0.42 W

- New Location...
- Drill Deeper.....
- Abandonment.....

Company CECIL RAINES ET AL.  
 Address GANDEEVILLE, W.V.A  
 Farm M. T. BOARD  
 Tract \_\_\_\_\_ Acres 80 Lease No. \_\_\_\_\_  
 Well (Farm) No. \_\_\_\_\_ Serial No. AS SHOWN  
 Elevation (Spirit Level) SEE ABOVE  
 Quadrangle RIPLEY  
 County ROANE District CURTIS  
 Engineer G. F. Dyer  
 Engineer's Registration No. 804  
 File No. \_\_\_\_\_ Drawing No. \_\_\_\_\_  
 Date 1-22-57 Scale 1" = 400'

STATE OF WEST VIRGINIA  
 DEPARTMENT OF MINES  
 OIL AND GAS DIVISION  
 CHARLESTON

**WELL LOCATION MAP**

FILE NO. ROA-1007-A-#100  
~~ROA-1010-A-#854~~ ~~ROA-1008-A-#840~~  
~~ROA-1013-A-#1251~~ ~~ROA-1009-A-#853~~  
 \* Denotes location of well on United States  
 Topographic Maps, scale 1 to 62,500, latitude  
 and longitude lines being represented  
 by border lines as shown.

— Denotes one inch spaces on border line  
 of original tracing.



STATE OF WEST VIRGINIA  
DEPARTMENT OF MINES  
OIL AND GAS DIVISION

573

Quadrangle Ripley

Permit No. Comp. March 10, 1920

Oil or Gas Well Oil  
(KIND)

WELL RECORD

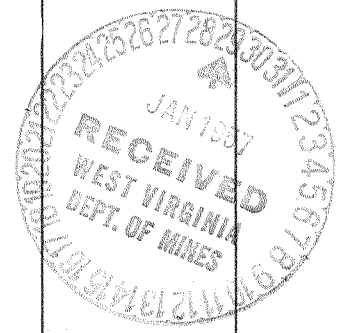
Company Cecil Raines, et al.  
 Address Gandeeville, West Virginia.  
 Farm M. T. Board Acres 80  
 Location (waters) McCready Fork (Frozen Camp)  
 Well No. 3359 ser. 854 Elev. 862  
 District Curtis County Roane  
 The surface of tract is owned in fee by M. T. Board  
 Address \_\_\_\_\_  
 Mineral rights are owned by M. T. Board Estate  
 Address \_\_\_\_\_  
 Drilling commenced Jan. 27, 1920  
 Drilling completed Mar. 20, 1920  
 Date Shot Mar. 19, 1920 From \_\_\_\_\_ To \_\_\_\_\_  
 With 20 Quarts Glycerine  
 Open Flow \_\_\_\_\_ /10ths Water in \_\_\_\_\_ Inch  
 \_\_\_\_\_ /10ths Merc. in \_\_\_\_\_ Inch  
 Volume \_\_\_\_\_ Cu. Ft.  
 Rock Pressure \_\_\_\_\_ lbs. \_\_\_\_\_ hrs.  
 Oil Unknown \_\_\_\_\_ bbls., 1st 24 hrs.  
 Fresh water \_\_\_\_\_ feet \_\_\_\_\_ feet  
 Salt water \_\_\_\_\_ feet \_\_\_\_\_ feet

Casing and Tubing	Used in Drilling	Left in Well	Packers
Size			Kind of Packer
16			
13			Size of
10			
8 1/2			Depth set
6 5/8	700	Pulled	
5 3/16	929	929	
3			Perf. top
2	957	957	Perf. bottom
Liners Used			Perf. top
			Perf. bottom

CASING CEMENTED None SIZE \_\_\_\_\_ No. Ft. \_\_\_\_\_ Date \_\_\_\_\_

COAL WAS ENCOUNTERED AT None FEET \_\_\_\_\_ INCHES  
 \_\_\_\_\_ FEET \_\_\_\_\_ INCHES \_\_\_\_\_ FEET \_\_\_\_\_ INCHES  
 \_\_\_\_\_ FEET \_\_\_\_\_ INCHES \_\_\_\_\_ FEET \_\_\_\_\_ INCHES

Formation	Color	Hard or Soft	Top	Bottom	Oil, Gas or Water	Depth Found	Remarks
Sand			0	280			
Slate			280	310			
Sand			310	350			
Red Rock			350	380			
Pitts. Sand			380	420			
Slate			420	520			
2nd. Pitts. Sand			520	580			
Slate			580	640			
Shell			640	670			
Red Rock			670	700			
Red Rock & Shells			700	820			
Shell			820	825			
Red Rock			825	929			
Shells			929	932			
Cow Run Sand			932	957	Oil 935 to 947		
Total Depth			957				



JUN 20 1957

Formation	Color	Hard or Soft	Top	Bottom	Oil, Gas or Water	Depth Found	Remarks

Date 28 January, 1957, 19\_\_

APPROVED Cecil Raines, et al. Owner

By Cecil Raines, (Partner.)  
(Title)