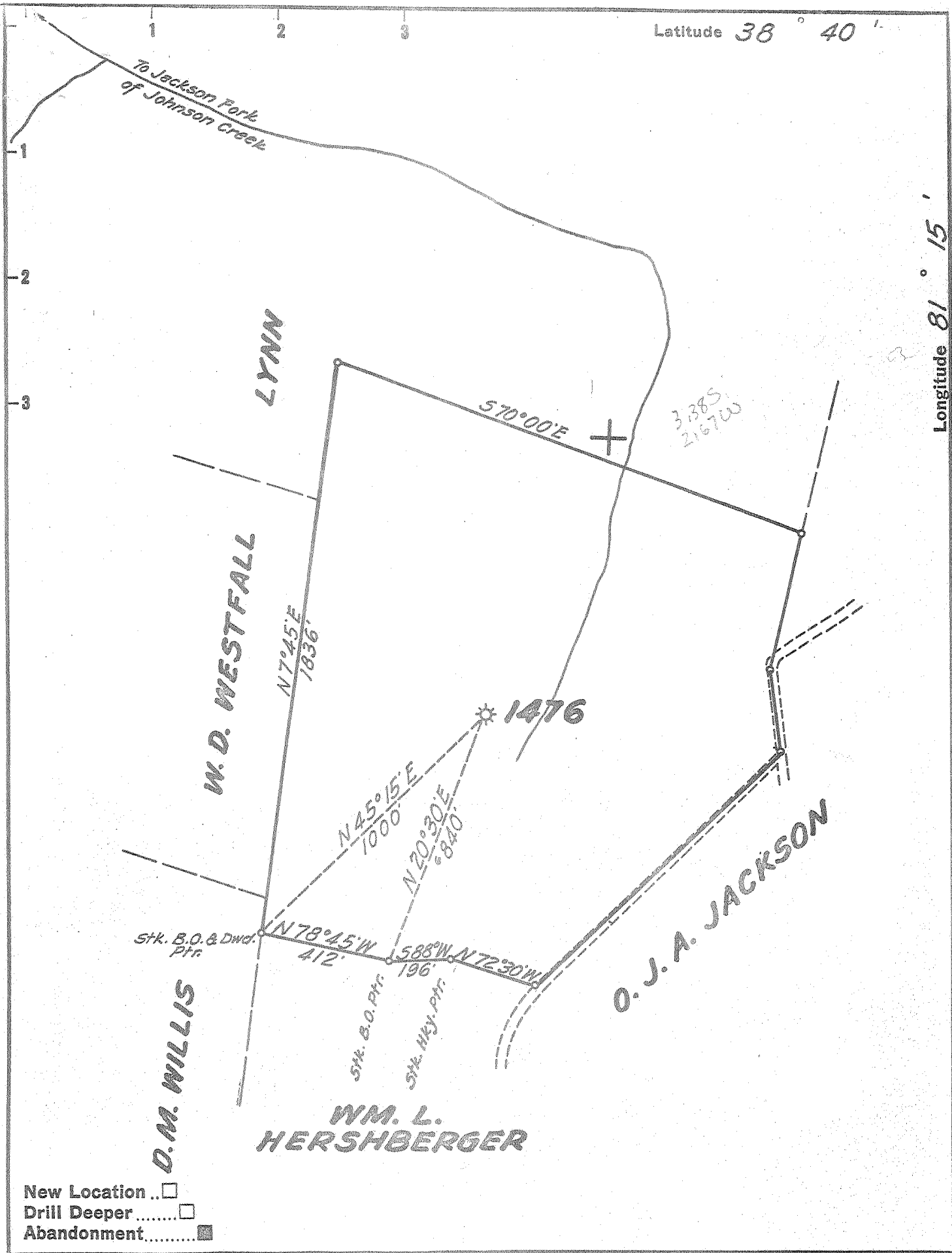


Latitude 38° 40'

Longitude 81° 15'



New Location ..
 Drill Deeper
 Abandonment.....

Company UNITED FUEL GAS CO.
 Address CHARLESTON, W. VA.
 Farm A.M.D. HERSHBERGER
 Tract _____ Acres 55 Lease No. 14002
 Well (Farm) No. _____ Serial No. 1476
 Elevation (Spirit Level) 1111.00
 Quadrangle WALTON *Clb*
 County ROANE District SMITHFIELD
 Engineer Seibert R. Jewell
 Engineer's Registration No. 2529
 File No. 78-77 Drawing No. _____
 Date 4-17-57 Scale 1"=400'

STATE OF WEST VIRGINIA
 DEPARTMENT OF MINES
 OIL AND GAS DIVISION
 CHARLESTON

WELL LOCATION MAP
 FILE NO. ROA-1016-A

+ Denotes location of well on United States Topographic Maps, scale 1 to 62,500, latitude and longitude lines being represented by border lines as shown.

- Denotes one inch spaces on border lines of original tracing.



584

STATE OF WEST VIRGINIA
DEPARTMENT OF MINES
OIL AND GAS DIVISION

Quadrangle Walton
Permit No. 1616-A

WELL RECORD

Oil or Gas Well Gas
(KIND)

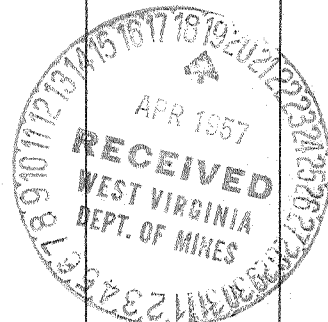
Company United Fuel Gas Co.
Address P. O. Box 1273; Charleston 25, W. Va.
Farm A.M.D. Hershberger Acres 55
Location (waters) Johnson Creek
Well No. 1476 Elev. 1111.00
District Smithfield County Roane
The surface of tract is owned in fee by _____
Address _____
Mineral rights are owned by R. C. Andrews
2410 Kanawha Blvd, E. Address Charleston, W. Va.
Drilling commenced Jan. 19, 1925
Drilling completed Feb. 28, 1925
Date Shot _____ From _____ To _____
With _____
Open Flow _____ /10ths Water in _____ Inch
_____ /10ths Merc. in _____ Inch
Volume 325,000 Cu. Ft.
Rock Pressure 340 lbs. _____ hrs.
Oil _____ bbls., 1st 24 hrs.
Fresh water _____ feet _____ feet
Salt water 1500 feet _____ feet

Casing and Tubing	Used in Drilling	Left in Well	Packers
Size			Kind of Packer
16			<u>O.W.S. Bottom</u>
13			Size of
10	<u>250</u>	<u>Pulled</u>	<u>5-3/16 x 2</u>
8 1/4	<u>645</u>	<u>Pulled</u>	Depth set
6 5/8		<u>1835</u>	<u>1919'</u>
5 3/16			Perf. top
3			Perf. bottom
2		<u>2034</u>	Perf. top
Liners Used			Perf. bottom

CASING CEMENTED _____ SIZE _____ No. Ft. _____ Date _____

COAL WAS ENCOUNTERED AT 870 FEET 60 INCHES
_____ FEET _____ INCHES FEET _____ INCHES
_____ FEET _____ INCHES FEET _____ INCHES

Formation	Color	Hard or Soft	Top	Bottom	Oil, Gas or Water	Depth Found	Remarks
Big Dunkard Sand			600	770	Steel Line Measurements of 6-5/8" Casing, Big Lime, Reduced Hole, and Total Depth, Big Injun Sand. 6-5/8 x 8-1/4" O.W.S.B. Packer on bottom of 6-5/8" Casing. Reduced Hole 1911		
Coal			870	875			
Salt Sand			1360	1740			
Water				1500			
Maxon Sand			1753	1773			
Little Lime			1780	1808			
Pencil Cave			1820	1830			
Big Lime			1830	1940			
Reduced Hole			1911				
Big Injun Sand			1940	1955			
Gas			1954	1955			
Break			1955	1980			
Big Injun Sand			1980	1988			
Gas			1983	1988			
Slate & Shells			1988	2034			
Total Depth			2034				



DEC 6 1957

