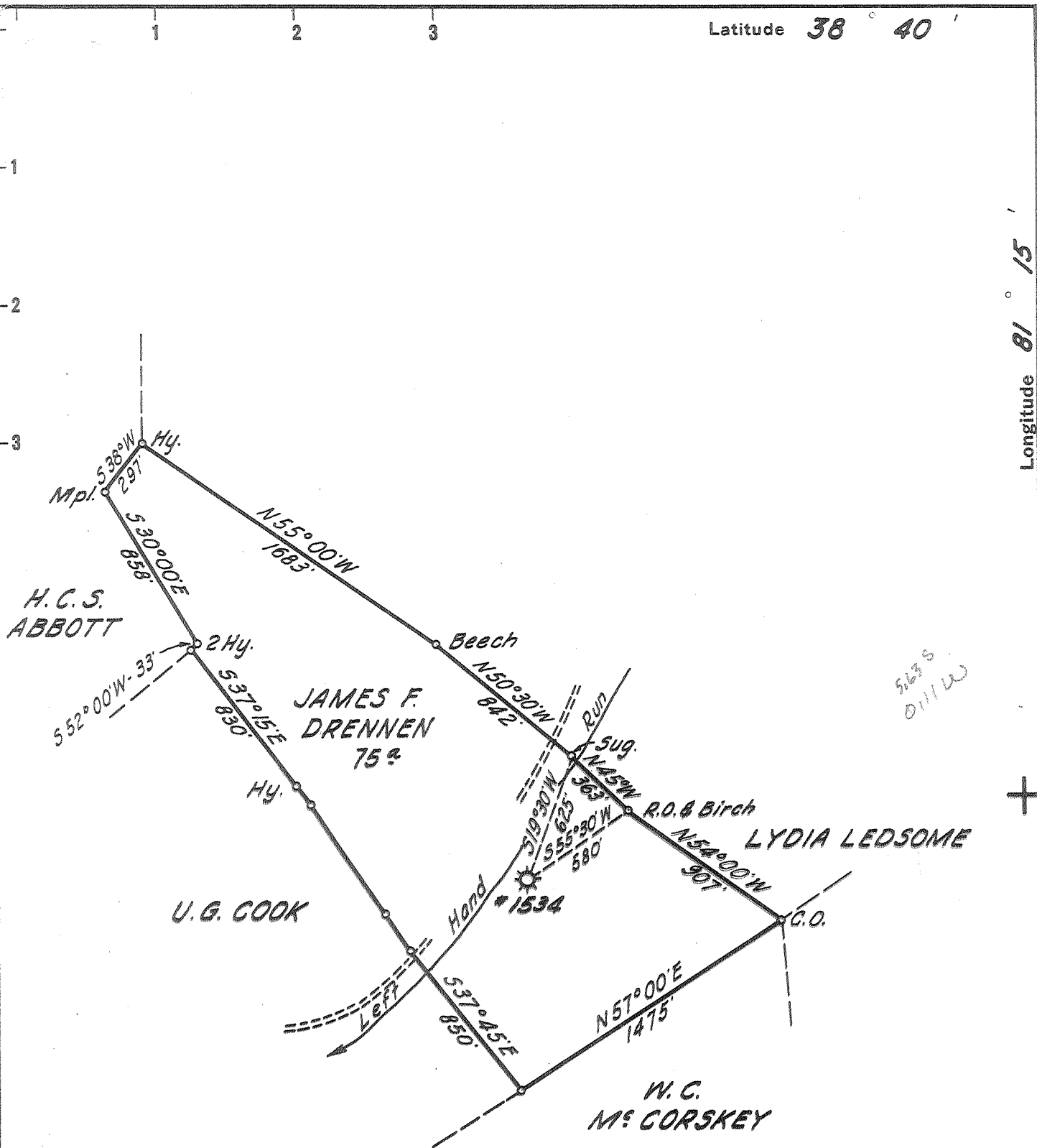


Latitude 38° 40'

Longitude 81° 15'



Company	UNITED FUEL GAS COMPANY		
Address	CHARLESTON, W. VA.		
Farm	JAMES F. DRENNEN		
Tract	Acres 75	Lease No.	14761 / 5660
Well (Farm) No.	1	Serial No.	1534
Elevation (Spirit Level)	709.50'		
Quadrangle	WALTON		
County	ROANE	District	GEARY
Engineer	<i>Frank E. [unclear]</i>		
Engineer's Registration No.	669		
File No.	82-75	Drawing No.	
Date	5-13-59	Scale	1" = 660'

STATE OF WEST VIRGINIA  
 DEPARTMENT OF MINES  
 OIL AND GAS DIVISION  
 CHARLESTON

**WELL LOCATION MAP**  
 FILE NO. ROA-1057-A

+ Denotes location of well on United States Topographic Maps, scale 1 to 62,500, latitude and longitude lines being represented by border lines as shown.  
 - Denotes one inch spaces on border line of original tracing.



627

STATE OF WEST VIRGINIA  
DEPARTMENT OF MINES  
OIL AND GAS DIVISION

Quadrangle Walton

Permit No. -1057-A

WELL RECORD

Oil or Gas Well Gas  
(KIND)

Company United Fuel Gas Company  
 Address Charleston 25, W. Va.; P.O. Box 1273  
 Farm James F. Drennan Acres 75  
 Location (waters) Left Hand Run  
 Well No. 1534 Elev. 709.50  
 District Geary County Roane  
 The surface of tract is owned in fee by \_\_\_\_\_  
 Address \_\_\_\_\_  
 Mineral rights are owned by R. Bowman Ogden, et al  
Charleston Nat'l. Bank Address Charleston, W.Va.  
 Drilling commenced Oct. 22, 1925  
 Drilling completed Nov. 29, 1925  
 Date Shot \_\_\_\_\_ From \_\_\_\_\_ To \_\_\_\_\_  
 With \_\_\_\_\_  
 Open Flow 80/10ths Water in 3 Inch  
 \_\_\_\_\_/10ths Merc. in \_\_\_\_\_ Inch  
 Volume 969,800 Cu. Ft.  
 Rock Pressure 160 lbs. \_\_\_\_\_ hrs.  
 Oil \_\_\_\_\_ bbls., 1st 24 hrs.  
 WELL ACIDIZED \_\_\_\_\_  
 WELL FRACTURED \_\_\_\_\_

Casing and Tubing	Used in Drilling	Left in Well	Packers
Size			
16			Kind of Packer _____
13			<u>Anchor</u>
10			Size of _____
8 3/4	<u>490'</u>	<u>Pulled</u>	<u>3x 5-3/16 x 16</u>
6 5/8		<u>1472'1"</u>	Depth set _____
5 3/16			<u>1545</u>
3		<u>1659'0"</u>	Perf. top _____
2			Perf. bottom _____
Liners Used			Perf. top _____
			Perf. bottom _____

CASING CEMENTED \_\_\_\_\_ SIZE \_\_\_\_\_ No. Ft. \_\_\_\_\_ Date \_\_\_\_\_

COAL WAS ENCOUNTERED AT 418 FEET 84 INCHES  
 \_\_\_\_\_ FEET \_\_\_\_\_ INCHES \_\_\_\_\_ FEET \_\_\_\_\_ INCHES  
 \_\_\_\_\_ FEET \_\_\_\_\_ INCHES \_\_\_\_\_ FEET \_\_\_\_\_ INCHES

RESULT AFTER TREATMENT \_\_\_\_\_  
 ROCK PRESSURE AFTER TREATMENT \_\_\_\_\_  
 Fresh Water \_\_\_\_\_ Feet Salt Water 1115 Feet

Formation	Color	Hard or Soft	Top	Bottom	Oil, Gas or Water	Depth	Remarks
Soil			0	14	Black Oil	960	
Slate			14	19	Hole full water	1115	
Red Rock			19	29	Hole reduced	1530	
Sand			29	40	Gas 1512-1514	18/10 W 2"	179 mcf
Slate			40	60	Gas 1575		
Sand			60	75	Gas 1585-1589	30/10 M 2"	231 mcf
Slate			75	130			
Sand			130	215			
Slate			215	390			
Sand			390	418			
Coal			418	425			
Sand Dark			425	520			
Black Slate			520	570			
Sand			570	780			
Black Slate			780	940			
Salt Sand			940	1020			
Slate			1020	1025			
Sand			1025	1370			
Maxon Sand			1370	1415			
Little Lime			1415	1432			
Blue & Red Pencil			1432	1455			
Big Lime			1455	1549			
Big Injun			1549	1598			
Slate			1598	1645			
Total Depth			1645'				

MAY 1959  
 RECEIVED  
 WEST VIRGINIA  
 DEPT. OF MINES

AUG 2 1961

