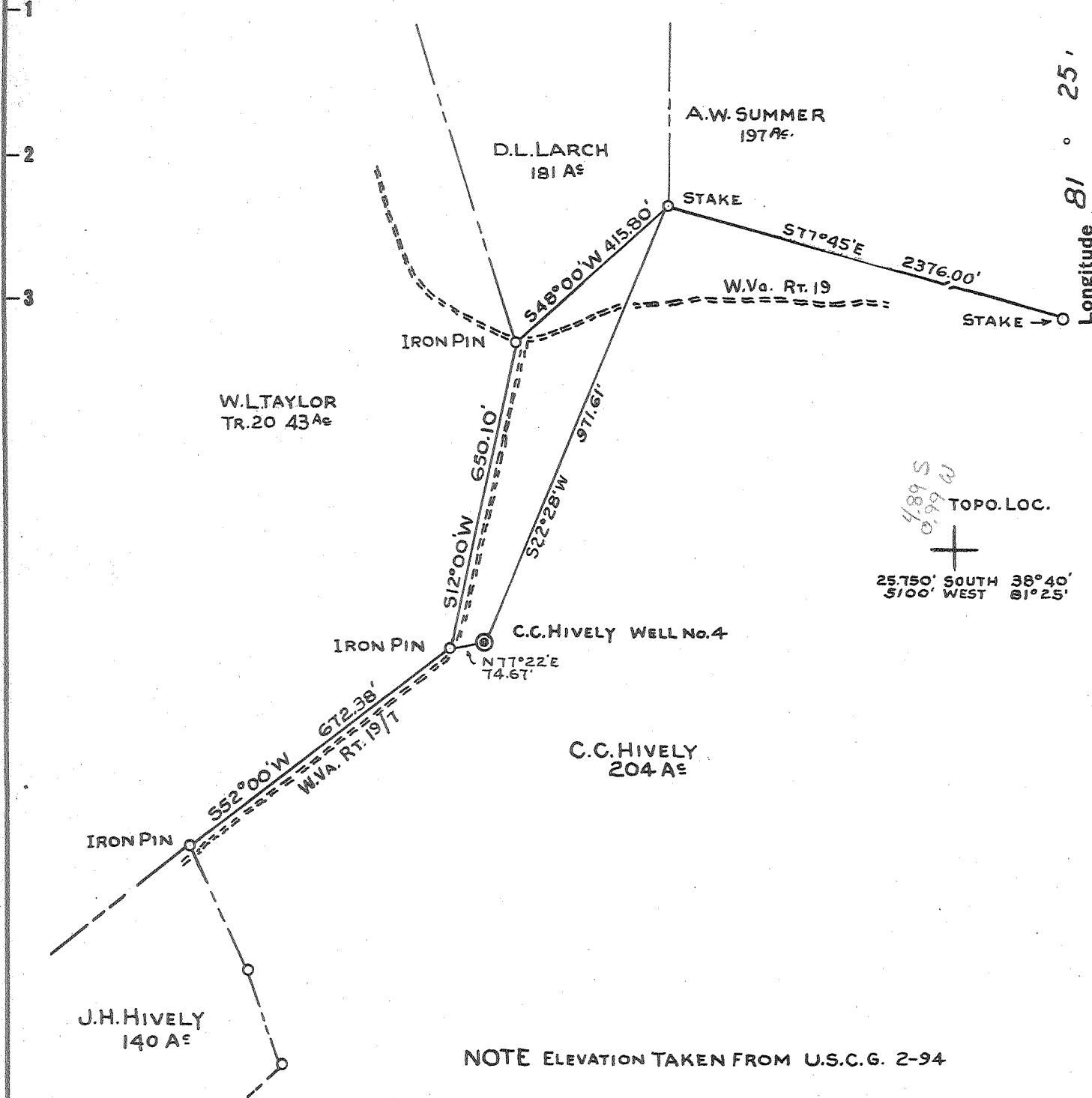


Latitude 38° 40'

Longitude 81° 25'



NOTE ELEVATION TAKEN FROM U.S.C.G. 2-94

THE ACCURACY OF THIS SURVEY IS WITHIN THE LIMITS PRESCRIBED BY THE OIL AND GAS DIVISION OF THE DEPARTMENT OF MINES.

New Location

Drill Deeper

Abandonment

I, THE UNDERSIGNED, HEREBY CERTIFY THAT THIS MAP IS CORRECT TO THE BEST OF MY KNOWLEDGE AND BELIEF AND SHOWS ALL THE INFORMATION REQUIRED BY PARAGRAPH 6 OF THE RULES AND REGULATIONS OF THE OIL AND GAS SECTION OF THE MINING LAWS OF WEST VIRGINIA.

Company CITIES SERVICE OIL COMPANY

Address BOX 873 CHARLESTON W.VA.

Farm C.C.HIVELY

Tract _____ Acres 204.89 Lease No. _____

Well (Farm) No. 4 Serial No. _____

Elevation (Spirit Level) 1086.76'

Quadrangle WALTON 4 S-495 W-098

County ROANE District WALTON

Engineer Wendell S Moore

Engineer's Registration No. 2113

File No. _____ Drawing No. _____

Date MAY 11 1964 Scale 1" = 300'

STATE OF WEST VIRGINIA
DEPARTMENT OF MINES
OIL AND GAS DIVISION
CHARLESTON

WELL LOCATION MAP
FILE NO. ROA-1102-A

+ Denotes location of well on United States Topographic Maps, scale 1 to latitude and longitude lines being represented by border lines as shown.

- Denotes one inch spaces on border line of original tracing.

6-6 (196)

BY FARM

ROA ~~31102~~

31102
Reassigned



Birdwell
TULSA
OKLAHOMA

Birdwell

CORRELATION GAMMA
COLLAR LOCATOR
PERFORATE

FILING NO.

COMPANY CITIES SERVICE

WELL C.C. HIVELEY #4

FIELD WALTON

COUNTY ROANE STATE W VA

LOCATION: Kettle Quad?
RAMBLER RIDGE

OTHER SERVICES:

SEC. TWP. RGE.

ELEVATIONS:

PERMANENT DATUM G.L. ELEV. N/A
LOG MEASURED FROM D.F. 2' A.G.L.
DRILLING MEASURED FROM D.F. 2' A.G.L.

KB. _____
DF. _____
GL. N/A

| | |
|-------------------------|---------------------|
| DATE | <u>29 JUNE 1964</u> |
| RUN NO. | <u>1</u> |
| TYPE LOG | <u>CORR. G/R</u> |
| DEPTH-DRILLER | <u>1960'</u> |
| DEPTH-LOGGER | <u>N/R</u> |
| BOTTOM LOGGED INTERVAL | <u>1850'</u> |
| TOP LOGGED INTERVAL | <u>1450'</u> |
| TYPE FLUID IN HOLE | <u>WTR</u> |
| SALINITY PPM CL. | <u>N/A</u> |
| DENSITY LB./GAL. | <u>N/A</u> |
| LEVEL | <u>FULL</u> |
| MAX. REC. TEMP.-DEG. F. | <u>N/A</u> |
| OPR. RIG TIME | <u>4 HOURS</u> |
| RECORDED BY | <u>MULLINS</u> |
| WITNESSED BY | <u>JARYIS</u> |
| LOCATION | <u>STA #7</u> |

DRILLING LOG

| RUN NO. | BORE HOLE RECORD | | | CASING RECORD | | |
|---------|------------------|-------------|-----------|---------------|------|----------|
| | BIT | FROM | TO | SIZE | WGT. | FROM |
| | <u>8"</u> | <u>936'</u> | <u>TD</u> | | | <u>0</u> |
| | | | | | | |
| | | | | | | |
| | | | | | | |

Walton District, Roane County, W. Va.

By Louis F. Payn Oil Co. (f)

Contractor, Joshua Davis.

Elevation, 1098' L.

Drilling commenced Nov. 4, 1908; completed Dec. 16, 1908.

Shot Dec. 16, 1908, with 40 qts., at 2133-58'; May 27, 1913, with 60 qts., at 2125-2155'; Jan. 8, 1924, with 40 qts., at 2130-2150'.

1-14-24. 5" casing on O.M.S. disc wall packer at 2041' (pipe).

13" casing, 16'; 10", 520'; 8", 936'; 6", 1993' (left in).

Barrel and perforation lowered Sept. 7, 1925.

Record in Eastern Petroleum Co. Well Record book of Clifton Oil & Gas Co.

20A-1102-A ?

| | Top. | Bottom. |
|-------------------------------------|------|---------|
| Native coal and slate | 1090 | - 1100 |
| Little Burkard Sand | 890 | - 920 |
| Big Burkard Sand | 925 | - 1020 |
| First Salt Sand (water, 1570-1660') | 1530 | - |
| Little Line | 1944 | - |
| Big Line | 1990 | - |
| Big Injun Sand (oil, 2133-2161') | 2133 | - 2161 |
| Total depth | | 2161 |

WELL RECORD

87-31102
or
87-1102A

PRODUCTION FIRST 24
HOURS FROM

Sand

Bibs. Approved.

Sand

Bibs. By

Supt.

C. C. Hendley

FARM No. OF LEASE

No. ACRES

W. H. Lane

DISTRICT *Pittman*

COUNTY *W. Va.*

STATE

WELL No. *41*

DATE OF LOCATION

19.....

RIG COMMENCED 19.....
RIG COMPLETED 19.....
DRILLING COMMENCED *November 7th* 19. *08*.....
DRILLING COMPLETED *December 16th* 19. *08*.....

Joshua Davis CONTRACTOR
..... CONTRACTOR

CASING RECORD

| Size | CHARGED TO WELL | | PUT IN WELL | | BOTTOM OF CASING | | PULLED OUT OF WELL | | LEFT IN WELL | | TRANSFERRED Before Completion | | LEFT AT WELL NOT IN USE | |
|--------------|-----------------|-----|-------------|-----|------------------|-----|--------------------|-----|--------------|-----|-------------------------------|-----|-------------------------|-----|
| | Feet | In. | Feet | In. | Feet | In. | Feet | In. | Feet | In. | Feet | In. | Feet | In. |
| <i>13</i> | | | <i>16</i> | | | | | | | | | | | |
| <i>11</i> | | | <i>520</i> | | | | | | | | | | | |
| <i>8 1/4</i> | | | <i>936</i> | | | | | | | | | | | |
| <i>6 5/8</i> | | | <i>1993</i> | | | | | | <i>1993</i> | | | | | |
| <i>5 1/2</i> | | | <i>2011</i> | | | | | | <i>2011</i> | | | | | |

| Formation | Top | Bottom | Remarks |
|---------------------|-------------|-------------|-------------------------------------|
| Conductor | | | |
| Native Coal & Slate | <i>1090</i> | <i>1100</i> | |
| Pittsburgh Coal | | | |
| Little Dunkard Sand | <i>890</i> | <i>920</i> | |
| Big Dunkard Sand | <i>945</i> | <i>1020</i> | |
| First Salt Sand | <i>1530</i> | | |
| Second Salt Sand | | | |
| Water | <i>1570</i> | <i>1660</i> | |
| Maxon Sand | | | |
| Little Lime | <i>1944</i> | | |
| Pencil Cave | | | |
| Big Lime | <i>1990</i> | | |
| Big Injun Sand | <i>2133</i> | <i>2161</i> | <i>26 1/14/24</i> |
| Gas | | | <i>5-3/4" casing on 2150' level</i> |
| First Pay | | | <i>well packed at 2041' ft</i> |
| Second Pay | | | |
| Water | | | |
| Squaw Sand | | | |
| Gantz Sand | | | |
| Fifty Foot Sand | | | |
| Thirty Foot Sand | | | |
| Gordon Stray Sand | | | |
| Gordon Sand | | | |
| Gas | | | |
| First Pay | | | |
| Second Pay | | | |
| Fourth Sand | | | |
| Fifth Sand | | | |
| Gas | | | |
| Oil | <i>2133</i> | <i>2161</i> | |
| Bayard Sand | | | |
| Total Depth | | <i>2161</i> | |

ABANDONED 19.....

Size Casing Pulled Casing Left In

2161
1990

REMARKS