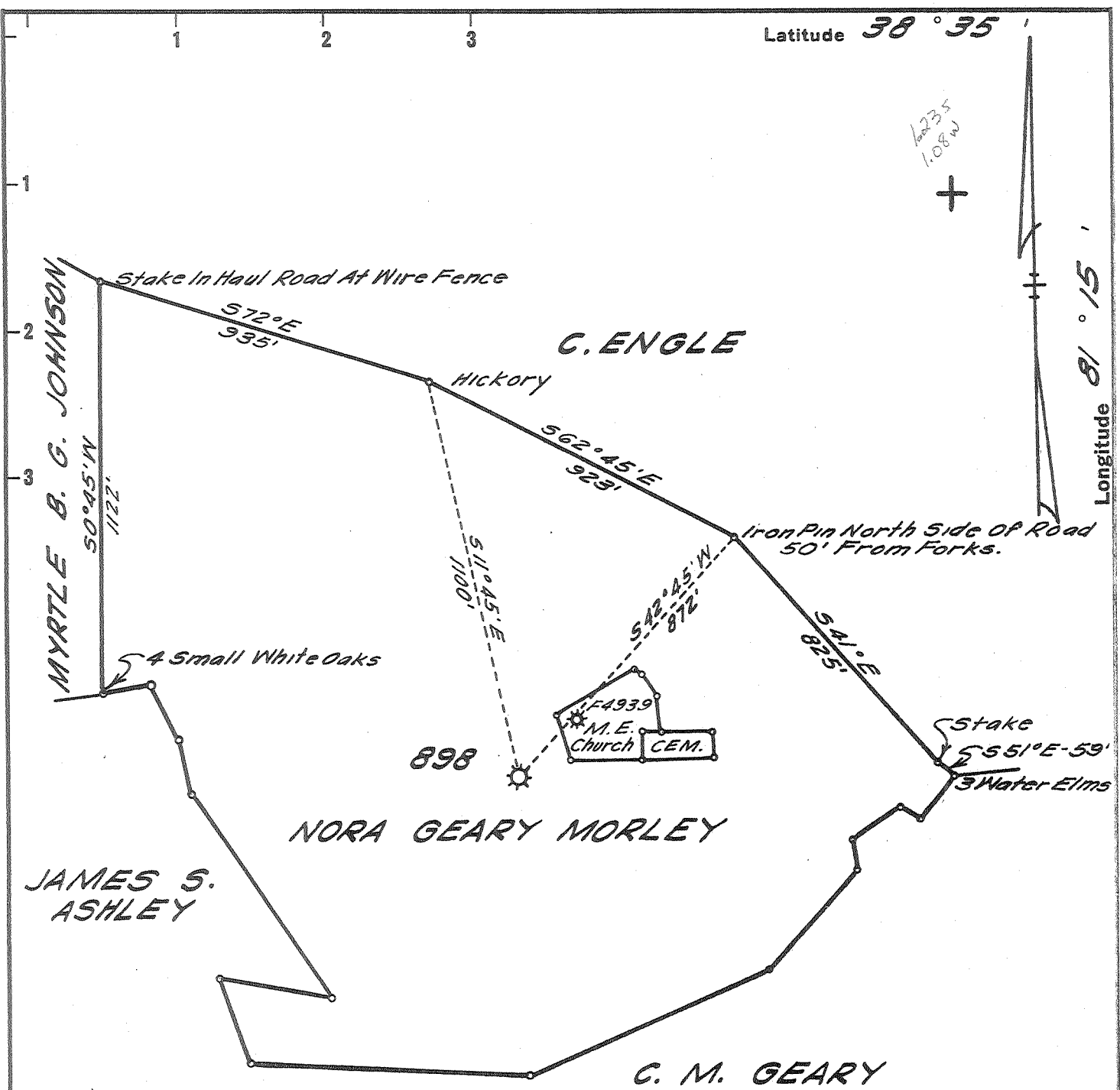


Latitude 38° 35'

Longitude 81° 15'



BENCH MARK DESCRIPTION

Copper Disk in Concrete Monument, Stamped 225 SKS,  
2' From Power Pole N<sup>8</sup> 6/151, 2' From Concrete Building, 50'  
From Road Intersection At Amma Post Office. Elev. 714.00'

DEGREE OF ACCURACY

One Part in Two Hundred.

New Location

Drill Deeper

Abandonment

*yan*

*Seybert R. Jewell*

Company UNITED FUEL GAS CO.

Address CHARLESTON, W.VA.

Farm J. M. GEARY

Tract \_\_\_\_\_ Acres 300 Lease No. 2290

Well (Farm) No. 2 Serial No. 898

Elevation (Spirit Level) 852.84'

Quadrangle WALTON - SE

County ROANE District GEARY

Engineer Seybert R. Jewell

Engineer's Registration No. 2529 W.VA.

File No. 80-73 Drawing No. \_\_\_\_\_

Date APRIL 17, '64 Scale 1" = 400'

STATE OF WEST VIRGINIA  
DEPARTMENT OF MINES  
OIL AND GAS DIVISION  
CHARLESTON

see Microfilm for Well Record  
**WELL LOCATION MAP**  
FILE NO. Rod-1109-A

+ Denotes location of well on United States Topographic Maps, scale 1 to 62,500, latitude and longitude lines being represented by border lines as shown.

- Denotes one inch spaces on border line of original tracing.