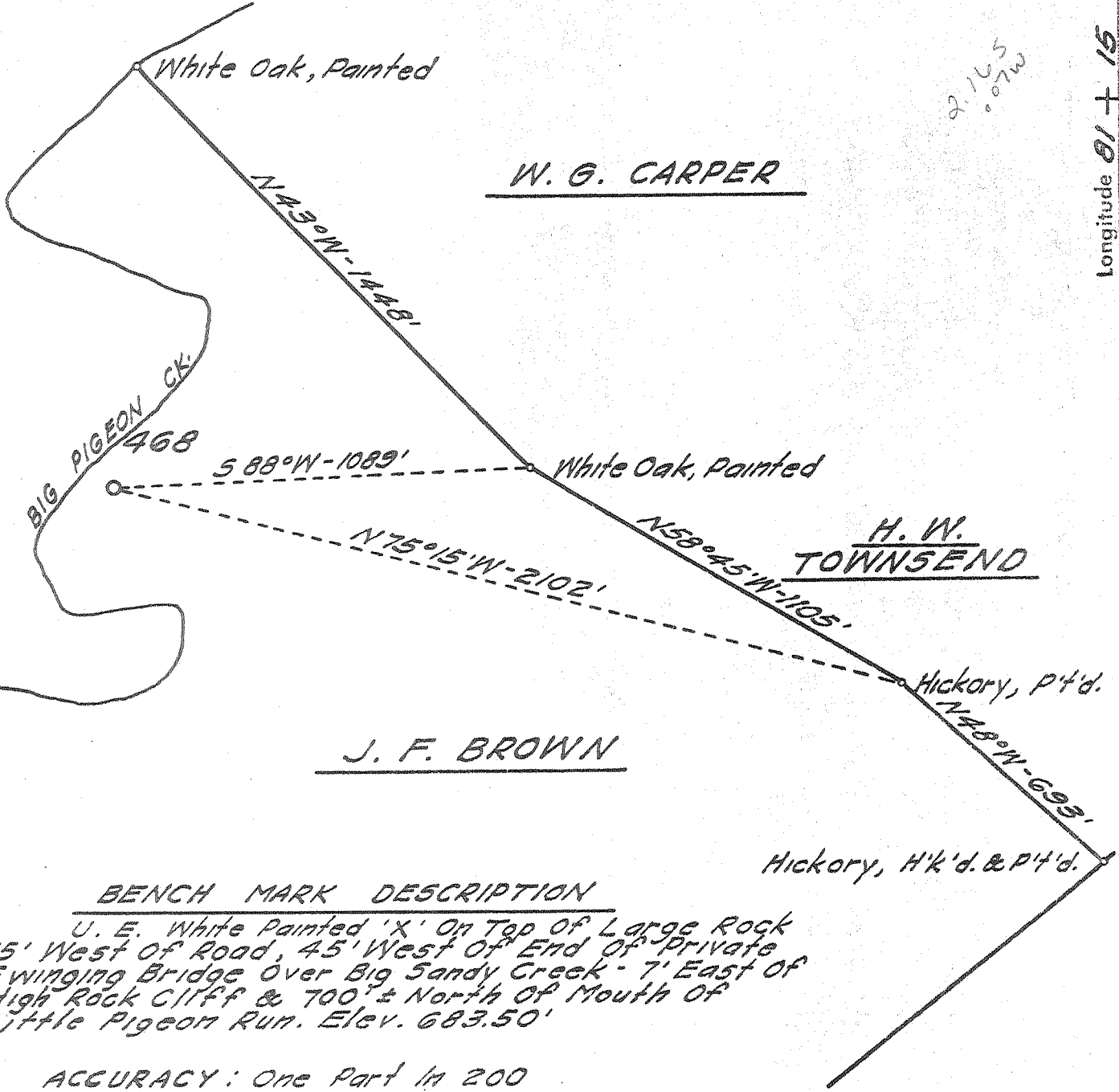


Latitude 38° 35'

Longitude 81° 15'

2.165
0.07W



BENCH MARK DESCRIPTION

U. E. White Painted 'X' On Top of Large Rock 15' West of Road, 45' West of End of Private Swinging Bridge Over Big Sandy Creek - 7' East of High Rock Cliff & 700'± North of Mouth of Little Pigeon Run. Elev. 683.50'

ACCURACY: One Part in 200

- Fracture
- Before 6/5/29
- New Location
- Drill Deeper
- Redrill
- Abandonment
- Issued 10/8/70

I, the undersigned, hereby certify that this map is correct to the best of my knowledge and belief and shows all the information required by Paragraph 5 of the Rules and Regulations of the Oil and Gas Section of the Mining Laws of West Virginia.
The accuracy of this survey is within the limits and as prescribed in Paragraph 5 by the Oil and Gas Division of the Department of Mines Regulations.

Company UNITED FUEL GAS CO.
 Address CHARLESTON, W. VA.
 Farm J. F. BROWN
 Tract _____ Acres 250 Lease No. 2254
 Well (Farm) No. _____ Serial No. 468
 Elevation (Spirit Level) 682.68'
 Quadrangle WALTON SE
 County ROANE District GEARY
 Engineer William E. Friedman
 Engineer's Registration No. 2330
 File No. 73-82 Drawing No. _____
 Date OCT. 2, '70 Scale 1" = 400'

STATE OF WEST VIRGINIA
 DEPARTMENT OF MINES
 OIL AND GAS DIVISION
 CHARLESTON
see microfilm for well record
WELL LOCATION MAP
 FILE NO. Roa-1154-A

+ Denotes location of well on United States Topographic Maps, scale 1 to 62,500 latitude and longitude lines being represented by border lines as shown.
 — Denotes one inch spaces on border line of original tracing.